



Design Proposals for Consultation

PBN implementation for Cotswold Kemble

Date: MAY 2020

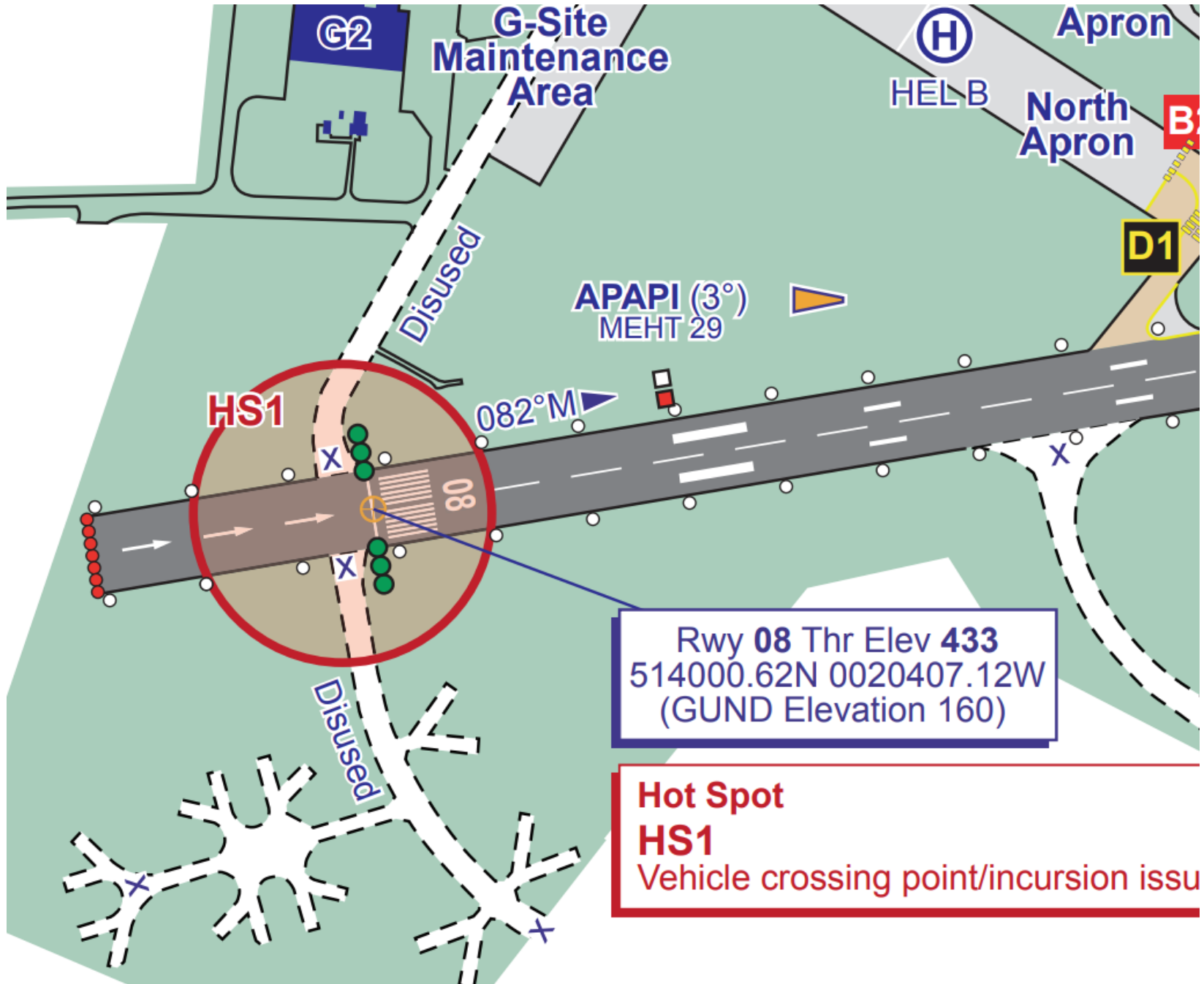
Designs main features

RWY 08

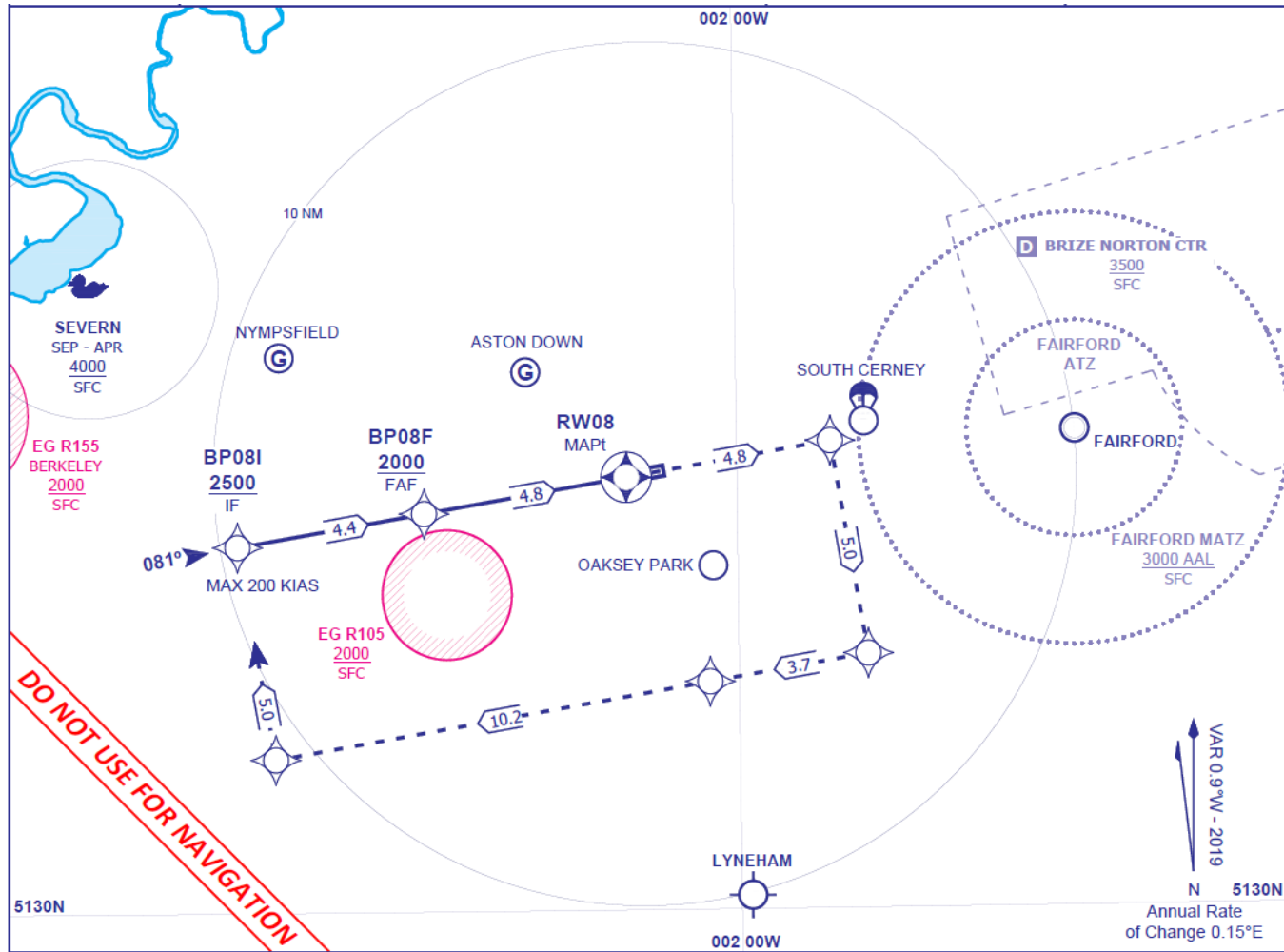
- Standard design parameters
- Straight-in approach
- Closed Missed approach back to IAF

RWY 26

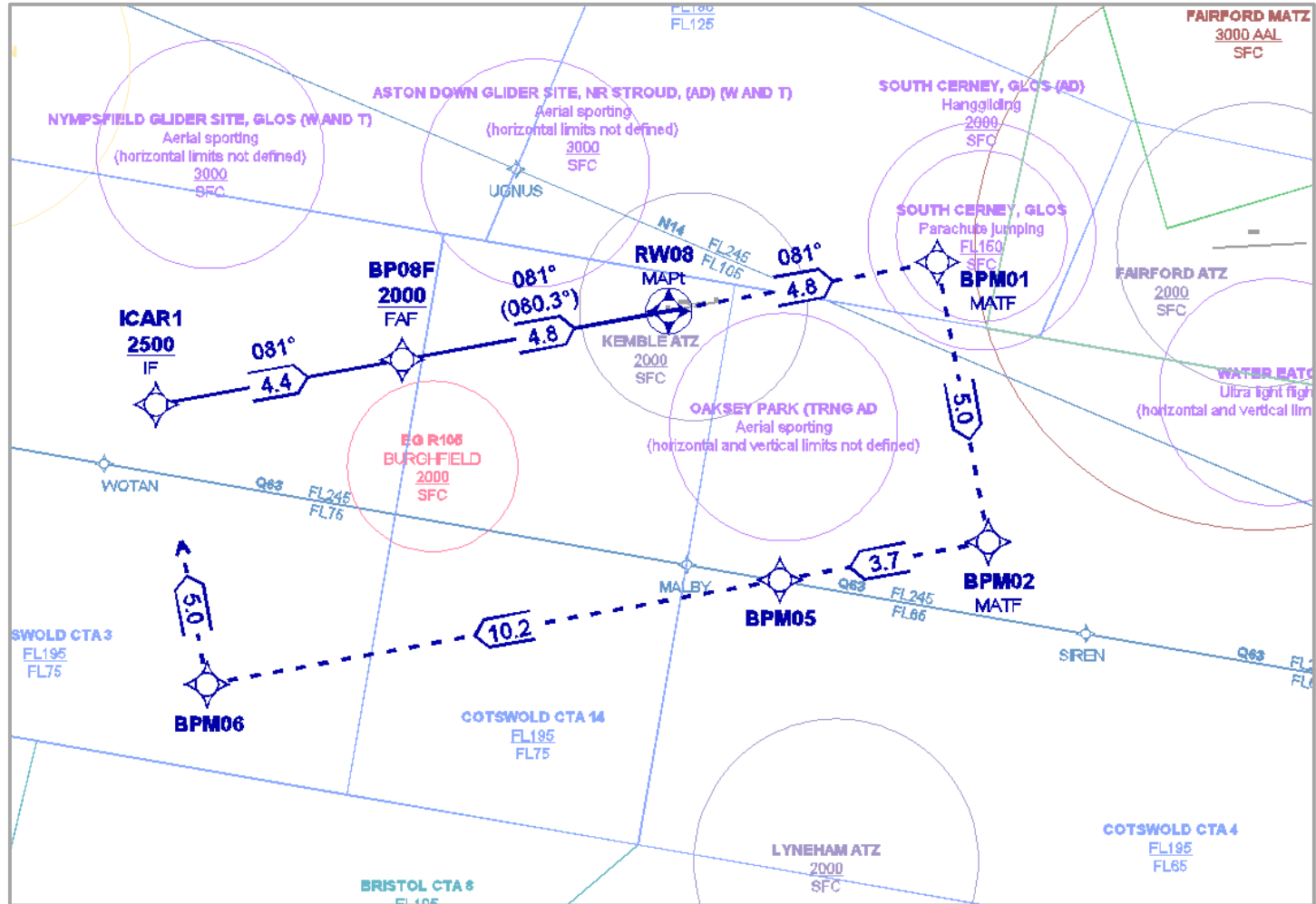
- Standard design parameters
- Two options considered:
 - a) Straight-in approach
 - b) T-bar approach
- Closed Missed approach back to IAF / South IAF



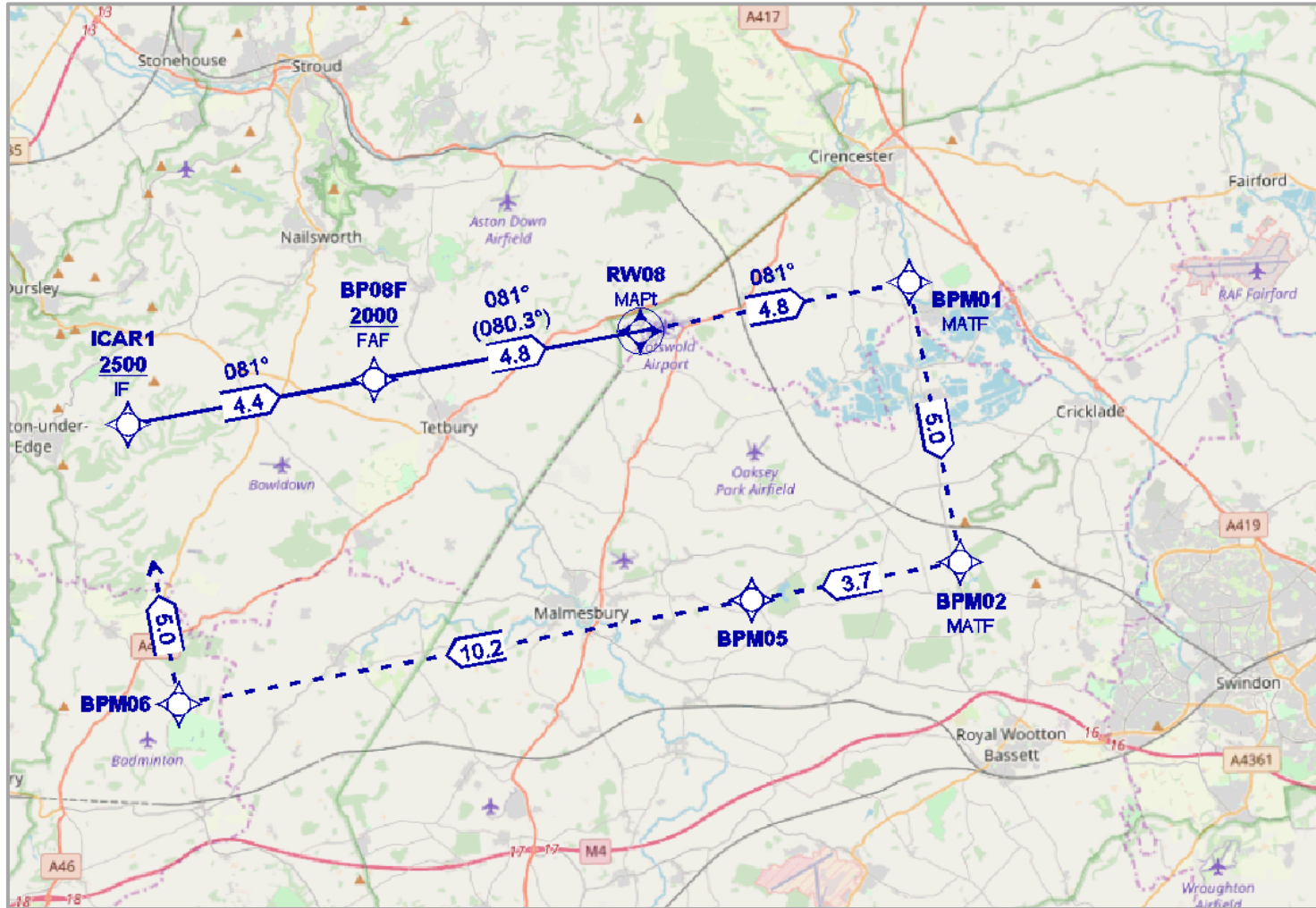
Straight-in Approach



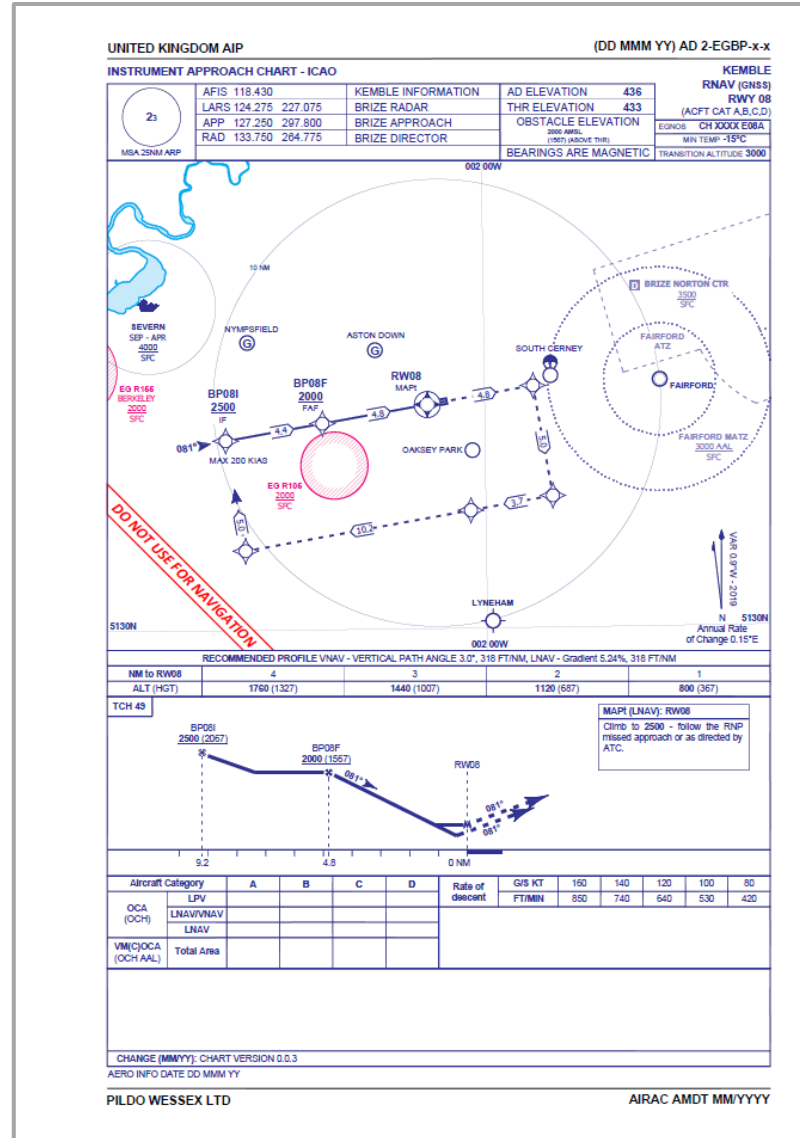
Straight-in Approach over Airspace

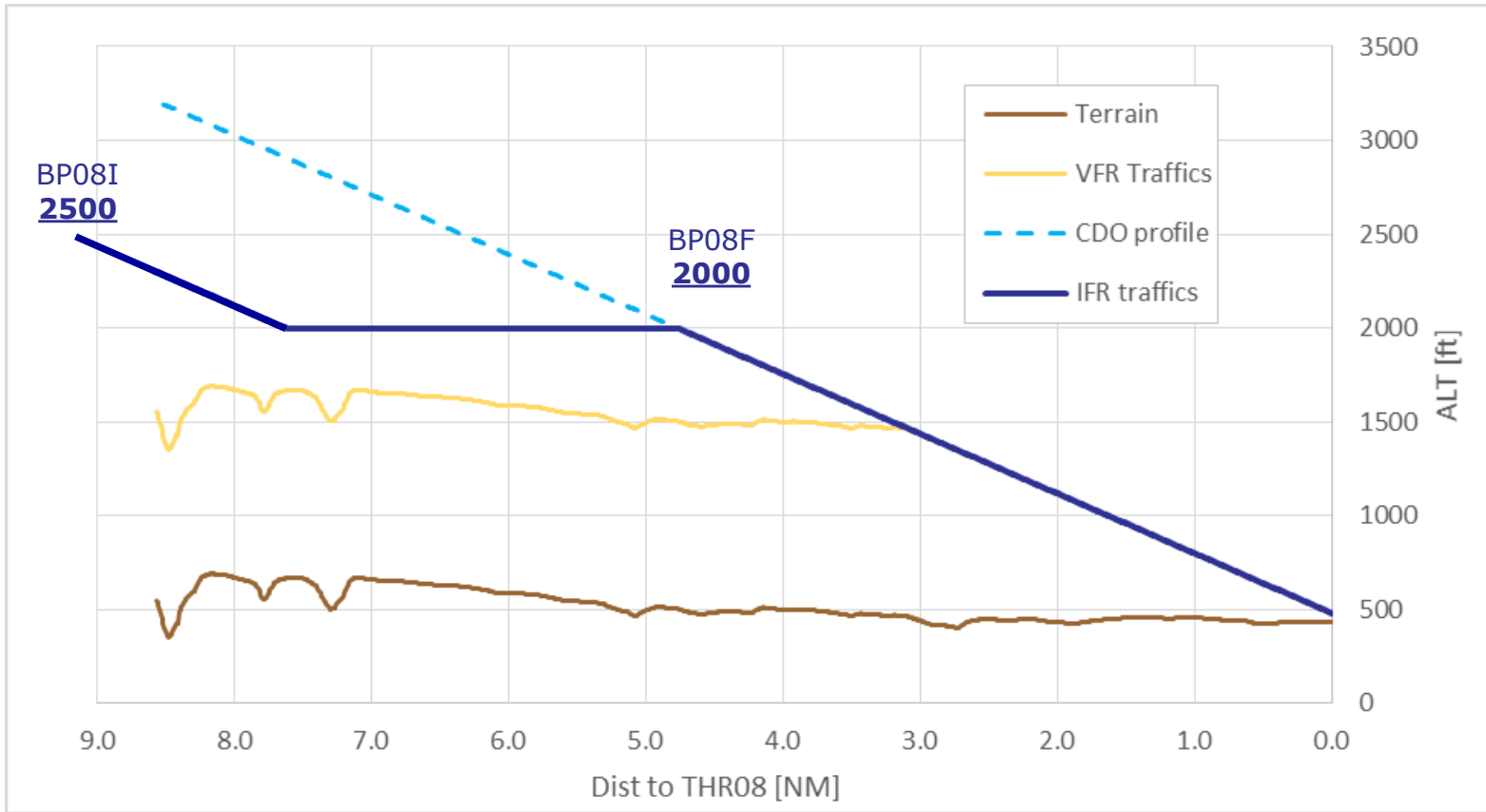
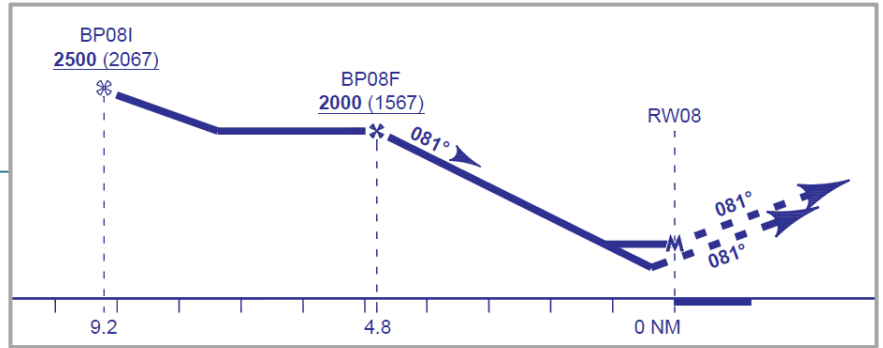


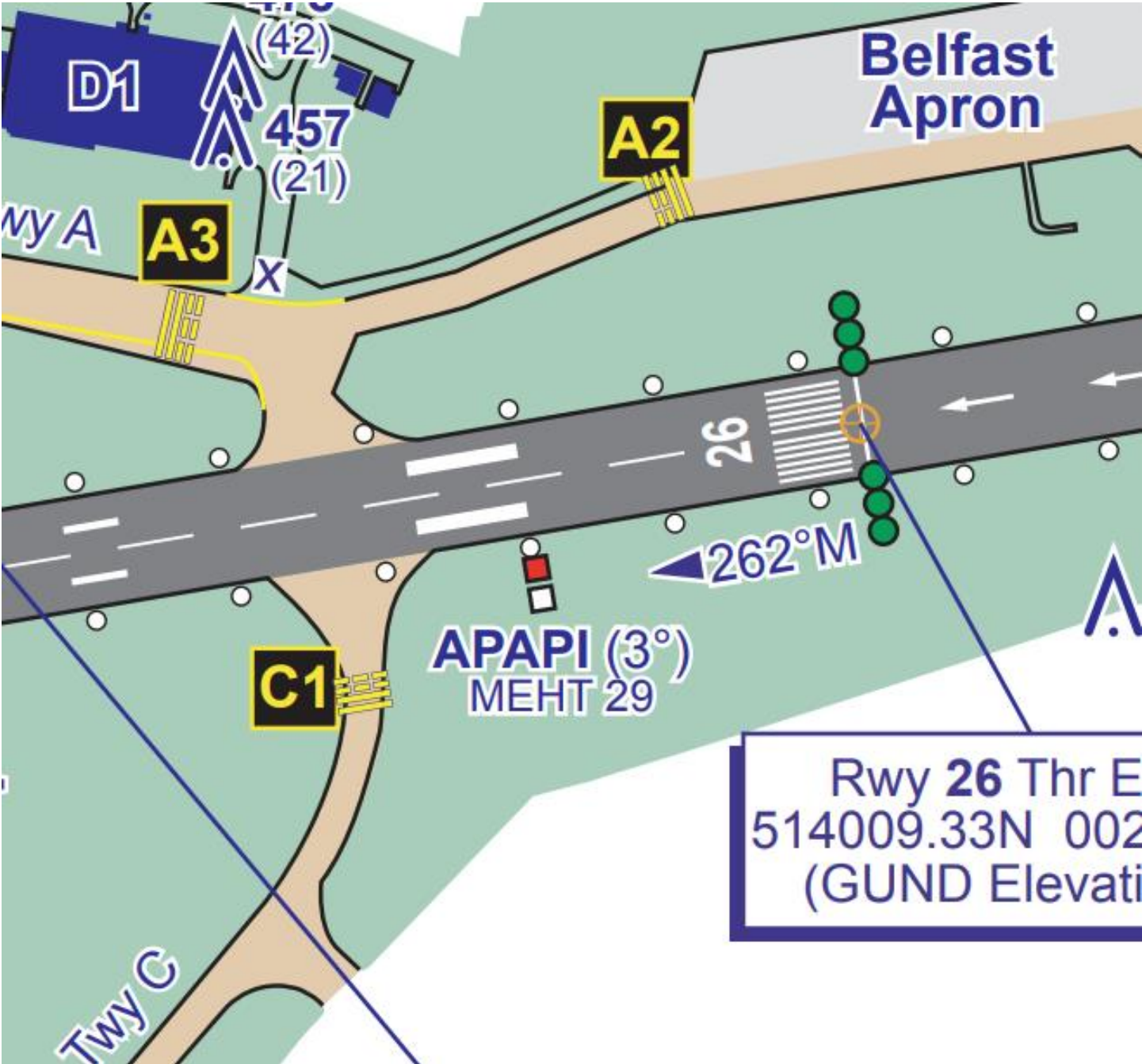
Straight-in Approach over Map



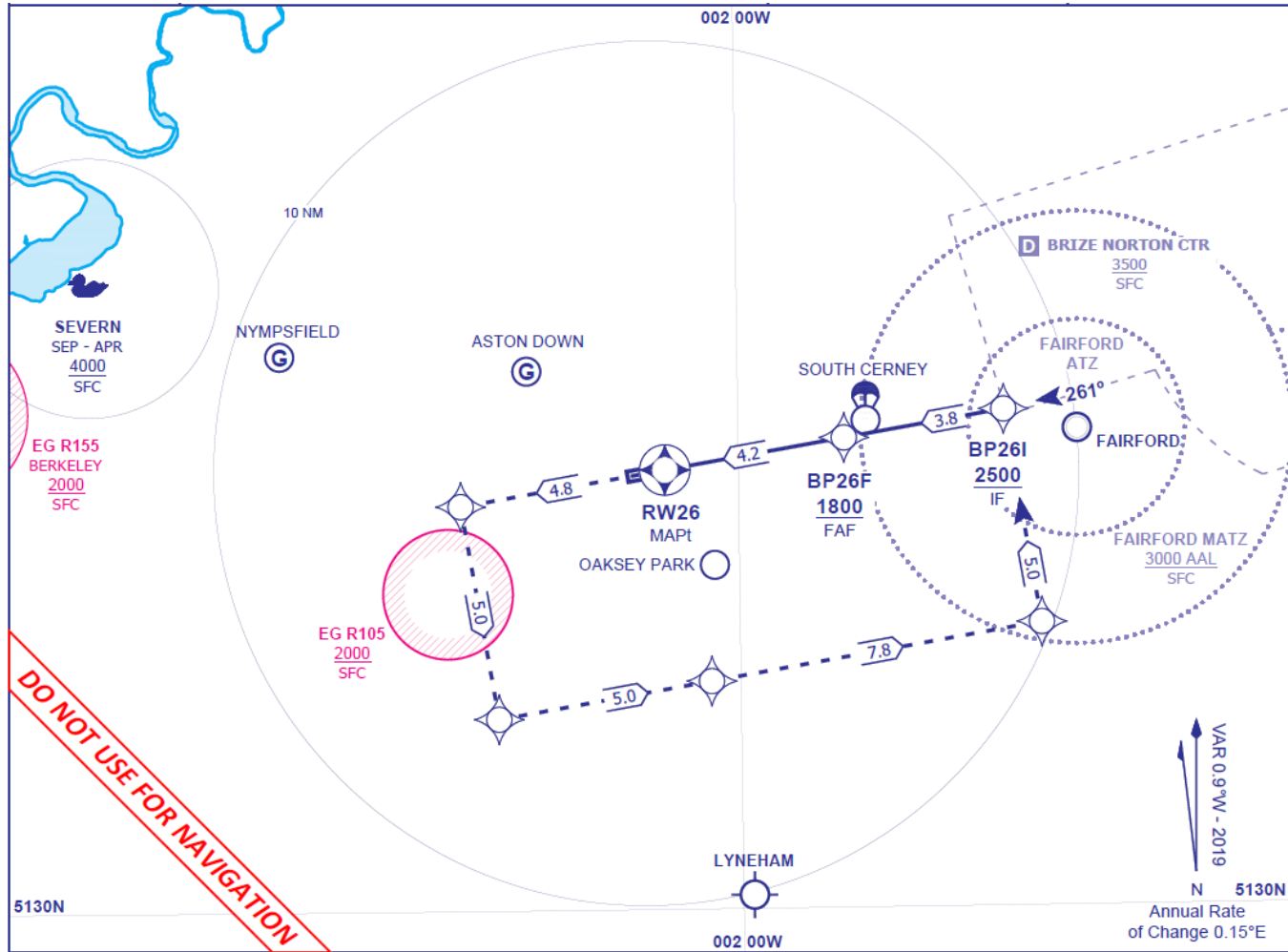
Straight-in Approach Proposed Chart



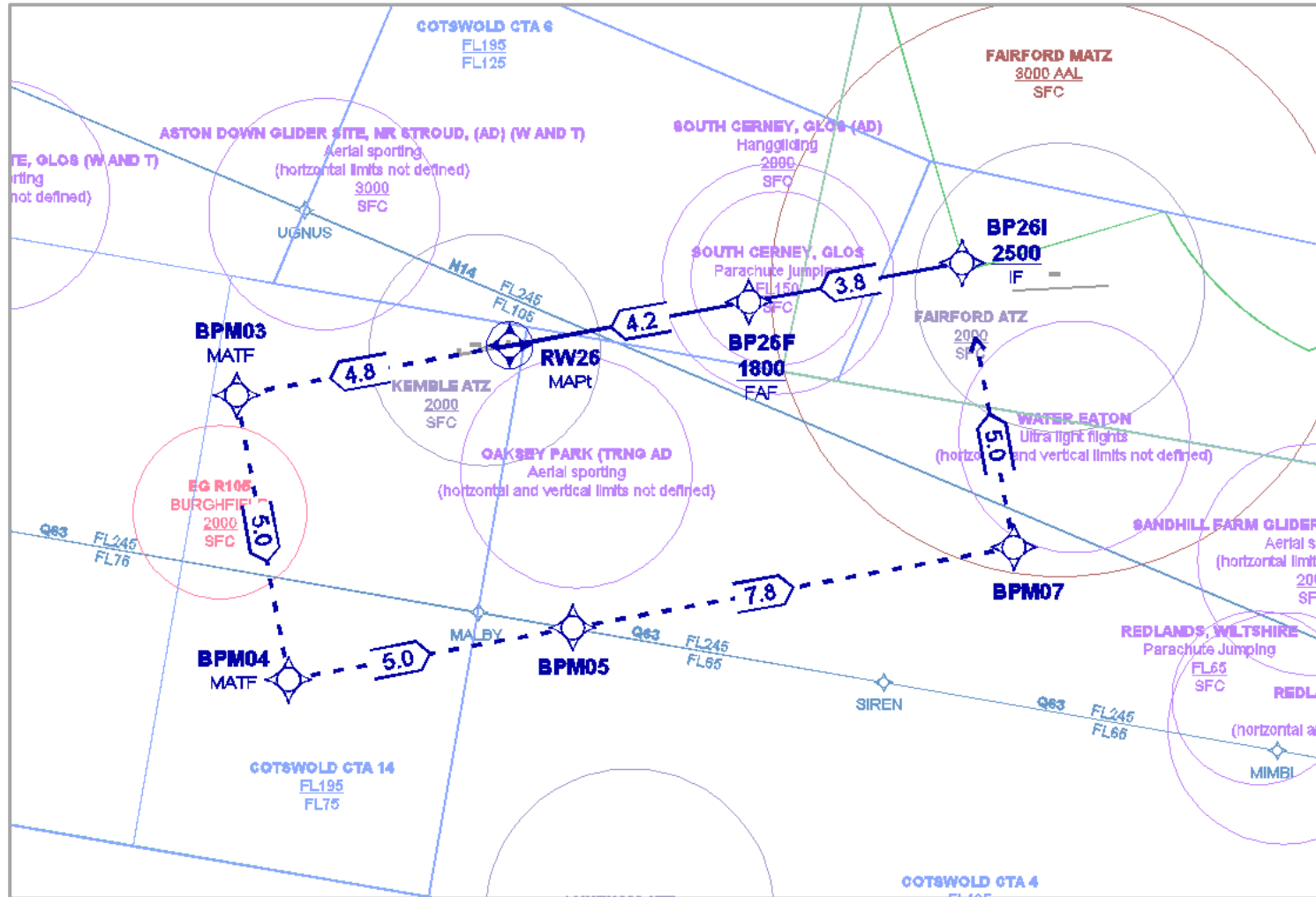




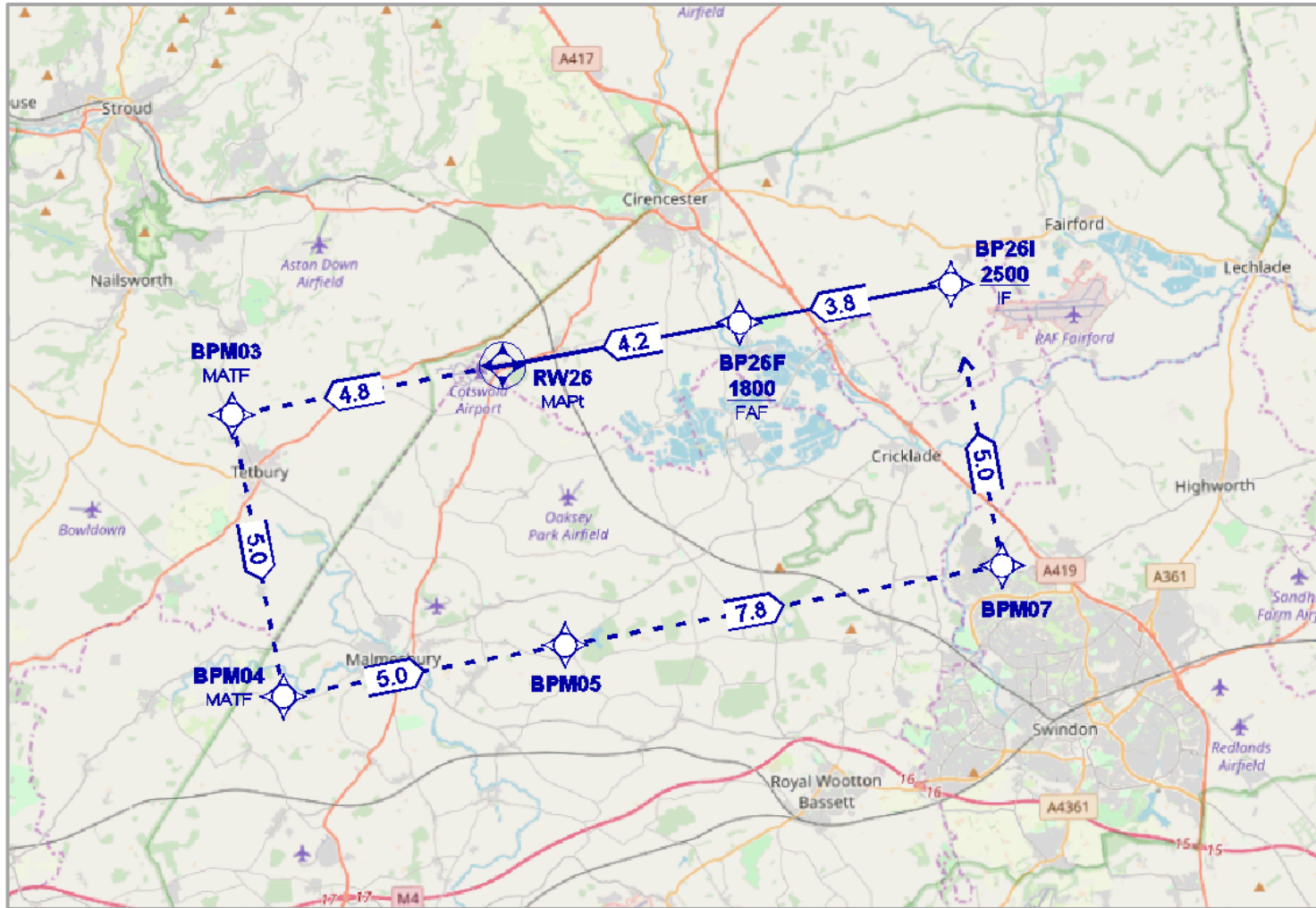
Straight-in Approach



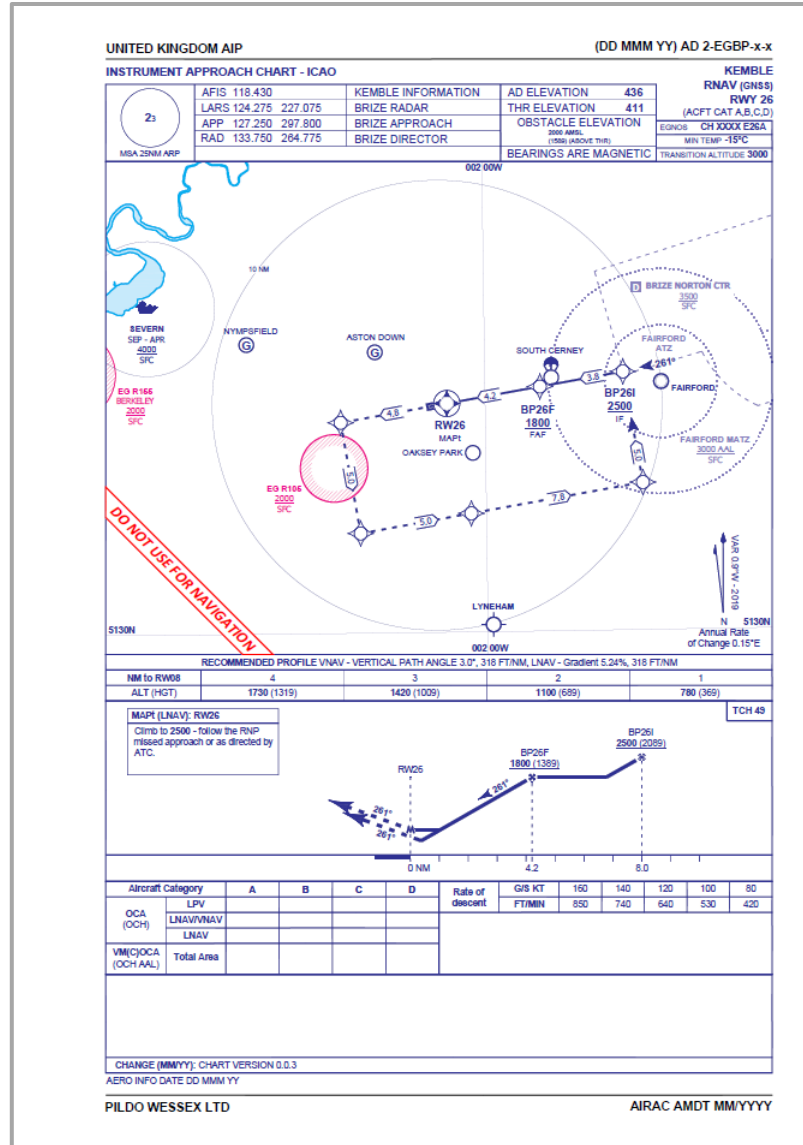
Straight-in Approach over Airspace



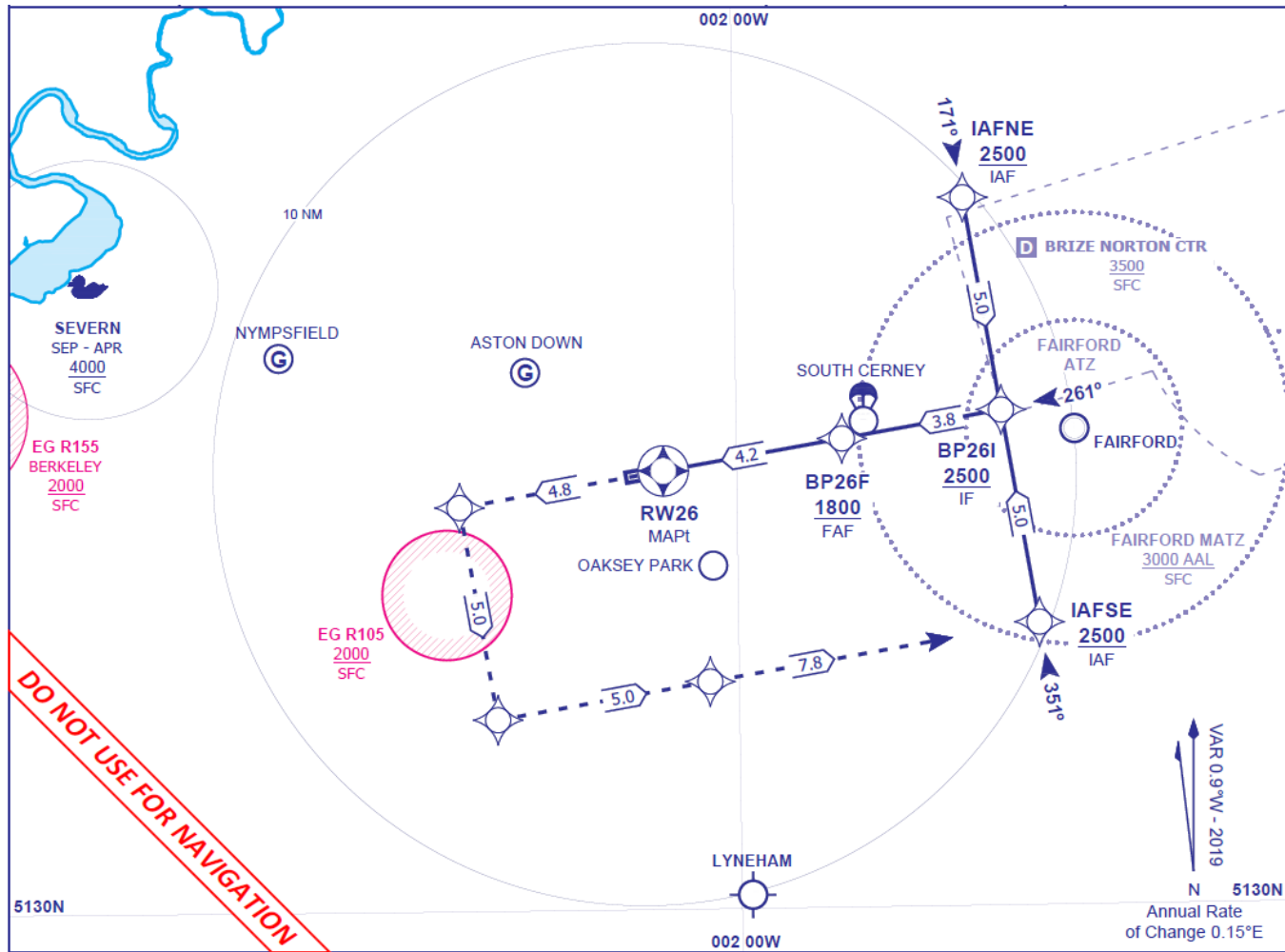
Straight-in Approach over Map



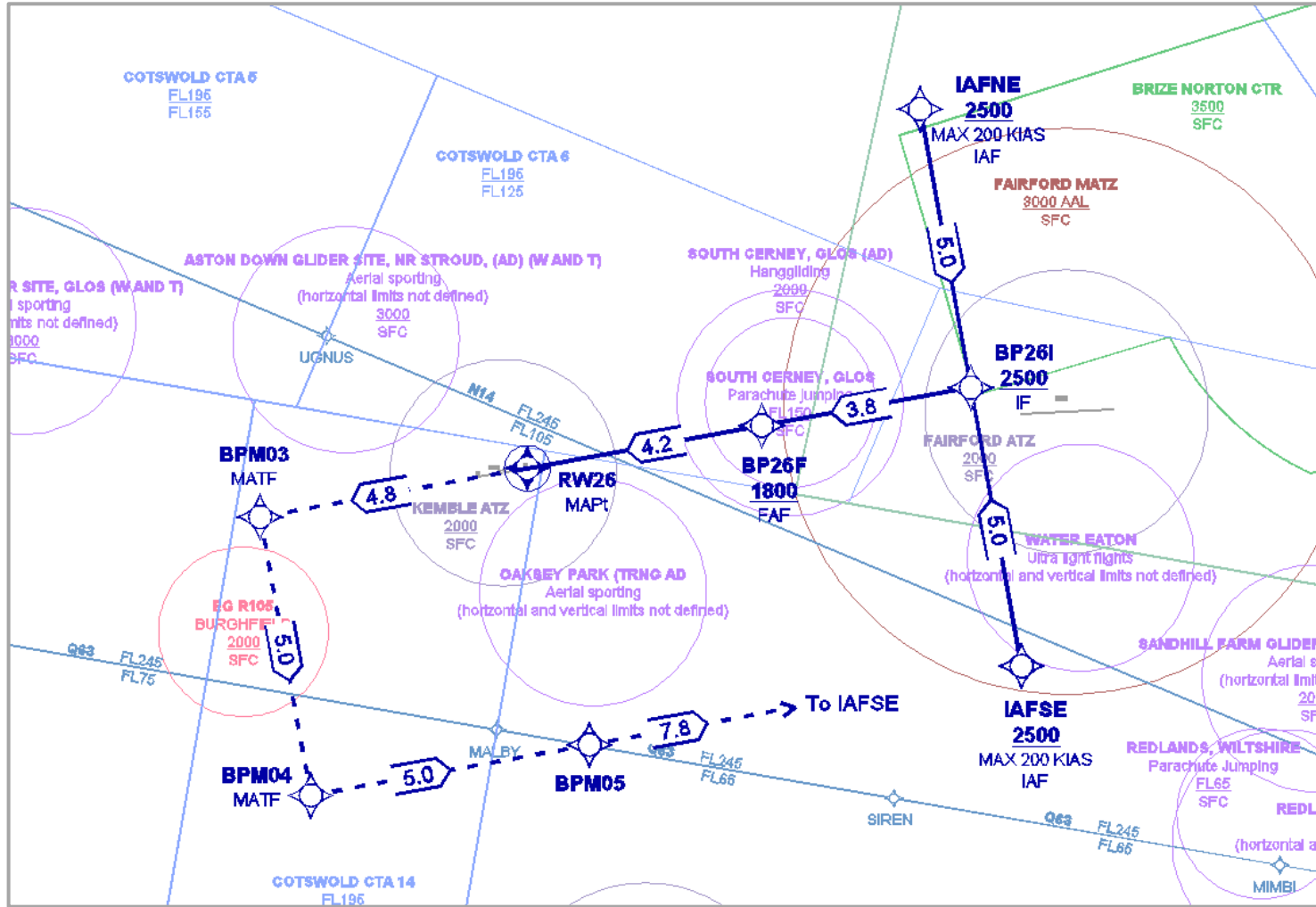
Straight-in Approach Proposed Chart



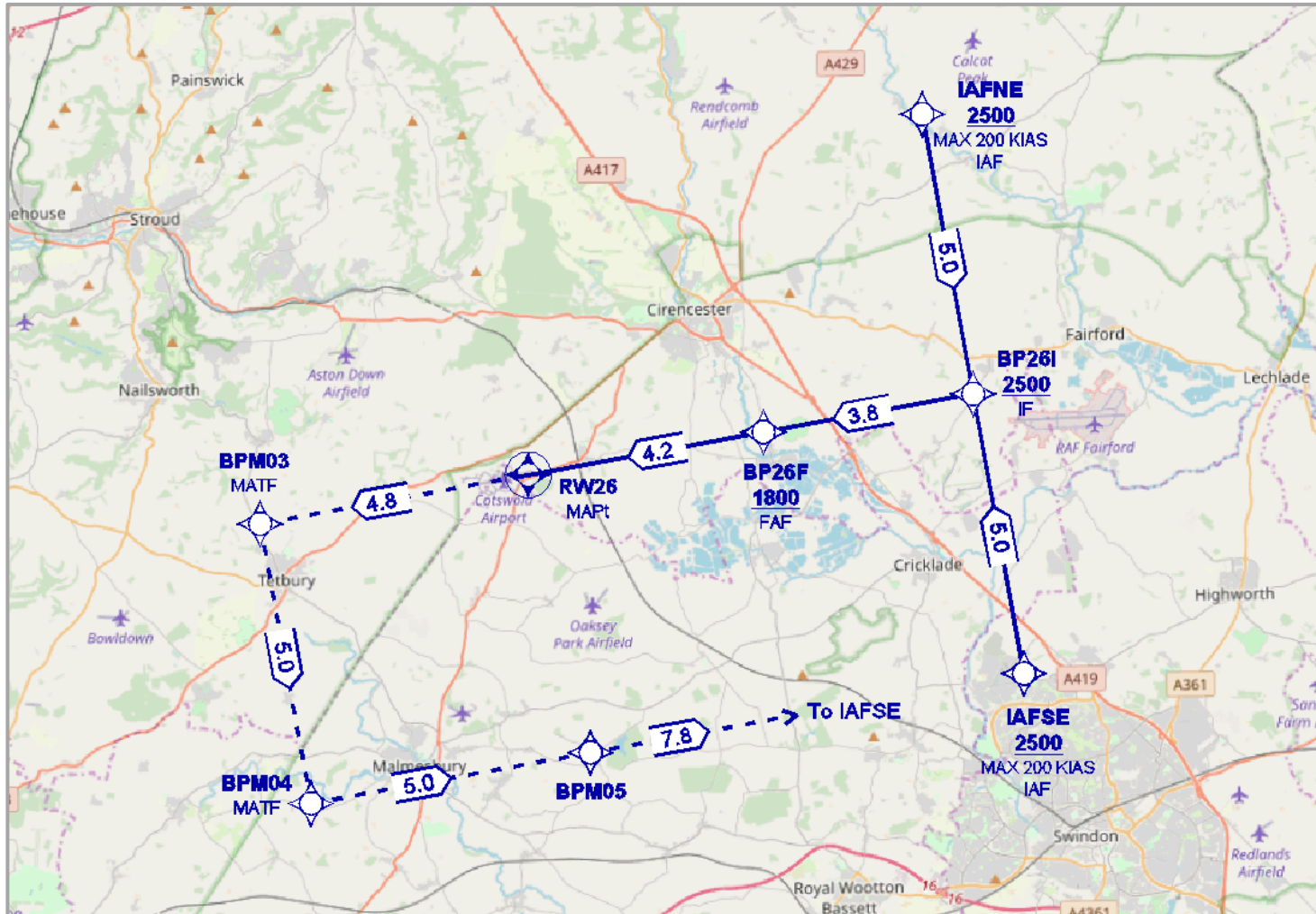
T-bar Approach



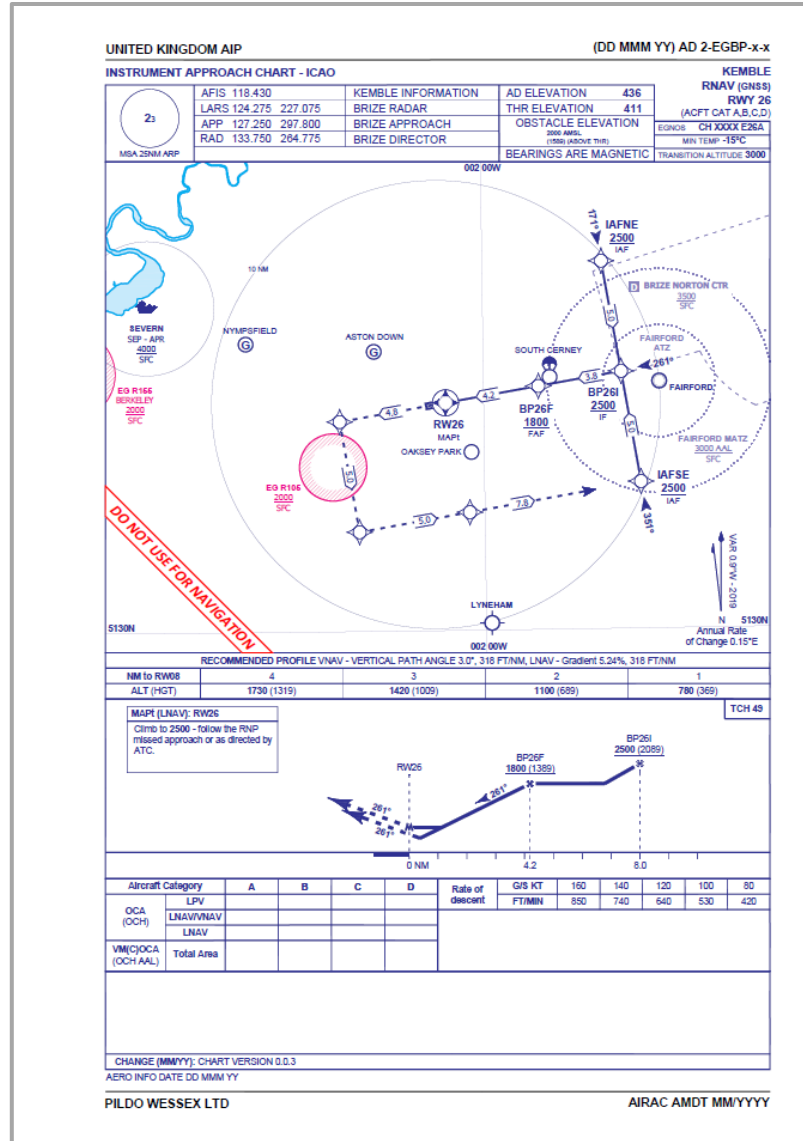
T-bar Approach over Airspace



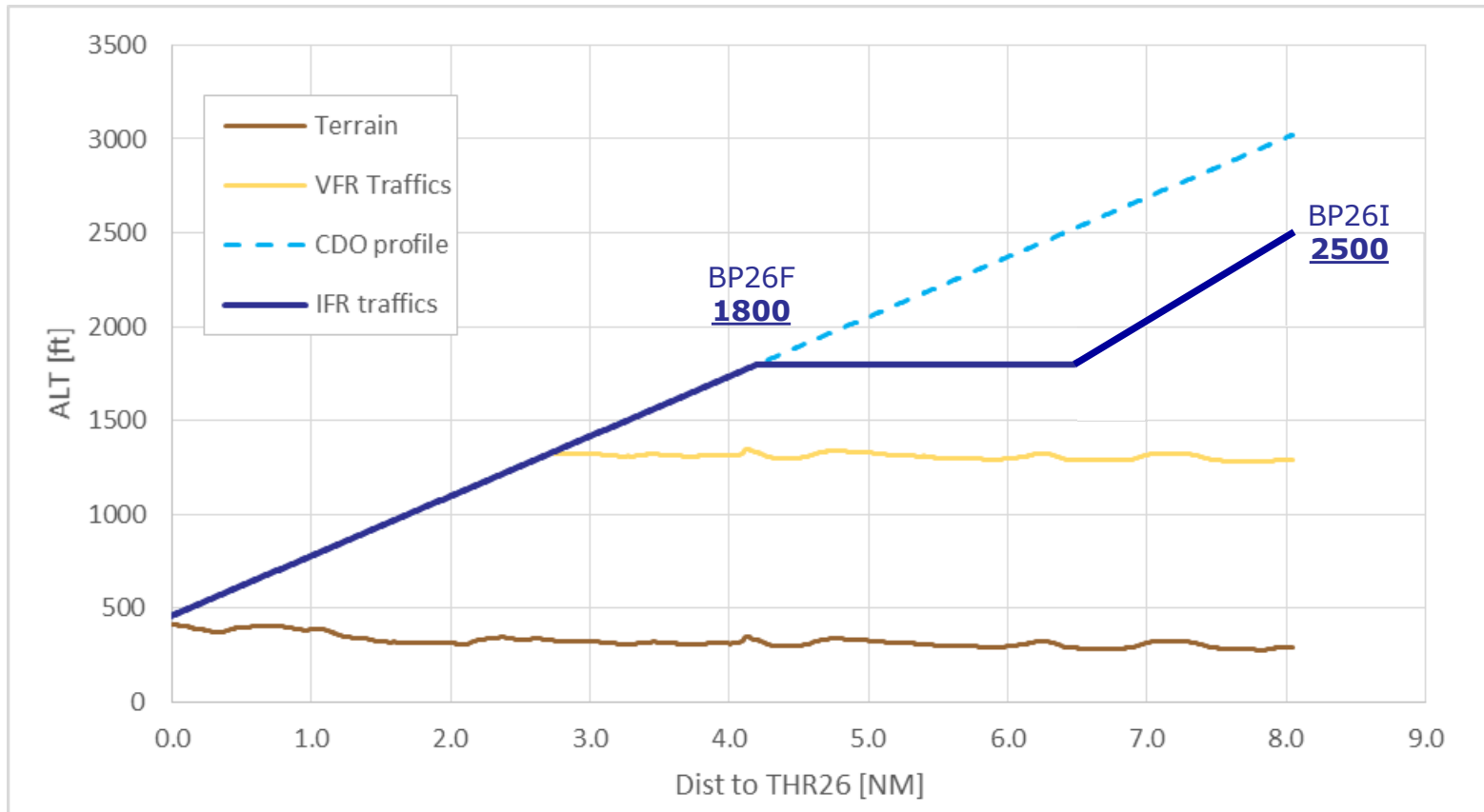
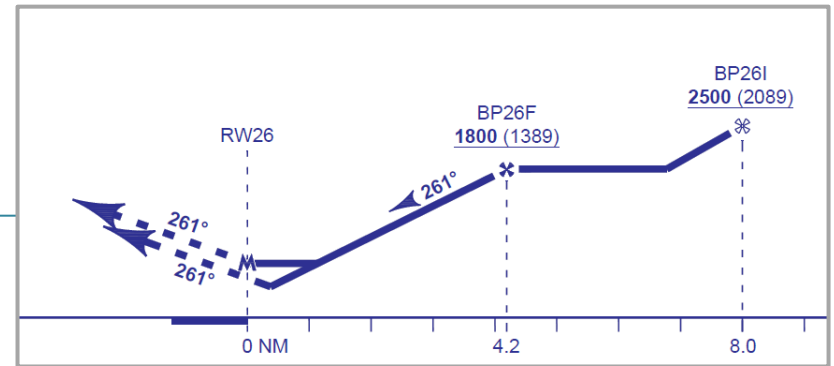
T-bar Approach over Map



T-bar Approach Proposed Chart



Profile View





Pildo Labs Wessex Ltd - 38 Middlehill Road.
Colehill. Wimborne. Dorset. BH21 2SE
Registered No. 08931907
CIF/VAT:195 5738 57 tel: 0787
www.pildo.com