

EGBP — KEMBLE

EGBP AD 2.1 AERODROME LOCATION INDICATOR AND NAME

EGBP — KEMBLE

EGBP AD 2.2 AERODROME GEOGRAPHICAL AND ADMINISTRATIVE DATA

1	ARP coordinates and site at AD	Lat: 514005N Long: 0020325W Mid-point of Runway 08/26
2	Direction and distance from city	4.5 NM SW of Cirencester.
3	Elevation / Reference temperature	436 FT / 19 °C
4	Geoid undulation at AD ELEV PSN	160 FT
5	Magnetic Variation / Annual Change	0.85°W (2019) / 0.15°E
6	AD Administration Address Telephone Telefax E-mail address Web address	KEMBLE AIR SERVICES LIMITED The Control Tower, Kemble Airfield, Cirencester, Gloucestershire GL7 6BA. 01285-771177 (Kemble Ops) 01285-771318 ops@cotswoldairport.com http://www.cotswoldairport.com
7	Type of Traffic permitted (IFR/VFR)	IFR/VFR
8	Remarks	GA Agreement aerodrome. Refer to GEN 1.2 for notification requirements. Designated aerodrome for Special Branch purposes.

EGBP AD 2.3 OPERATIONAL HOURS

1	AD Administration	0900-1700 (0800-1600); Out of hours movements/night flying by arrangement
2	Customs and immigration	By arrangement. Minimum notice periods apply.
3	Health and sanitation	
4	AIS Briefing Office	As AD hours, in Operations Department. Self briefing.
5	ATS Reporting Office (ARO)	
6	MET Briefing Office	As AD hours, in Operations Department. Self briefing.
7	ATS	As AD hours. See also AD 2.18.
8	Fuelling	Last uplift 15 minutes before aerodrome closes; and by arrangement.
9	Handling	As AD hours and by arrangement.
10	Security	
11	De-icing	
12	Remarks	This aerodrome is strictly PPR by telephone at all times. The visual circuit and ATZ will be closed when the IAP is active, No PPR slot will be available in this period. AD may close during adverse weather conditions including snow.

EGBP AD 2.4 HANDLING SERVICES AND FACILITIES

1	Cargo handling facilities	By Arrangement.
2	Fuel and oil types	AVTUR JET A1 (F35), AVGAS 100LL W80, W100, 80, 100, 15W50
3	Fuelling facilities/capacity	AVGAS 100LL fuel installation 40,000ltrs is self service (pay at pump). Mobile bowser 8,000ltrs. Jet fuel static 55,000ltrs, Jet A1 bowser 18,000ltrs
4	De-icing facilities	
5	Hangar space for visiting aircraft	Limited.
6	Repair facilities for visiting aircraft	Limited.
7	Remarks	Handling service contacts: Operations - Kemble Air Services Ltd. Tel: +44 (0)1285-771177 Email: ops@cotswoldairport.com

EGBP AD 2.5 PASSENGER FACILITIES

1	Hotels	Hotels in vicinity.
2	Restaurants	On aerodrome.
3	Transportation	Taxis and car hire available by pre-booking through handling agent. Nearest railway station: 1 mile.
4	Medical facilities	Limited first aid.
5	Bank and Post Office	Bank 5 miles. Post Office 1 mile.
6	Tourist Office	5 miles.
7	Remarks	Accommodation and transportation arrangements can be made via handling agent.

EGBP AD 2.6 RESCUE AND FIRE FIGHTING SERVICES

1	AD category for fire fighting services	RFF Category A2 Category 3 (under remission) available on request.
2	Rescue equipment	1 x TACR4 6x6 CAT 3 Foam Tender, 1 x DENNIS Fire Appliance
3	Capability for removal of disabled aircraft	In the event of an incident, light aircraft can be removed using airport resources. Large aircraft can be removed using outside sources in conjunction with aircraft operators.
4	Remarks	

EGBP AD 2.7 SEASONAL AVAILABILITY - CLEARING

INTENTIONALLY BLANK

EGBP AD 2.8 APRONS, TAXIWAYS AND CHECK LOCATIONS/POSITIONS DATA

1	Apron surface and strength	ALPHA/TOWER APRON Surface: Grass BELFAST/NORTH APRON Surface: Asphalt D SITE APRON Surface: Asphalt G SITE AREA Surface: Asphalt
2	Taxiway width, surface and strength	Taxiway A A3-A4: 23 M Surface: Macadam Taxiway A A4-A5: 15 M Surface: Macadam Taxiway A A5-H SITE: 10.5 M Surface: Macadam Taxiway A RWY-A2: 10.5 M Surface: Macadam Taxiway B RWY-NORTH APRN: 15 M Surface: Macadam Taxiway C RWY-RWY: 10.5 M Surface: Macadam Taxiway D D2-W/SIDE APRN: 10.5 M Surface: Macadam

		Taxiway D RWY-D2: 15 M Surface: Macadam
		Taxiway G G1-TWY D: 7.5 M Surface: Grass
3	Altimeter checkpoint location and elevation	
4	VOR checkpoints	
5	INS checkpoints	
6	Remarks	

EGBP AD 2.9 SURFACE MOVEMENT GUIDANCE AND CONTROL SYSTEM AND MARKINGS

1	Use of aircraft stand ID signs, TWY guide lines and visual docking/parking guidance system of aircraft stands	Stand 1, 2, 3 and 4 on D-site apron, have self-manoeuvring markings. Stands 1-3 are suitable for aircraft with a maximum wingspan of 28 m. Entrance to Stands 1-3 are via Taxiway G. Entrance to Stand 4 is via Taxiway A and is suitable for B737-800 and A321.
2	Runway and taxiway markings and lighting	Runway marking aid(s): 08/26: Runway designation, threshold and centre-line, touchdown zone and fixed distances. Runway width is designated by side stripe markings. Runway light(s): Runway edge and end of pavement lights. Amber guard lights at Alpha 3, Bravo 1 and Delta 1. Taxiway marking aid(s): Taxiways A, B, C, D have yellow centre-line and edge markings. Taxiway light(s): Illuminated Hold boards at Alpha 3, Bravo 1 and Delta 1.
3	Stop bars	
4	Remarks	Illuminated windsock abeam control tower, mid-point Runway 08/26. All Runway and taxiway marking are to EASA/ICAO standard not CAA.

EGBP AD 2.10 AERODROME OBSTACLES

In Approach/Take-off areas						
Obstacle ID/ Designation	Obstacle Type	Obstacle Position	Elevation/Height		Obstruction Lighting Type/ Colour	Remarks
1	2	3	4		5	6
(EGBP6760) 26/APPROACH 08/ TAKE-OFF	HANGAR	514013.42N 0020257.04W	472 FT		Yes Red	
(EGBP6605) 26/APPROACH 08/ TAKE-OFF	HANGAR	514012.69N 0020257.25W	457 FT		No	
(EGBP7160) 26/APPROACH 08/ TAKE-OFF	VEHICLE ON ROAD	514006.76N 0020238.67W	421 FT		No	
(EGBP7062) 26/APPROACH 08/ TAKE-OFF	TREE	514006.08N 0020224.30W	483 FT		No	
(EGBP6509) 08/APPROACH 26/ TAKE-OFF	MAST	514001.70N 0020450.99W	488 FT		No	
(EGBP6939) 08/APPROACH 26/ TAKE-OFF	TREE	514001.55N 0020431.74W	472 FT		No	
(EGBP6138) 08/APPROACH 26/ TAKE-OFF	TREE	514000.89N 0020513.63W	523 FT		No	

In circling area and at aerodrome						
Obstacle ID/ Designation	Obstacle Type	Obstacle Position	Elevation/Height		Obstruction Lighting Type/ Colour	Remarks
1	2	3	4		5	6
(EGBP4293)	TREE	514229.26N 0020605.04W	668 FT		No	
(EGBP4298)	TREE	514158.78N 0020504.45W	622 FT		No	
(EGBP6703)	AERIAL	514011.02N 0020326.45W	489 FT		No	

EGBP AD 2.11 METEOROLOGICAL INFORMATION PROVIDED

1	Associated MET Office	
2	Hours of service MET Office outside hour	
3	Office responsible for TAF preparation Periods of validity	
4	Trend forecast Interval of issuance	
5	Briefing/consultation provided	Self briefing/telephone through Kemble Operations Department.
6	Flight documentation Language(s) used	
7	Charts and other information available for briefing or consultation	Form 214/215/415 TAF/METAR AIRMET. Internet access.
8	Supplementary equipment available for providing information	
9	ATS units provided with information	
10	Additional information (limitation of service, etc.)	Unofficial observations made during AD hours.

EGBP AD 2.12 RUNWAY PHYSICAL CHARACTERISTICS

Designations RWY Number	True bearing	Dimensions of RWY	Surface of RWY/ SWY/ Strength (PCN)	THR co-ordinates/ THR Geoid undulation	THR elevation/ Highest elevation of TDZ of precision APP RWY	Slope of RWY/ SWY
1	2	3	4	5	6	7
08	080.41°	1973 x 45 M	RWY surface: Asphalt PCN 29/F/C/W/T	514000.60N 0020407.12W 160 FT	THR 433 FT	
26	260.43°	1973 x 45 M	RWY surface: Asphalt PCN 29/F/C/W/T	514009.33N 0020243.97W 160 FT	THR 411 FT	
08G	080.37°	561 x 18 M	RWY surface: Grass	514006.96N 0020334.09W 160 FT	THR 434 FT	
26G	260.37°	561 x 18 M	RWY surface: Grass	514010.00N 0020305.28W 160 FT	THR 428 FT	

SWY Dimensions	Clearway Dimensions	Strip Dimensions	RESA Dimensions, Overshoot / Undershoot	Location/ description of arresting system	OFZ	Remarks
8	9	10	11	12	13	14
		1917 x 150 M				RWY 08 Threshold displaced by 170 M. The longitudinal slope for Runway 08/26 exceeds the 1.5% maximum slope for 95 M starting from the threshold of Runway 26. The local slope is 1.66% up. Elevated Aerodrome Ground Lighting mounted on white edge markings, 1 M in from runway physical edge. OFZ: Yes.
		1917 x 150 M				RWY 26 Threshold displaced by 183 M. The longitudinal slope for Runway 08/26 exceeds the 1.5% maximum slope for 95 M starting from the threshold of Runway 26. The local slope is 1.66% up. Elevated Aerodrome Ground Lighting mounted on white edge markings, 1 M in from runway physical edge. OFZ: Yes.
		621 x 30 M				RWY 08G
		621 x 30 M				RWY 26G

EGBP AD 2.13 DECLARED DISTANCES

Runway designator	TORA	TODA	ASDA	LDA	Remarks
1	2	3	4	5	6
08	1758 M	1758 M	1798 M	1778 M	
26	1799 M	1799 M	1799 M	1640 M	
08	1149 M	1149 M	1189 M		Take-off from intersection of Taxiway D.
08	975 M	975 M	1015 M		Take-off from intersection of Taxiway B.
26	1410 M	1410 M	1410 M		Take-off from intersection of Taxiway A.
26	637 M	637 M	637 M		Take-off from intersection of Taxiway B.
08G	561 M	561 M	561 M	561 M	
26G	561 M	561 M	561 M	561 M	

EGBP AD 2.14 APPROACH AND RUNWAY LIGHTING

RWY	Approach lighting Type/ Length/ Intensity	Threshold lighting Colour/Wing bars	VASIS/ MEHT/ PAPI/ PAPI Dist from THR	TDZ, lighting Length	Runway Centre Line lighting Length/ Spacing/ Colour/ Intensity	Runway edge lighting Length/ Spacing/ Colour/ Intensity	Runway end lighting Colour/ Wing bars	Stopway lighting Length/ Colour	Remarks
1	2	3	4	5	6	7	8	9	10
08		Light intensity high Elevated green wingbars	APAPI Left/3° 32 FT 184 M			Elevated bi-directional 60 M spacing White Light intensity high	Red		
26		Light intensity high Elevated green wingbars	APAPI Left/3° 24 FT 138 M			Elevated bi-directional 60 M spacing White Light intensity high	Red		

EGBP AD 2.15 OTHER LIGHTING, SECONDARY POWER SUPPLY

1	ABN/IBN location, characteristics and hours of operation	ABN: 514011.02N 0020326.45W Flashing White, mounted on the roof of the tower. As required when AD is open.
2	LDI location and lighting Anemometer location and lighting	
3	TWY edge and centre line lighting	EDGE: Elevated blue edge lights on Taxiway B and North Apron. Blue reflective markers on Taxiway D, from Taxiway B to Woodside apron.
4	Secondary power supply/switch-over time	
5	Remarks	

EGBP AD 2.16 HELICOPTER LANDING AREA

1	Coordinates TLOF or THR of FATO, geoid undulation	
2	TLOF and/or FATO elevation	
3	TLOF and FATO area dimensions, surface, strength, marking, lighting	
4	True BRG of FATO	
5	Declared distance available	
6	APP and FATO lighting	
7	RMK	Helipad A located on Stand 1 (D-site apron). Helipad B located on North Apron.

EGBP AD 2.17 AIR TRAFFIC SERVICES AIRSPACE

Designation and lateral limits	Vertical Limits	Airspace Class	ATS unit callsign/ language	Transition Altitude	Hours of applicability	Remarks
1	2	3	4	5	6	7
KEMBLE ATZ A circle, 2 NM radius, centred at 514005N 0020325W on longest notified runway (08/26)	Upper limit: 2000 FT Lower limit: SFC	G	KEMBLE INFORMATION English	3000 FT		

EGBP AD 2.18 AIR TRAFFIC SERVICES COMMUNICATION FACILITIES

Service Designation	Callsign	Channel(s)	SATVOICE number(s)	Logon Address	Hours of Operation	Remarks
1	2	3	4	5	6	7
AFIS	KEMBLE INFORMATION	118.430 MHz DOC 25 NM/ FL40.			0900-1700 (0800-1600); and by arrangement.	ATZ hours H24.

EGBP AD 2.19 RADIO NAVIGATION AND LANDING AIDS**INTENTIONALLY BLANK****EGBP AD 2.20 LOCAL AERODROME REGULATIONS****1 AIRPORT REGULATIONS**

- Special procedures are in force for some flying events, details as published by AIC and NOTAM.
- Non-Radio aircraft not accepted.
- While airside each aircraft commander is responsible for the safety of his passengers and other crew members. Passengers are at all times to be escorted by the aircraft commander or crew member who is known to be competent to ensure his/her and the passengers safety. The wearing of high visibility clothing is mandatory.
- Aircraft commanders or crew members, as applicable, are responsible for ensuring that a total ban on smoking whilst airside is observed.
- Aerodrome is not available when closed/out of published hours, to aircraft without a valid out of hours indemnity form.

2 GROUND MOVEMENT

- Vehicles cross the runway at 08 threshold under traffic light control during aerodrome operating hours.
- Taxiway Alpha between A1-A2 and Taxiway Charlie may be closed at any time. Essential aerodrome information will be provided by Kemble AFIS.

3 CAT II/III OPERATIONS

Not applicable

4 WARNINGS

- Be aware of proximity of Aston Down gliding centre 4 nm NW, winch launching to 3000 ft agl. Avoid South Cerney to the east, it is regularly active up to FL 120 with para dropping.
- High performance aircraft occasionally carry out non-standard manoeuvres.
- Windshear or turbulence may be experienced on final approach to Runway 26 in strong southerly or north westerly winds.
- Grass areas, including grass runway 08/26 and golf taxiway, are subject to restricted use or closure due to waterlogging and subsequent soak away, during and following periods of wet weather.
- During moderate/heavy rain, standing water forms at the runway edge on the start of Taxiway Delta. This may take up to 48 hours to drain.
- Model flying operates from the south west corner of the aerodrome, position *513948.10N 0020349.60W, up to 200 ft and occasionally up to 400 ft, during daylight hours up to 2000.

5 HELICOPTER OPERATIONS

- All rotary traffic to call for engine/rotor start.
- Helicopters may operate south of Runway 08/26 (asphalt) for training up to 700 ft aal, inside the fixed wing circuit.

6 USE OF RUNWAYS

Not applicable.

7 TRAINING

- All circuit training strictly PPR.
- Display practices must be booked in advance.

EGBP AD 2.21 NOISE ABATEMENT PROCEDURES

- a) Pilots should avoid overflying the villages and hamlets of Kemble, Kemble Wick, Rodmarton, Culkerton, Ashley and Chelworth, wherever possible.
- b) Contact Kemble Operations for detailed noise abatement procedures.

EGBP AD 2.22 FLIGHT PROCEDURES

1 CIRCUITS

- a) Circuit Heights: Jet circuit 1500 ft aal. Fixed-wing 1000 ft aal.
- b) The standard circuit patterns are Right hand Runway 08 and Left hand on Runway 26.
- c) All fixed wing GA traffic to join overhead.

2 IFR DEPARTURES JOINING AIRWAYS

- a) Aircraft departing Kemble IFR to the east should plan to join controlled airspace at MALBY.

Note: SIREN, MIMBI, KENET and CPT flight plans can all expect a MALBY join.

- b) Aircraft departing Kemble IFR to the west should plan to join controlled airspace at MALBY or BRECON (BCN).

Note: WOTAN, ALVIN and BADIM can also be used.

- c) Aircraft departing Kemble IFR to the north east should plan to join controlled airspace at either DAVENTRY (DTY) or HONILEY (HON).
- d) Aircraft departing Kemble IFR to the north west should plan to join controlled airspace at NITON or BRECON (BCN).

3 INSTRUMENT APPROACH PROCEDURES

- a) IAPs at Kemble are established outside CAS.
- b) There maybe other airspace activity not known to Kemble within RAF Brize Norton's CAS and within Class G in VMC and IMC
- c) All IAPs must have a pre-booked approach time slot from Kemble AFIS/Ops on 01285 771177
- d) All IAP slot timings must be adhered to maintain separation
- e) For a northern leg IAF join (ICAR3), a CAS zone transit is required from RAF Brize Norton ATC on 119.000

EGBP AD 2.23 ADDITIONAL INFORMATION

Not applicable

EGBP AD 2.24 CHARTS RELATED TO AN AERODROME

AERODROME CHART - ICAO

AD 2.EGBP-2-1

AIRCRAFT PARKING/DOCKING CHART - ICAO

AD 2.EGBP-2-2

INSTRUMENT APPROACH CHART RNP ARCH RWY 08R (CAT A TO D) - ICAO

AD 2.EGBP-8-1

INSTRUMENT APPROACH CHART RNP ARCH RWY 26L (CAT A TO D) - ICAO

AD 2.EGBP-8-2

INSTRUMENT APPROACH PROCEDURE CODING TABLES RNP ARCH RWY 08R

AD 2.EGBP-8-3

INSTRUMENT APPROACH PROCEDURE CODING TABLES RNP ARCH RWY 26L

AD 2.EGBP-8-4

**AERODROME
CHART - ICAO**

ARP 514005N 0020325W

AD ELEV 436FT

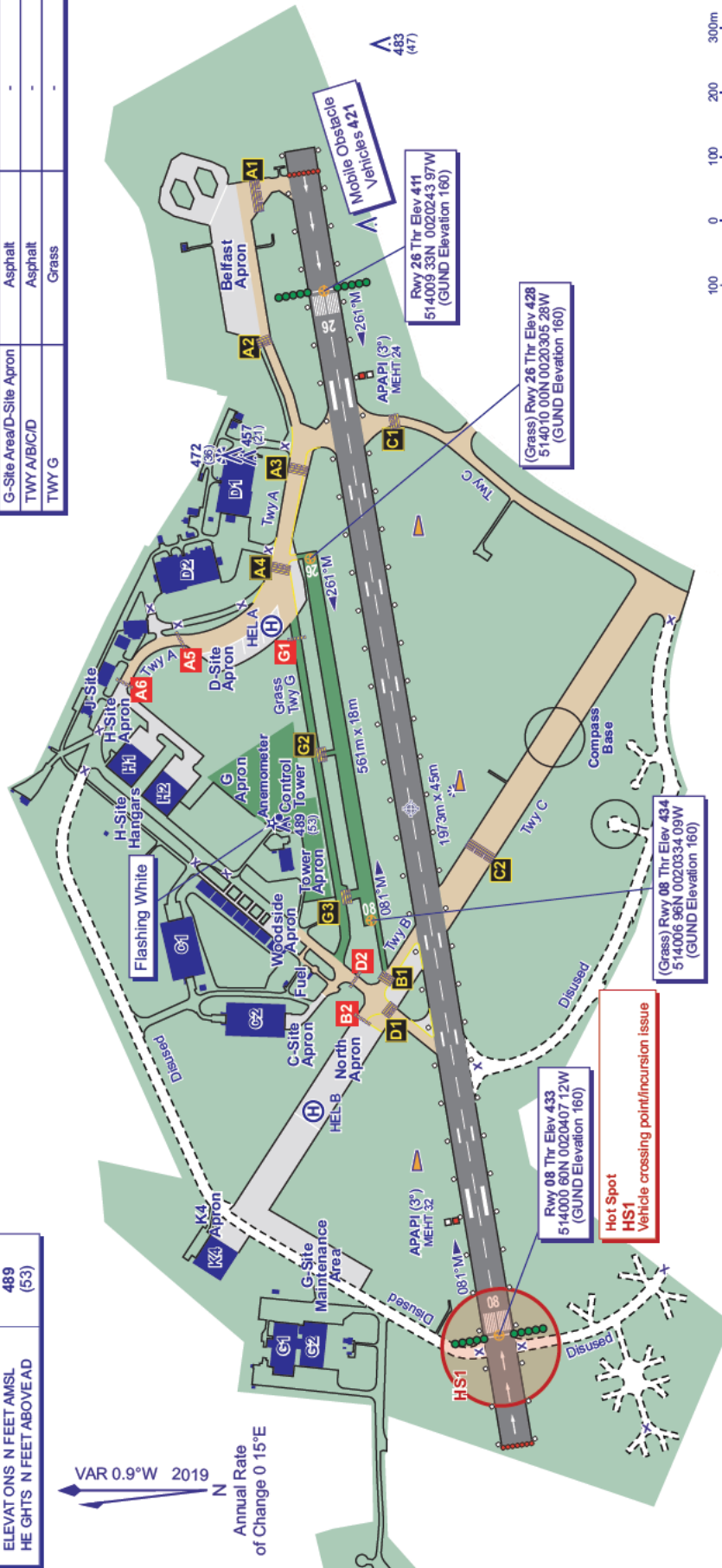
**KEMBLE
EGBP**

GUND (Geoid Undulation) = The height of the Geoid (MSL) above the Reference Ellipsoid (WGS 84) at the stated position	
BEARINGS ARE MAGNETIC	
ELEVATIONS AND HEIGHTS ARE IN FEET	
ELEVATIONS IN FEET AMSL	489
HEIGHTS IN FEET ABOVE	(53)

AERO INFO DATE 09 SEP 19

RUNWAY/TAXIWAY/APRON PHYSICAL CHARACTERISTICS		
APRON / RWY / TWY	SURFACE	BEARING STRENGTH
RWY 08/26	Asphalt	29/F/C/W/T
Apron G/Tower Apron	Grass	-
Belfast/North Apron	Asphalt	-
G-Site Area/D-Site Apron	Asphalt	-
TWY A/B/C/D	Asphalt	-
TWY G	Grass	-

VAR 0.9°W 2019
Annual Rate
of Change 0.15°E



COM	AF S	118 430	KEMBLE NFO
LIGHTING	THR 08/26	H elev green W bars	
	RWY 08/26	H elev bl-d edge End lights red	

CHANGE (12/19): OBSTACLES TAXIWAYS D-S TE APRON RWY 08/26 D MENS ONS

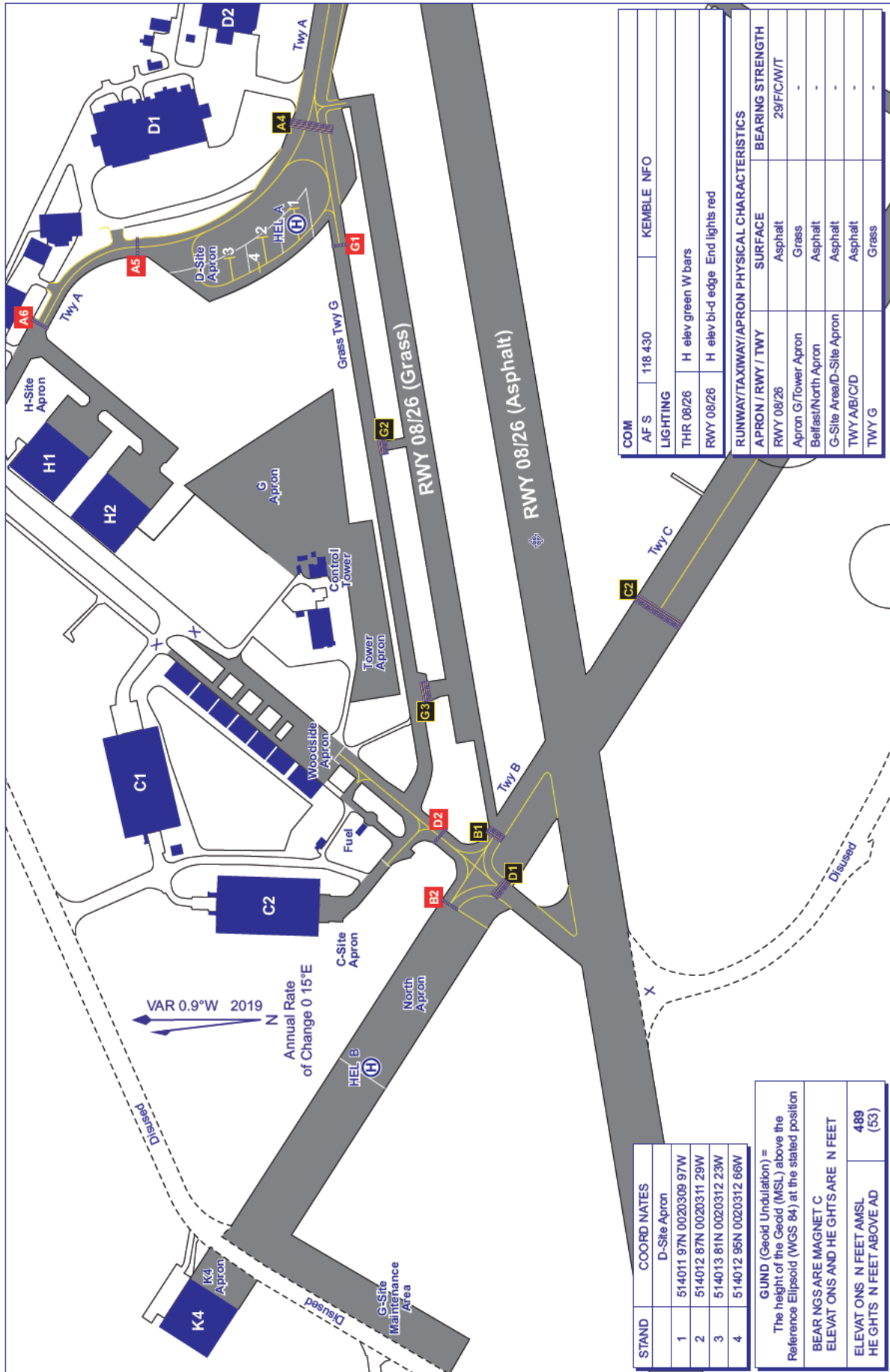
AD 2-EGBP-2-1

KEMBLE
EGBP

AD ELEV 436FT

ARP 514005N 0020325W

AIRCRAFT PARKING/DOCKING
CHART - ICAO



COM		KEMBLE INFO	
AF S	118 430		
LIGHTING			
THR 08/26	H elev green W bars		
RWY 08/26	H elev bi-d edge End lights red		
RUNWAY/TAXIWAY/APRON PHYSICAL CHARACTERISTICS			
APRON / RWY / TWY	SURFACE	BEARING STRENGTH	
RWY 08/26	Asphalt	29/FIC/W/T	
Apron G/Tower Apron	Grass	-	
Belfast/North Apron	Asphalt	-	
G- Site Area/D- Site Apron	Asphalt	-	
TWY AB/C/D	Asphalt	-	
TWY G	Grass	-	

STAND	COORD NATES
	D- Site Apron
1	514011 97N 0020309 97W
2	514012 87N 0020311 29W
3	514013 81N 0020312 23W
4	514012 95N 0020312 66W

GUND (Geoid Undulation) =	
The height of the Geoid (MSL) above the Reference Ellipsoid (WGS 84) at the stated position	
BEARINGS ARE MAGNETIC	
ELEVATIONS AND HEIGHTS ARE IN FEET	
ELEVATIONS IN FEET AMSL	489
HEIGHTS IN FEET ABOVE AD	(53)

CHANGE (12/19): TAXIWAYS D-S TE APRON STAND COORD NATES

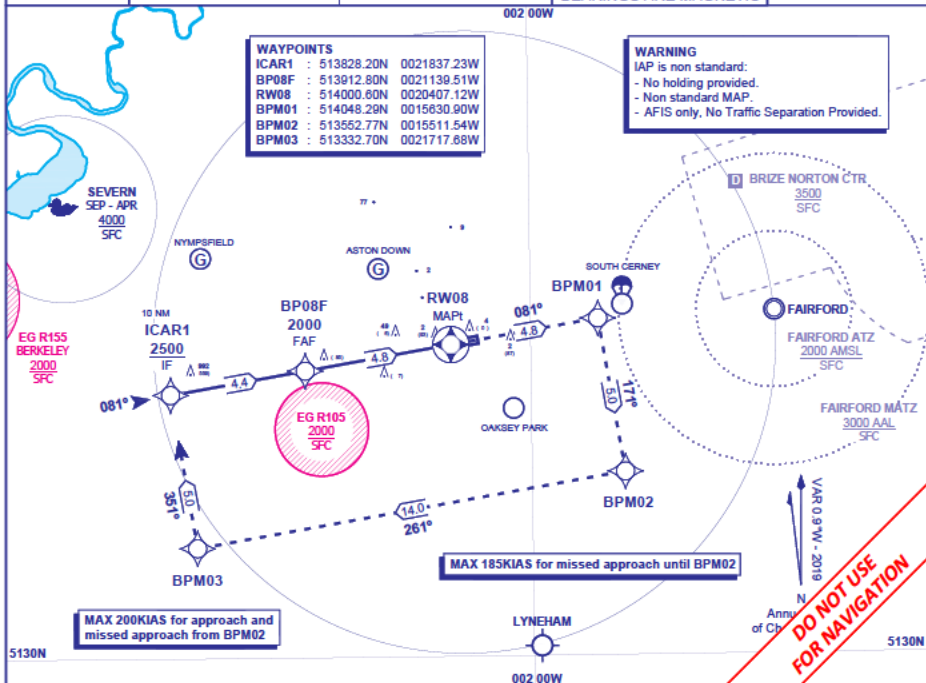
AERO INFO DATE 09 SEP 19

AD 2-EGBP-2-2

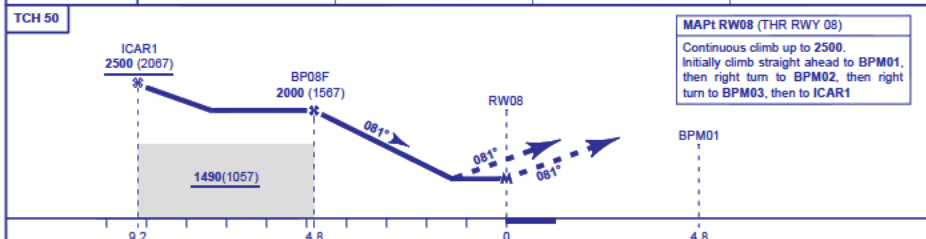
INSTRUMENT APPROACH CHART - ICAO

KEMBLE
RNP RWY 08
(ACFT CAT A,B,C,D)

<p>MSA 25NM ARP</p>	AFIS 118.900	KEMBLE INFORMATION	AD ELEVATION 436	EGNOS CH XXXXX E08A
	LARS 124.275	BRIZE RADAR	THR ELEVATION 433	
	RAD 133.750	BRIZE DIRECTOR	OBSTACLE ELEVATION	TRANSITION ALTITUDE 3000
	ZONE 119.000	BRIZE ZONE	2000 AMSL (1567) ABOVE THR	BEARINGS ARE MAGNETIC



RECOMMENDED PROFILE LPV/VNAV Vertical Path Angle 3.0 (LNAV 5.24%), 319 FT/NM				
NM to RW08	4	3	2	1
ALT (HGT)	1760 (1327)	1440 (1007)	1120 (687)	800 (367)



Aircraft Category	Rate of descent				G/S KT					
	A	B	C	D	160	140	120	100	80	
OCA (OCH)	LPV	933 (500)	933 (500)	933 (500)	933 (500)	850	740	640	530	420
	LNAV/VNAV	940 (507)	940 (507)	940 (507)	940 (507)					
VM(C)OCA (OCH AAL)	Total Area	940 (504)	980 (544)	1160 (724)	1270 (834)					

NOTE

- 1 IAP only available during notified ATZ hrs and AFIS available.
- 2 IAP is in Class G airspace.
- 3 Pilots are advised of gliding activity in the vicinity of Kemble.
- 4 Pilots are advised of IAPs to RWY 07/25 at RAF Brize Norton.
- 5 RAF Fairford notified operational by NOTAM.

CHANGE (MM/YY): CHART VERSION 1.0
AERO INFO DATE DD MMM YY

Instrument Approach Procedure Coding Tables

Procedure Name: EGBP - RNP RWY08

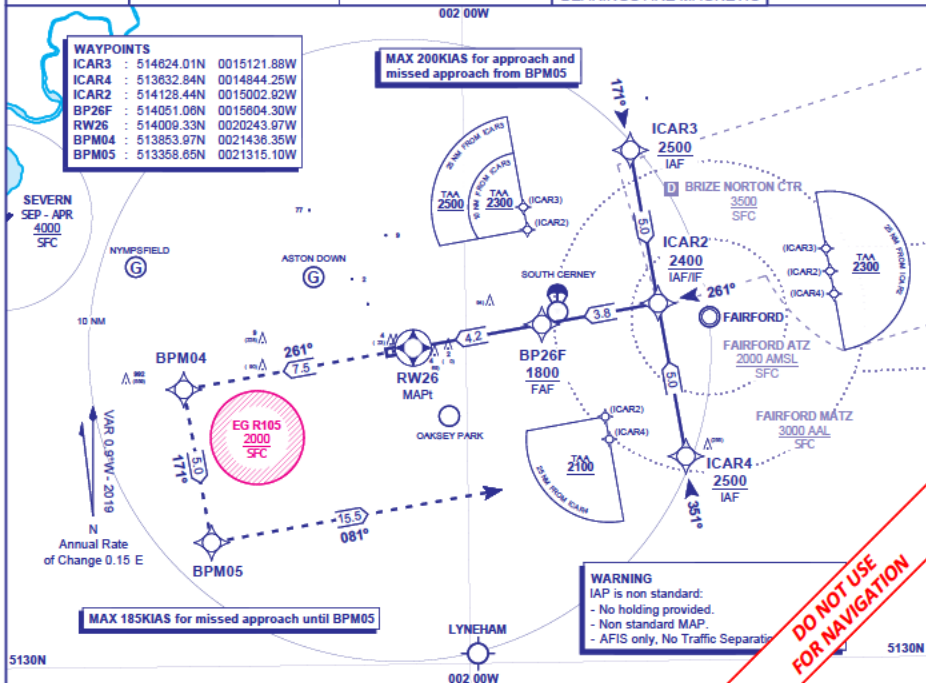
Version: 1.0

Kemble RNP RWY08 - Instrument Approach Procedure via ICAR1										
Designator	Sequence Number	Path Terminator	Waypoint Name	Fly-over	Course / Track °M (°T)	Turn Direction	Level Constraint	Speed Constraint	Co-ordinates	Remarks and Distance to MAPt
R08	001	IF	ICAR1	-	-	-	<u>2500</u>	200	513828.20N 0021837.23W	IF / 9.2NM
R08	002	TF	BP08F	-	81° (80.22°)	-	2000	185	513912.80N 0021139.51W	FAF / 4.8NM
R08	003	TF	RW08	Y	81° (80.31°)	-	-	185	514000.60N 0020407.12W	MAPt
R08	004	TF	BPM01	-	81° (80.41°)	RIGHT	-	185	514048.29N 0015630.90W	-
R08	005	TF	BPM02	-	171° (170.51°)	RIGHT	-	185	513552.77N 0015511.54W	-
R08	006	TF	BPM03	-	261° (260.52°)	RIGHT	-	200	513332.70N 0021717.68W	-
R08	007	TF	ICAR1	-	351° (350.49°)	-	2500	200	513828.20N 0021837.23W	-

INSTRUMENT APPROACH CHART - ICAO

KEMBLE
RNP RWY 26
(ACFT CAT A,B,C,D)

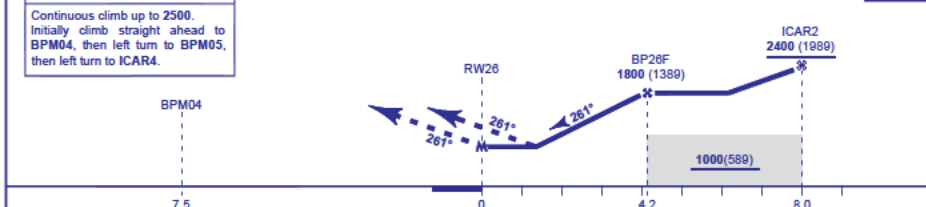
	AFIS 118.900	KEMBLE INFORMATION	AD ELEVATION 436	EGNOS CH XXXXX E26A
	LARS 124.275	BRIZE RADAR	THR ELEVATION 411	
	RAD 133.750	BRIZE DIRECTOR	OBSTACLE ELEVATION	TRANSITION ALTITUDE 3000
	ZONE 119.000	BRIZE ZONE	2000 AMSL (1550) (ABOVE THR)	
			BEARINGS ARE MAGNETIC	



RECOMMENDED PROFILE LPV/VNAV Vertical Path Angle 3.0 (LNAV 5.24%), 319 FT/NM

NM to RW08	4	3	2	1
ALT (HGT)	1730 (1319)	1420 (1009)	1100 (899)	780 (389)

MAPt RW26 (THR RWY 26) TCH 50



Aircraft Category		A	B	C	D	Rate of descent	G/S KT				
		FT/MIN	850	740	640		530	420	160	140	120
OCA (OCH)	LPV	911 (500)	911 (500)	911 (500)	911 (500)						
	LNAV/VNAV	920 (509)	920 (509)	920 (509)	920 (509)						
LNAV	920 (509)	920 (509)	920 (509)	920 (509)							
VM(C)OCA (OCH AAL)	Total Area	940 (504)	980 (544)	1160 (724)	1270 (834)						

NOTE 1 IAP only available during notified ATZ hrs and AFIS available.
 2 IAP is in Class G airspace.
 3 Pilots are advised of gliding activity in the vicinity of Kemble.
 4 Pilots are advised of IAPs to RWY 07/25 at RAF Brize Norton.
 5 RAF Fairford notified operational by NOTAM.

CHANGE (MM/YY): CHART VERSION 1.0

AERO INFO DATE DD MMM YY

Instrument Approach Procedure Coding Tables

Procedure Name: EGBP - RNP RWY26

Version: 1.0

Kemble RNP RWY26 - Instrument Approach Procedure via ICAR3										
Designator	Sequence Number	Path Terminator	Waypoint Name	Fly-over	Course / Track °M (°T)	Turn Direction	Level Constraint	Speed Constraint	Co-ordinates	Remarks and Distance to MAPt
R26R	001	IF	ICAR3	-	-	-	<u>2500</u>	200	514624.01N 0015121.88W	IAF
R26R	002	TF	ICAR2	-	171° (170.57°)	RIGHT	<u>2400</u>	200	514128.44N 0015002.92W	IF / 8.0NM
R26R	003	TF	BP26F	-	261° (260.59°)	-	1800	185	514051.06N 0015604.30W	FAF / 4.2NM
R26R	004	TF	RW26	Y	261° (260.51°)	-	-	185	514009.33N 0020243.97W	MAPt
R26R	005	TF	BPM04	-	261° (260.42°)	LEFT	-	185	513853.97N 0021436.35W	-
R26R	006	TF	BPM05	-	171° (170.27°)	LEFT	-	185	513358.65N 0021315.10W	-
R26R	007	TF	ICAR4	-	81° (80.29°)	-	2500	200	513632.84N 0014844.25W	-

Instrument Approach Procedure Coding Tables

Procedure Name: EGBP - RNP RWY26

Version: 1.0

Kemble RNP RWY26 - Instrument Approach Procedure via ICAR2										
Designator	Sequence Number	Path Terminator	Waypoint Name	Fly-over	Course / Track °M (°T)	Turn Direction	Level Constraint	Speed Constraint	Co-ordinates	Remarks and Distance to MAPt
R26C	002	IF	ICAR2	-	-	-	<u>2400</u>	200	514128.44N 0015002.92W	IAF / IF
R26C	003	TF	BP26F	-	261° (260.59°)	-	1800	185	514051.06N 0015604.30W	FAF / 4.2NM
R26C	004	TF	RW26	Y	261° (260.51°)	-	-	185	514009.33N 0020243.97W	MAPt
R26C	005	TF	BPM04	-	261° (260.42°)	LEFT	-	185	513853.97N 0021436.35W	-
R26C	006	TF	BPM05	-	171° (170.27°)	LEFT	-	185	513358.65N 0021315.10W	-
R26C	007	TF	ICAR4	-	81° (80.29°)	-	2500	200	513632.84N 0014844.25W	-

Instrument Approach Procedure Coding Tables

Procedure Name: EGBP - RNP RWY26

Version: 1.0

Kemble RNP RWY26 - Instrument Approach Procedure via ICAR4										
Designator	Sequence Number	Path Terminator	Waypoint Name	Fly-over	Course / Track °M (°T)	Turn Direction	Level Constraint	Speed Constraint	Co-ordinates	Remarks and Distance to MAPt
R26L	001	IF	ICAR4	-	-	-	<u>2500</u>	200	513632.84N 0014844.25W	IAF
R26L	002	TF	ICAR2	-	351° (350.61°)	LEFT	<u>2400</u>	200	514128.44N 0015002.92W	IF / 8.0NM
R26L	003	TF	BP26F	-	261° (260.59°)	-	1800	185	514051.06N 0015604.30W	FAF / 4.2NM
R26L	004	TF	RW26	Y	261° (260.51°)	-	-	185	514009.33N 0020243.97W	MAPt
R26L	005	TF	BPM04	-	261° (260.42°)	LEFT	-	185	513853.97N 0021436.35W	-
R26L	006	TF	BPM05	-	171° (170.27°)	LEFT	-	185	513358.65N 0021315.10W	-
R26L	007	TF	ICAR4	-	81° (80.29°)	-	2500	200	513632.84N 0014844.25W	-