

NATS

Bristol Airport ACP
Stage 2 'Develop & Assess'

Step 2A – Options development. Workshop 2

13 February 2020

The NATS logo is displayed in a white, italicized, sans-serif font. It is positioned in the bottom right corner of the slide. The background of the slide is a dark teal color with a large, abstract, light blue graphic element that resembles a stylized swoosh or a curved line on the right side.

Bristol Airport ACP - workshop 2

- Introductions

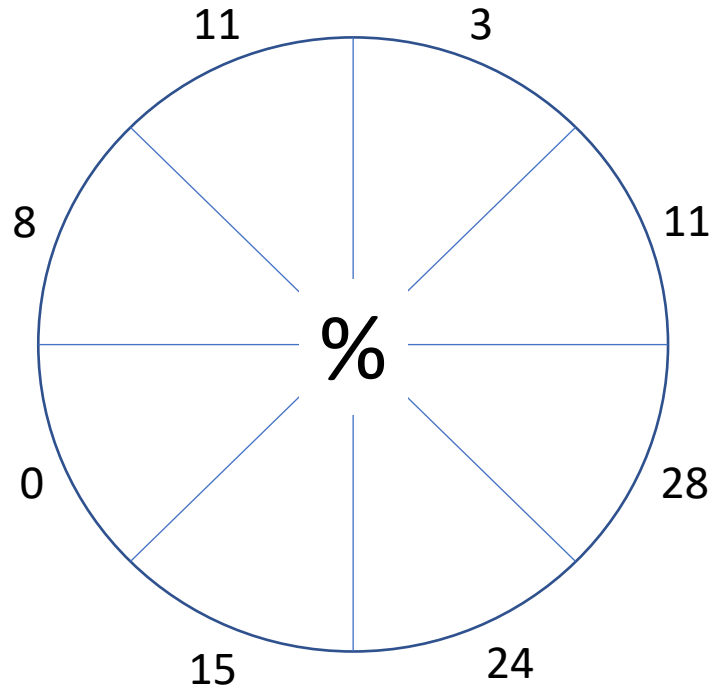
 – Bristol Airport operational impact analysis

- Traffic distribution
- PDG initial assessment
- Route & Hold development discussion
- Agree concept options for LAMP development simulation
- AOB

Traffic distribution

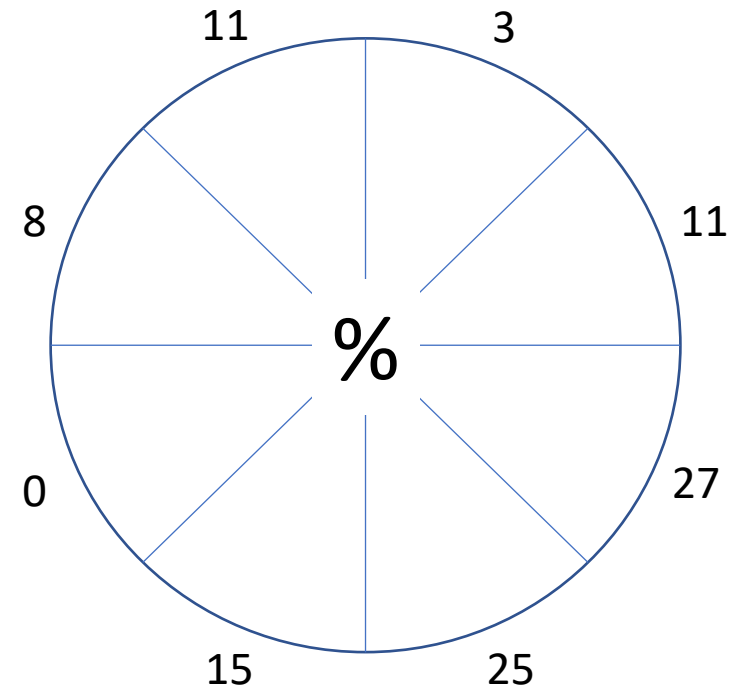
ARRIVALS

(9,187)



DEPARTURES

(9,346)

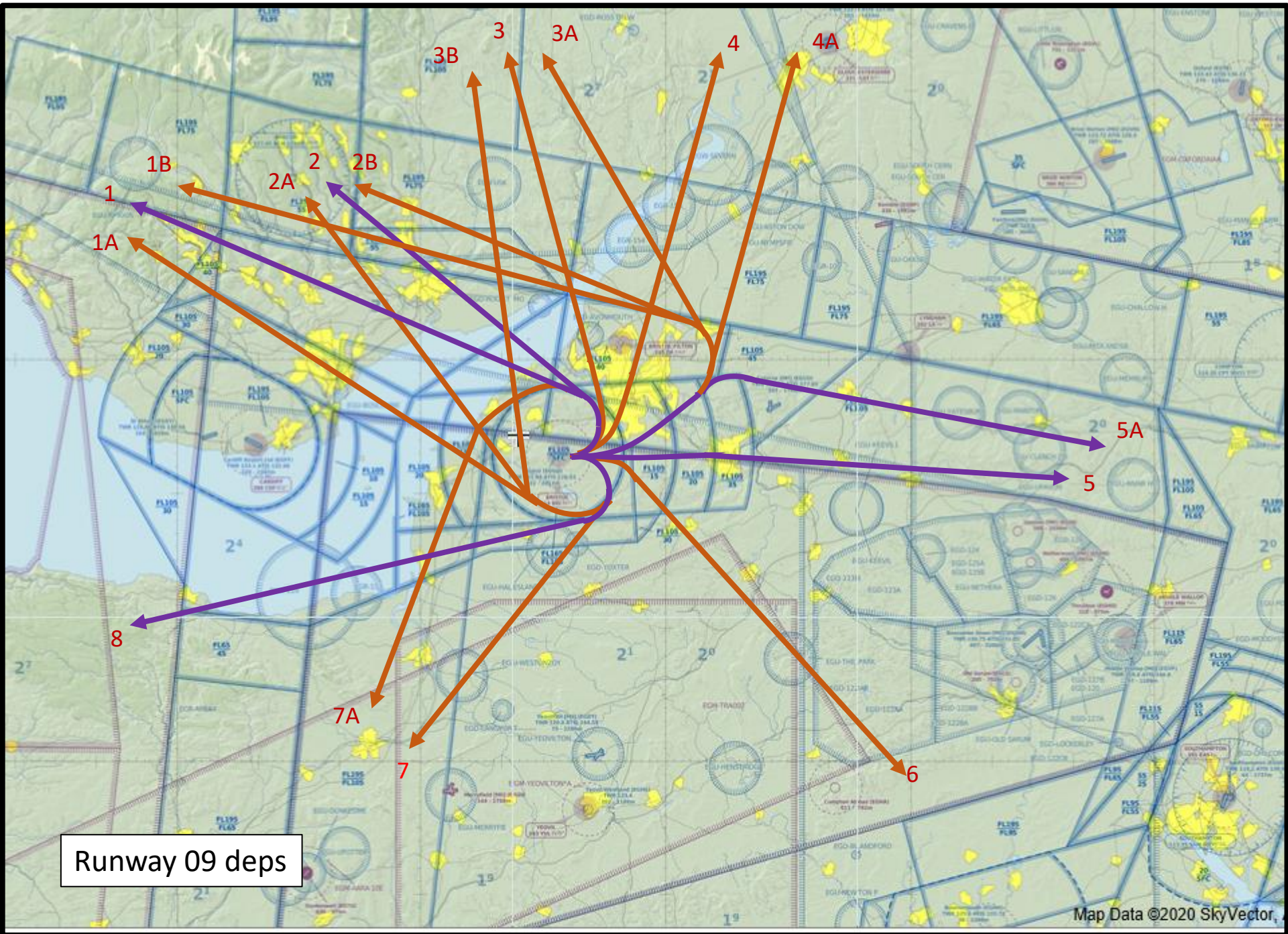


Totals for 3 months: June to August 2019

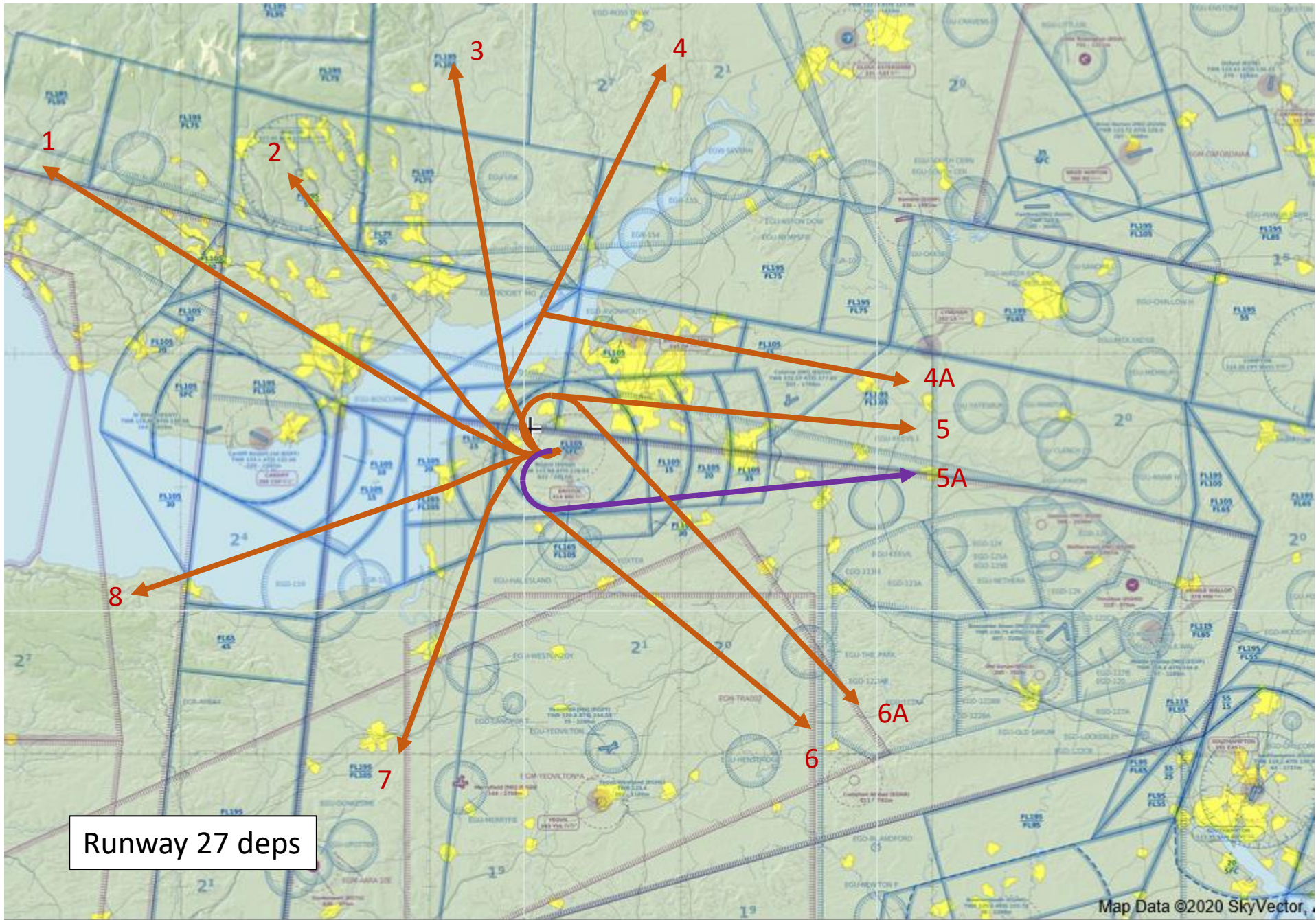
PDG initial IFP assessment

- 09 LTO (ground track? 7000ft @ 3.3% and 8% climb gradients?)
- 09 RTO and 27 LTO (ground track & obstacle clearance?)
- 09 to East: level abeam KENET?


- All based on workshop 1 routes/ 500' AGL initial turn/ 250kts IAS




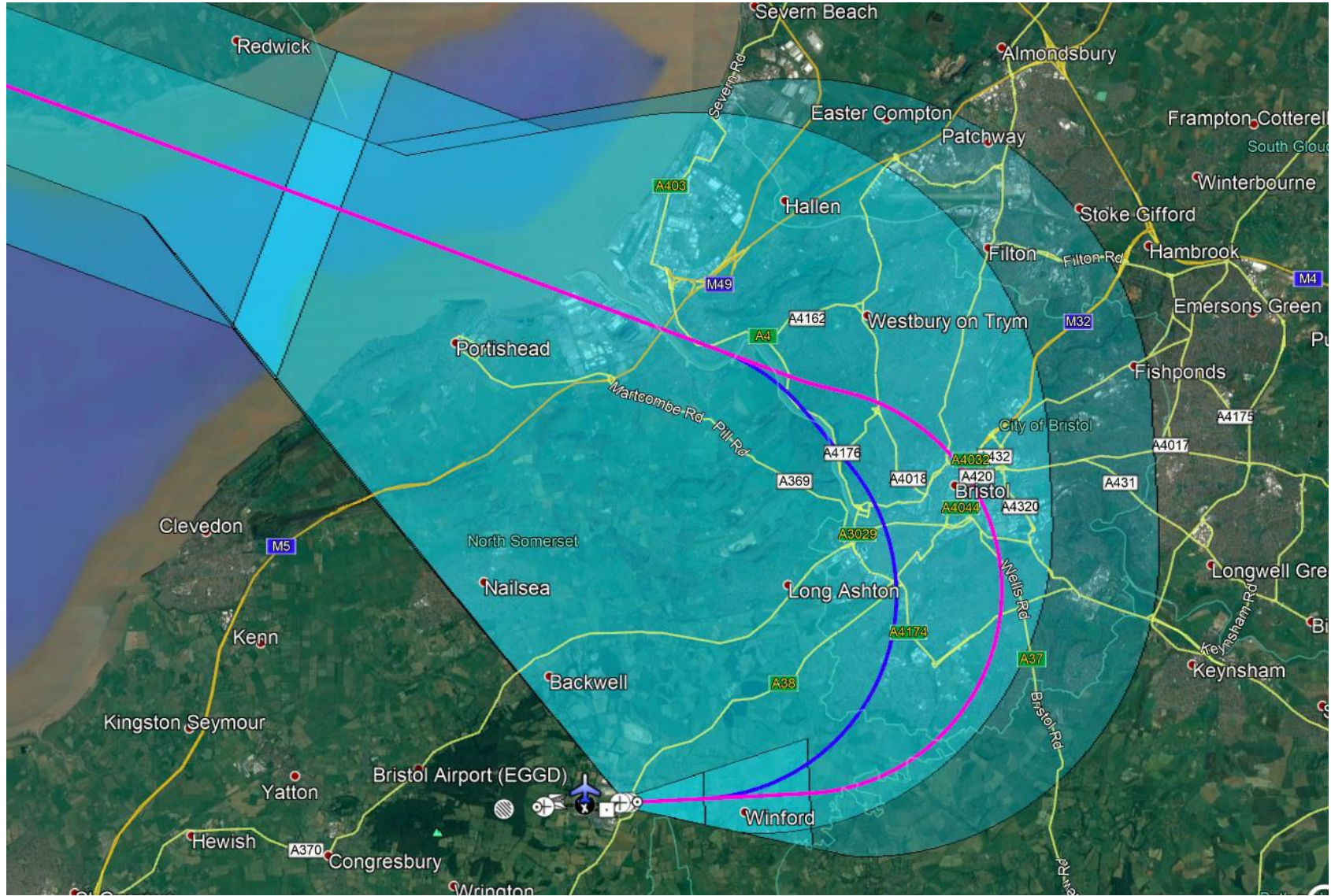
Runway 09 deps




**09 LTO
Route 1**


 = 3.3%

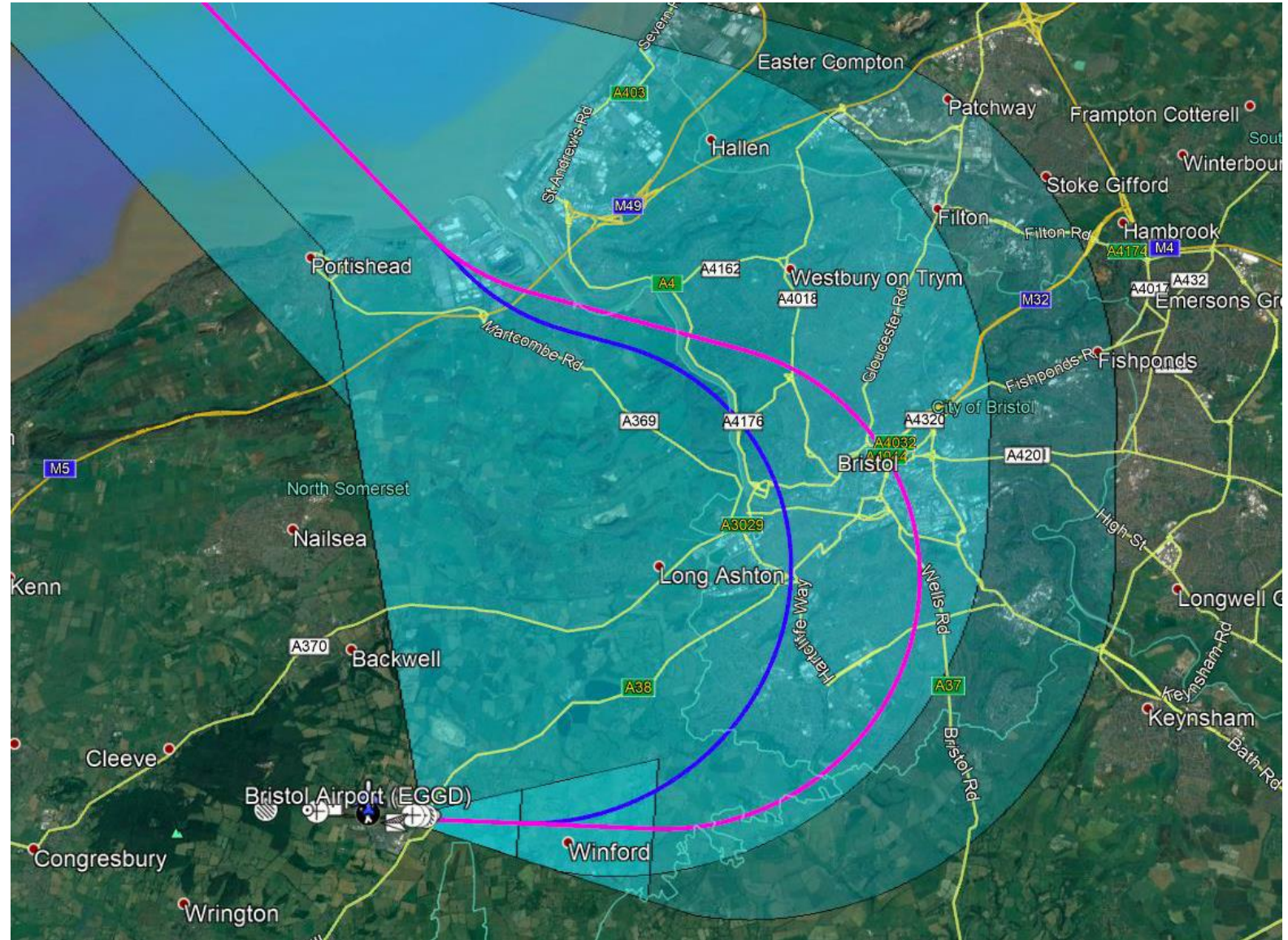
 = 8%

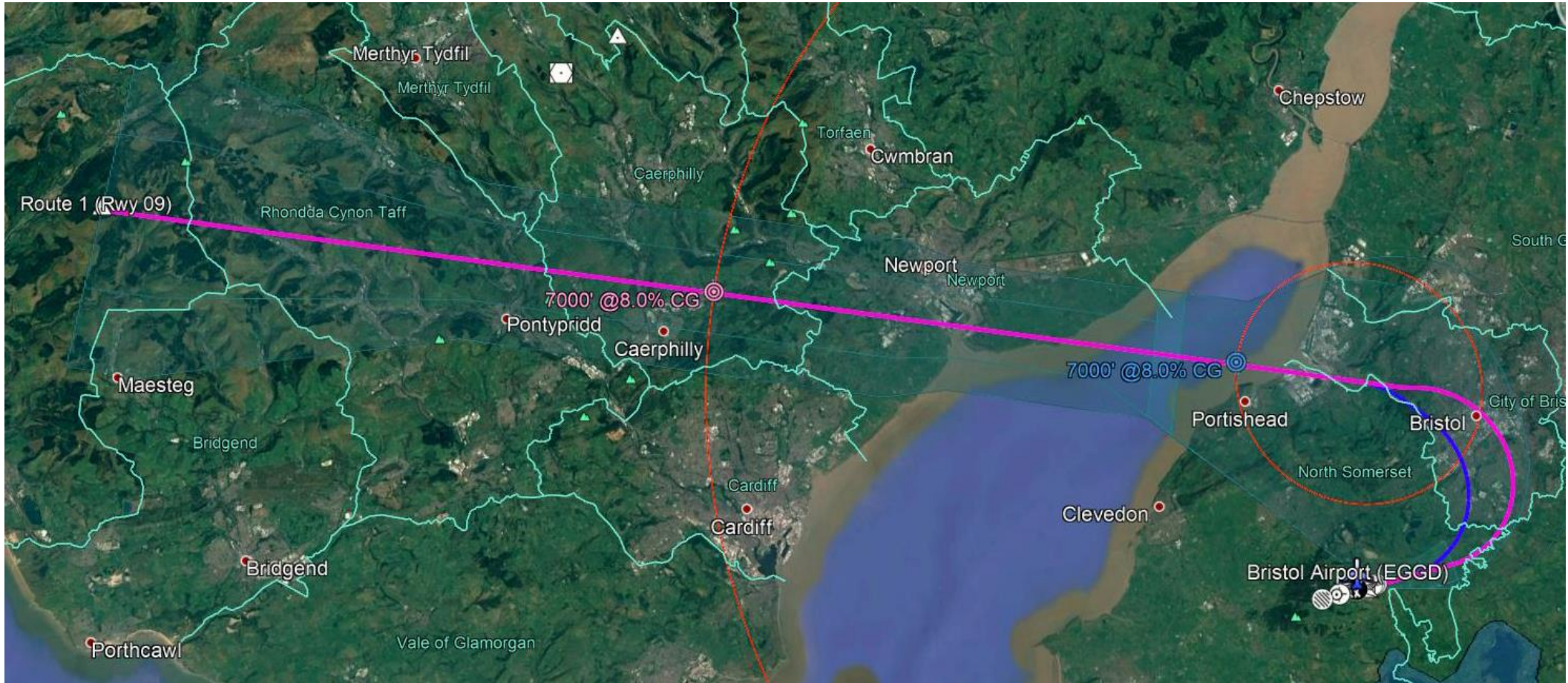


09 LTO Route 2

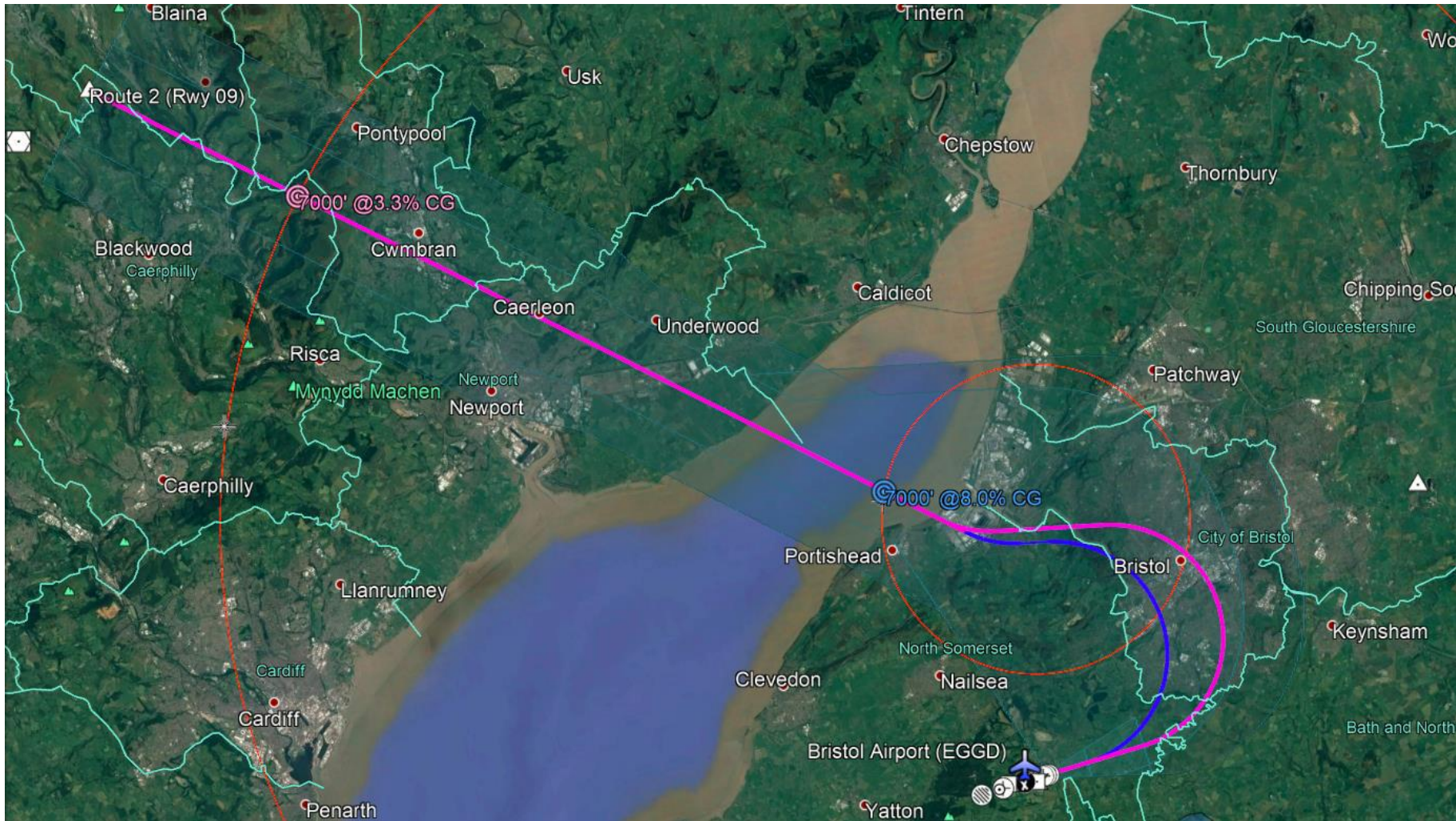
 = 3.3%

 = 8%





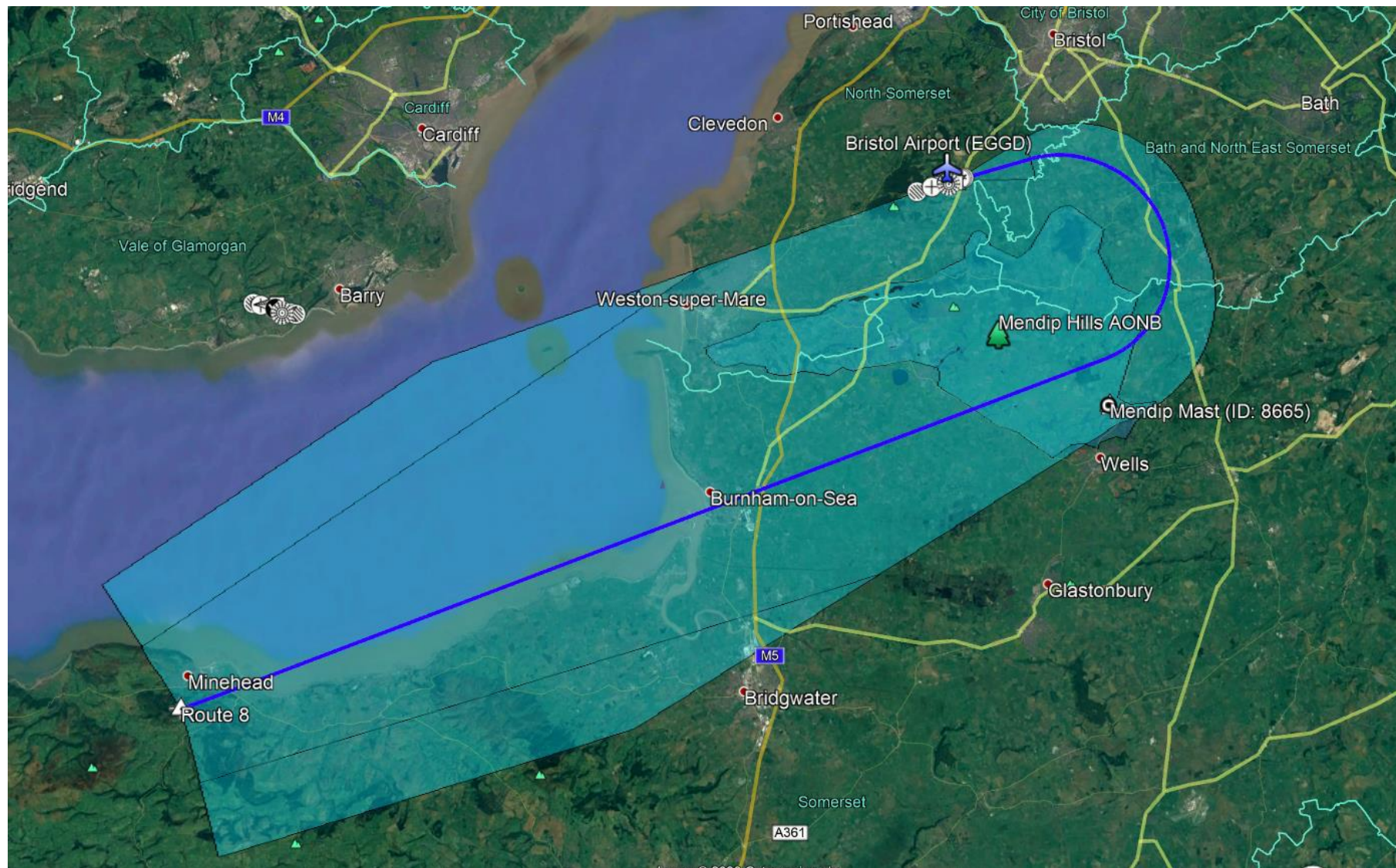
Route 1. 7000ft @ 3.3% and 8%



Route 2. 7000ft @ 3.3% and 8%

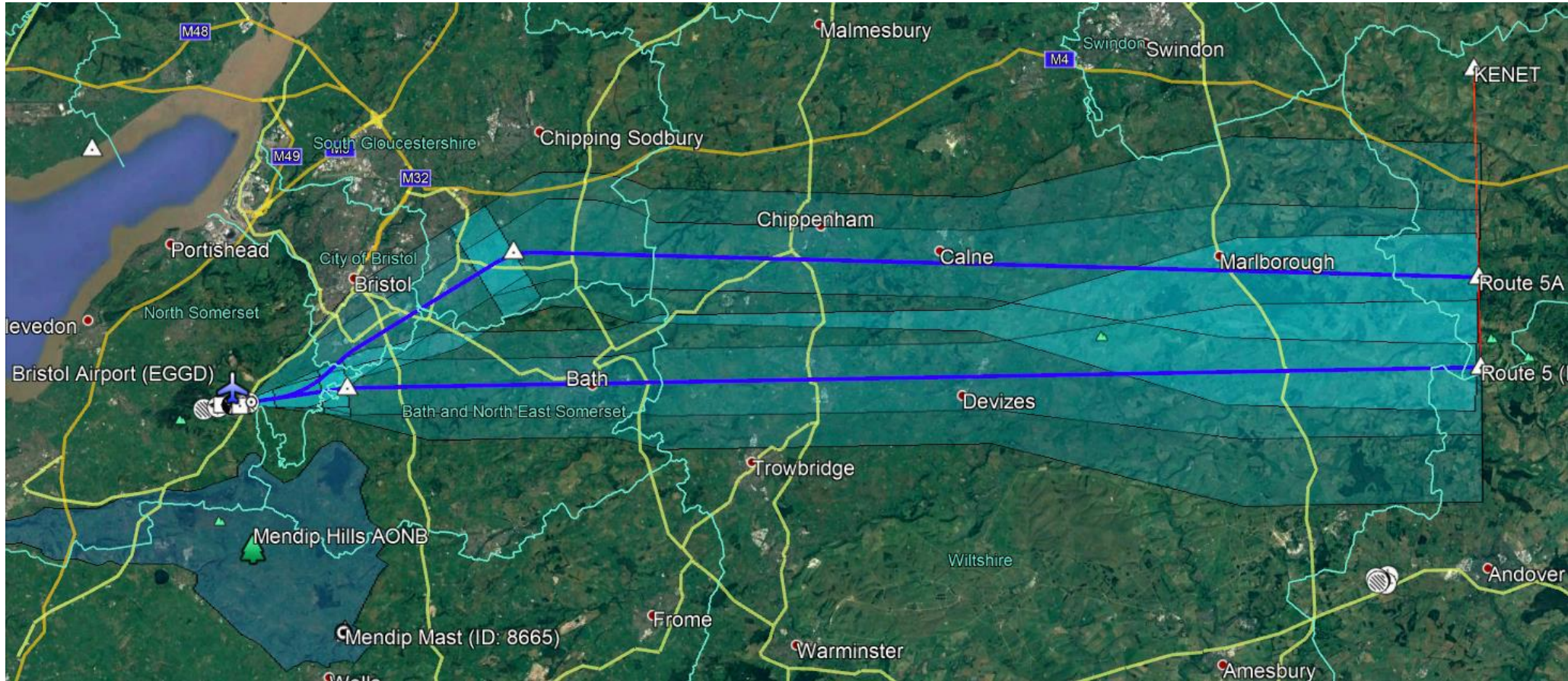
09 RTO
Route 8

500ft AGL,
250kts





27 LTO Route 5A. 500ft AGL, 250kts



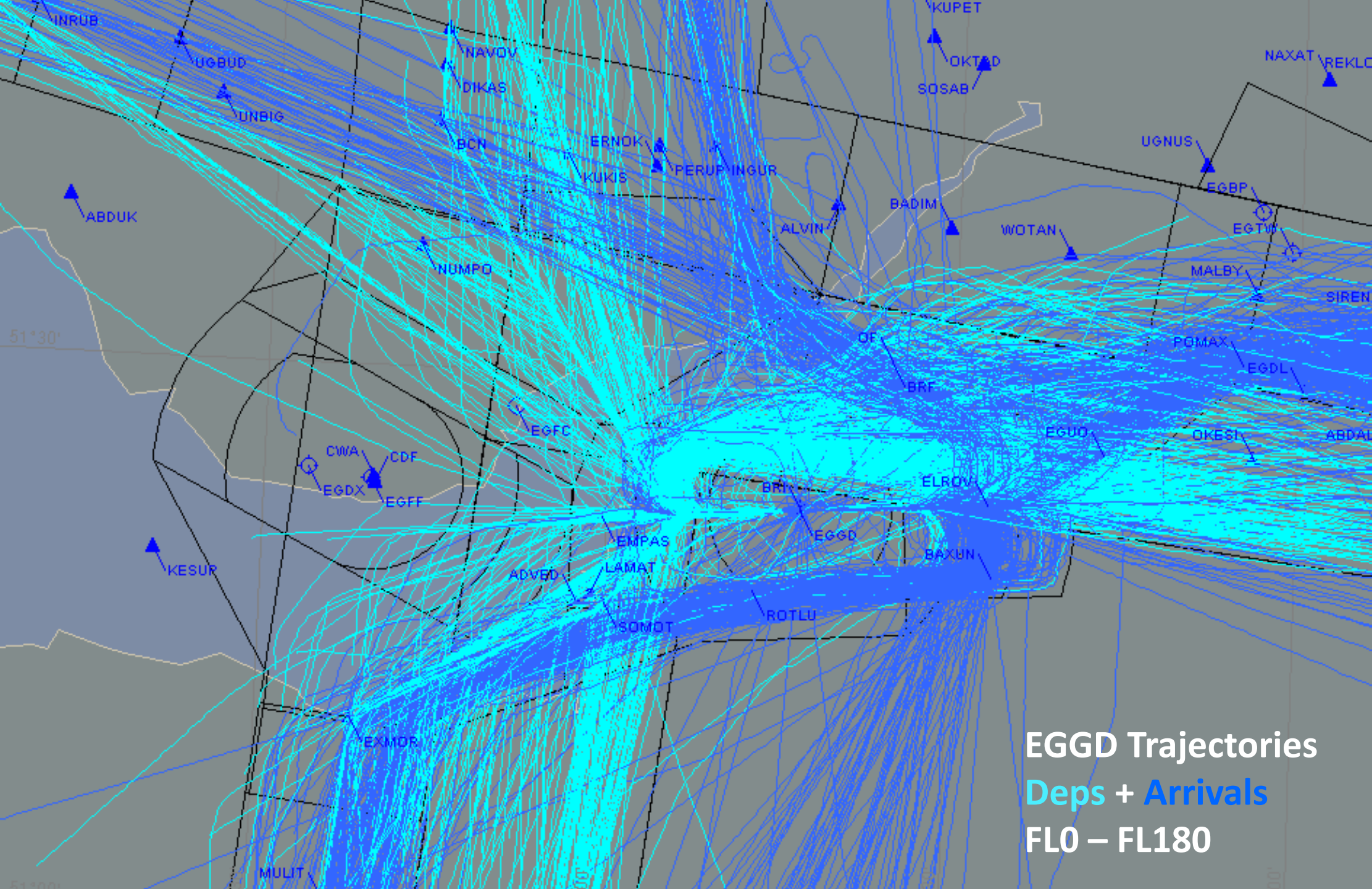
09 to abeam KENET

- Route 5. 8% = 23,060' abeam KENET
- Route 5. 8.4% = 24,180'
- Route 5A. 8% = 23,770'
- Route 5A. 8.1% = 24,050'

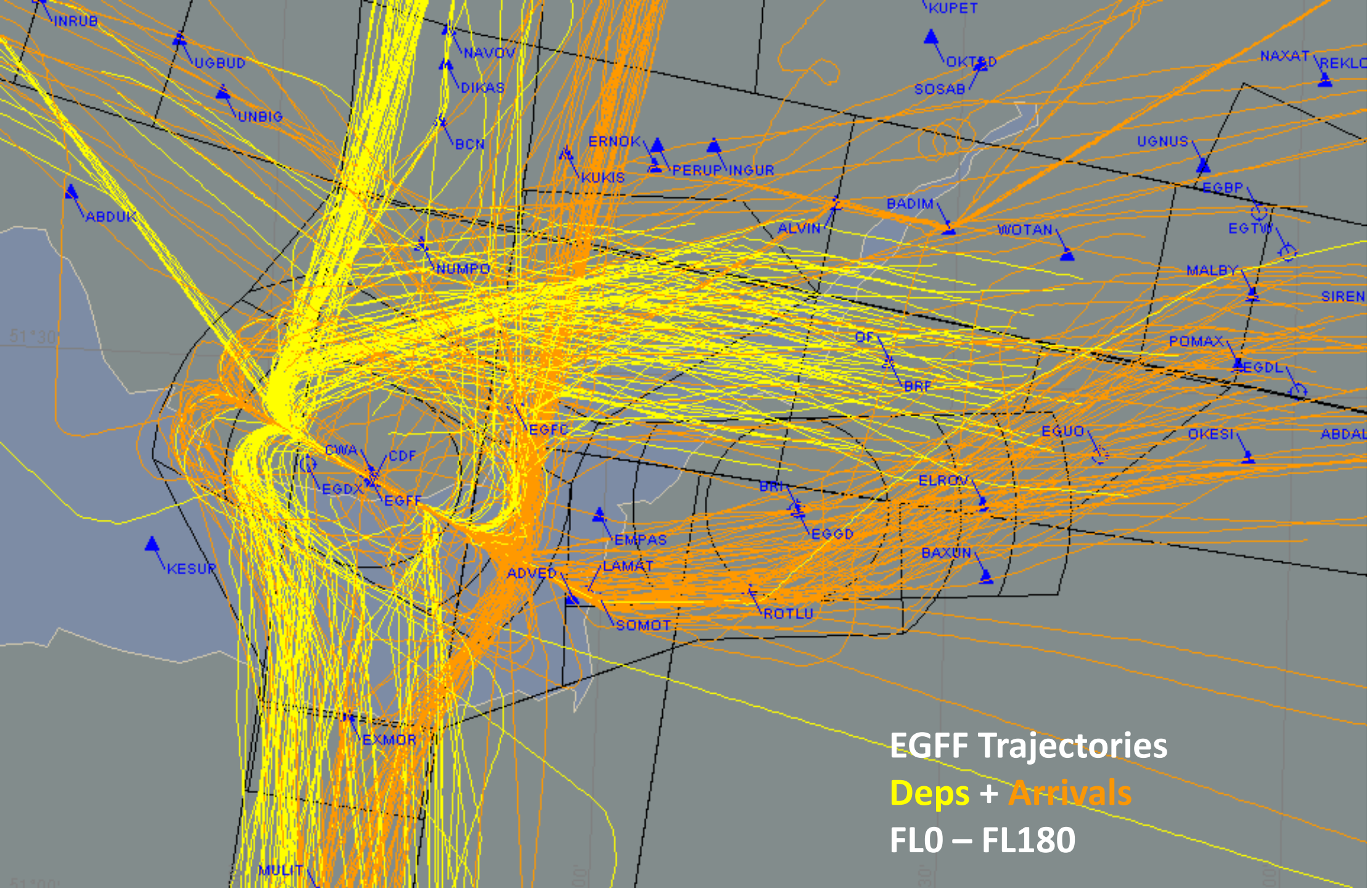
Design options development

Update following BRS/LAMP workshop

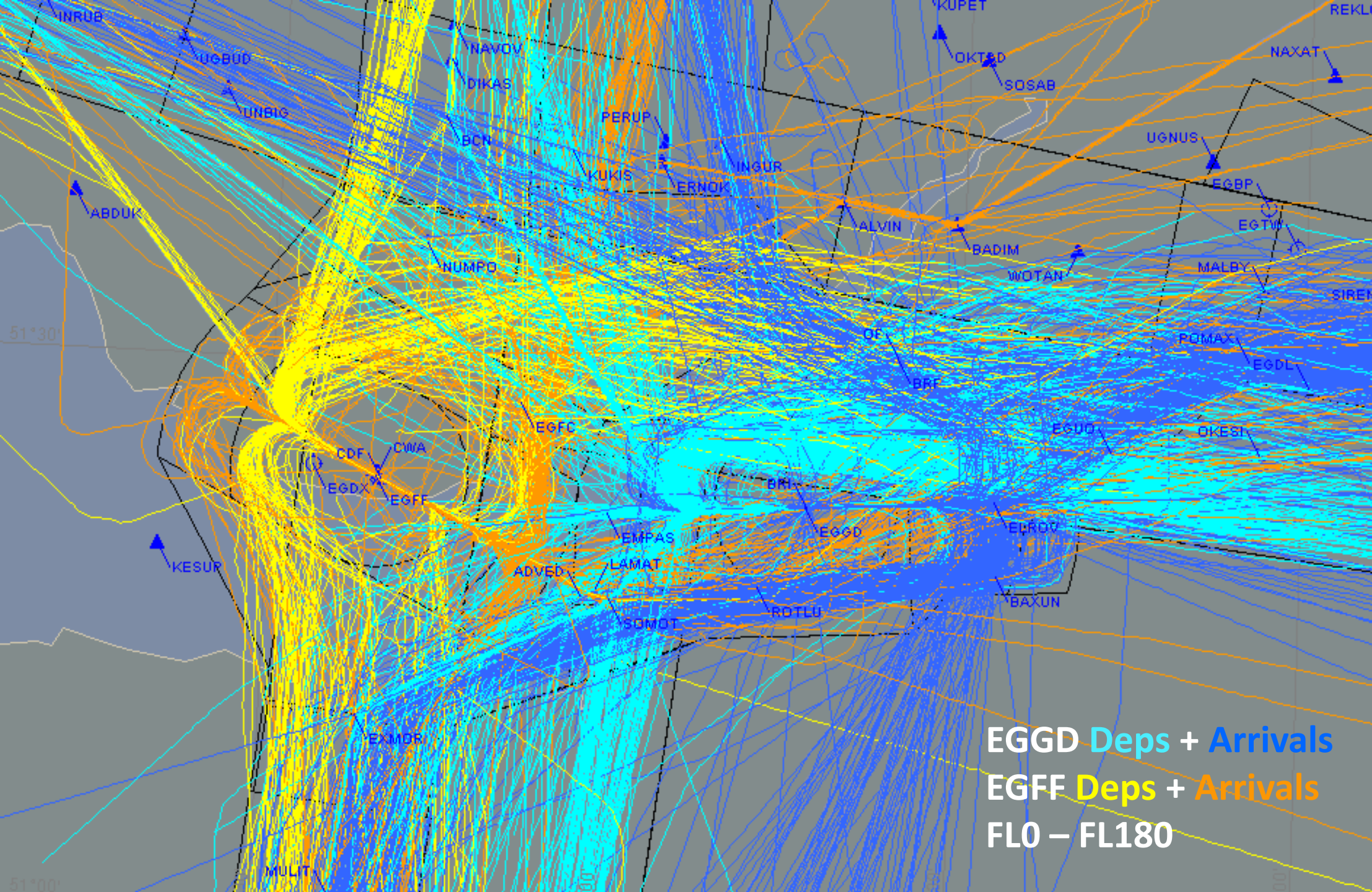
Discussion...



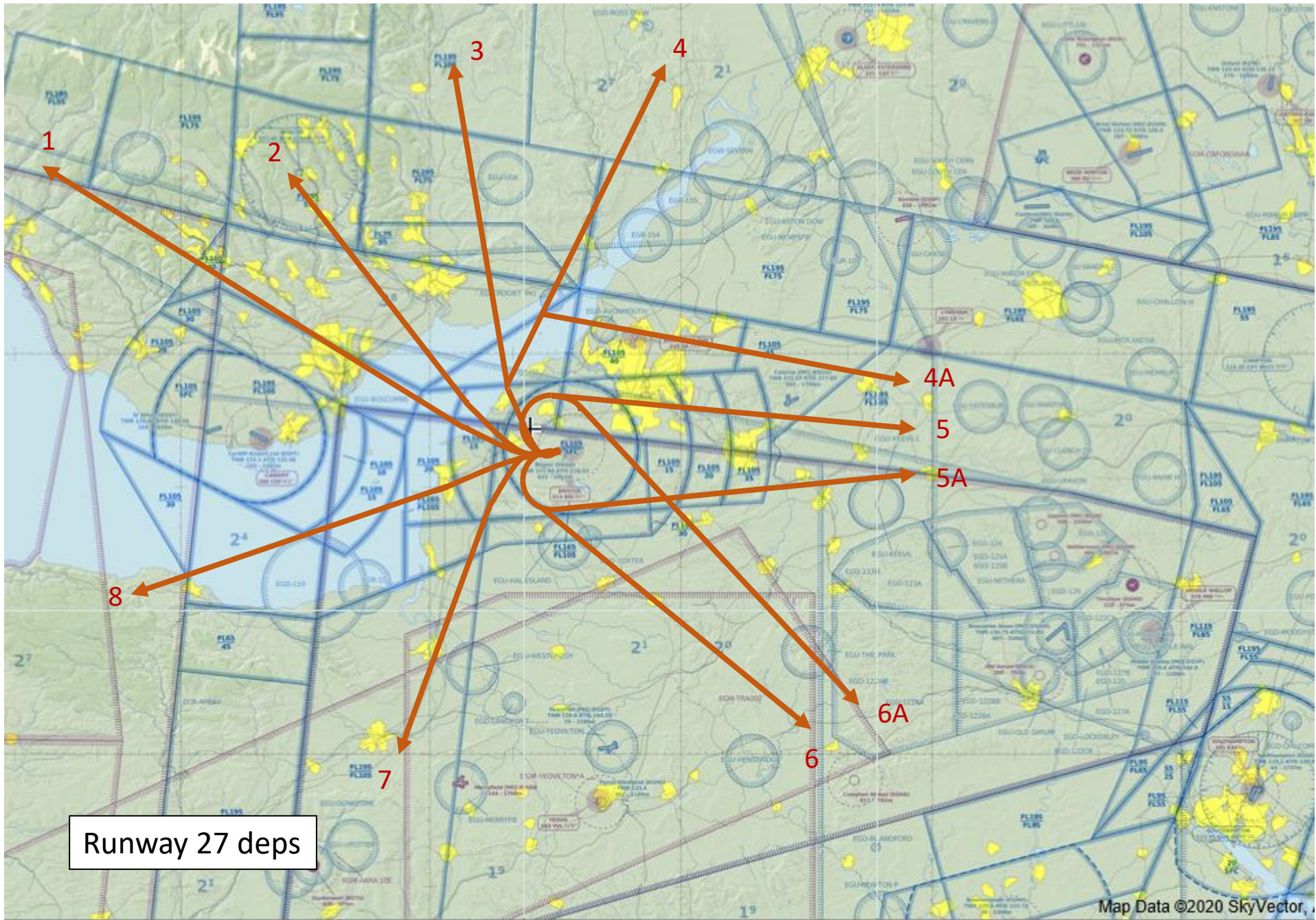
EGGD Trajectories
Deps + Arrivals
FLO – FL180

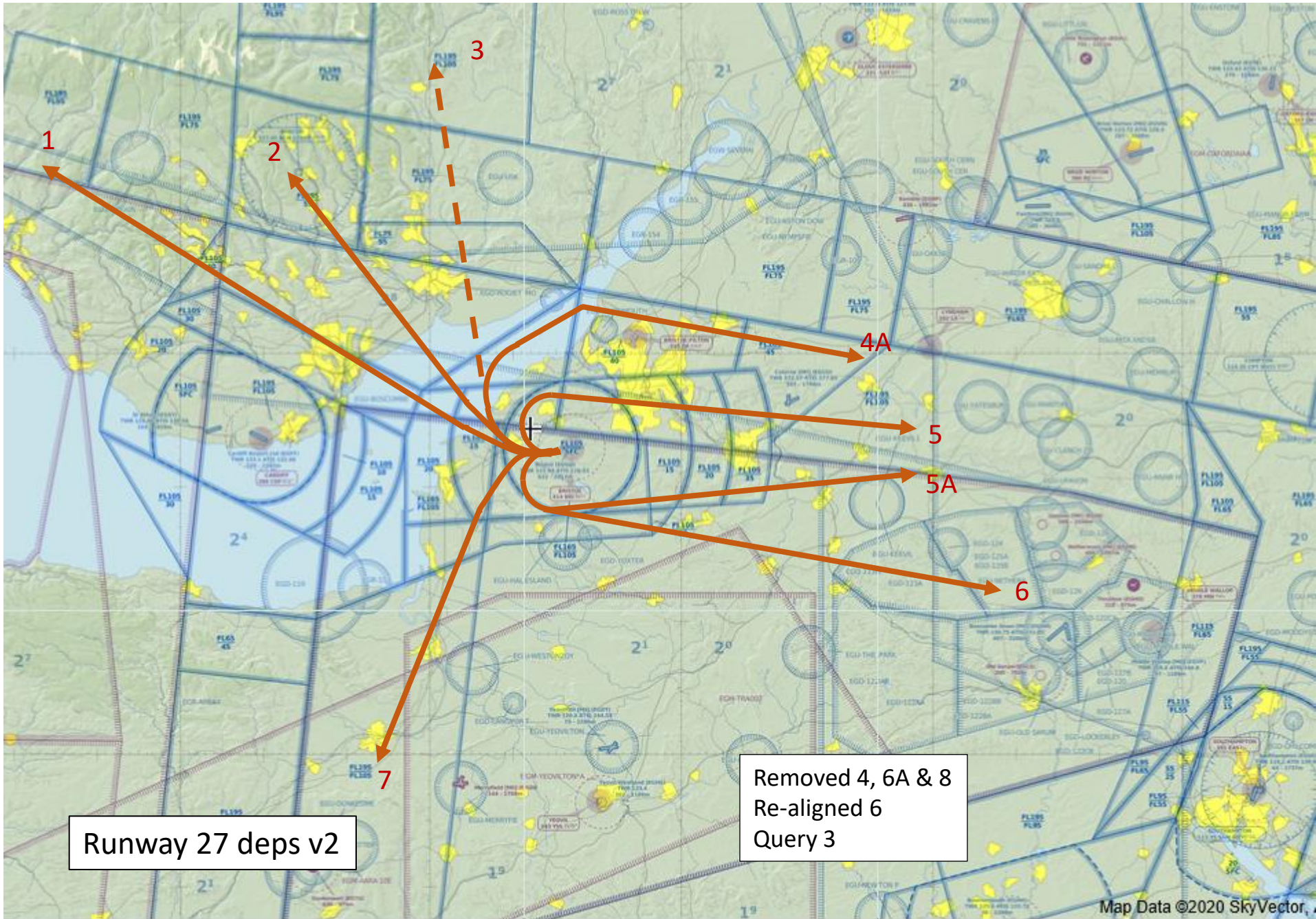


EGFF Trajectories
Dep's + Arrivals
FLO – FL180



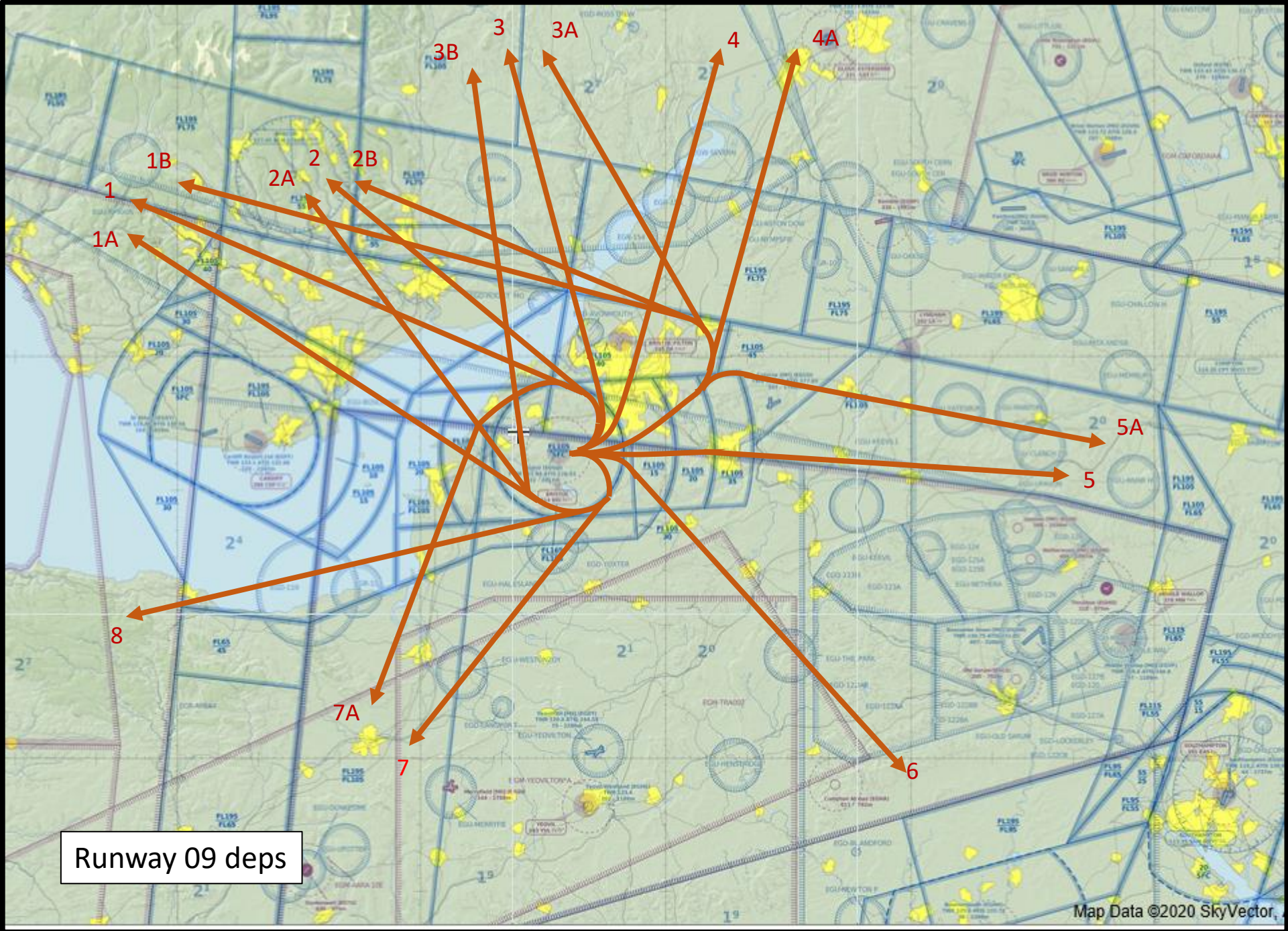
EGGD Deps + Arrivals
EGFF Deps + Arrivals
FLO – FL180

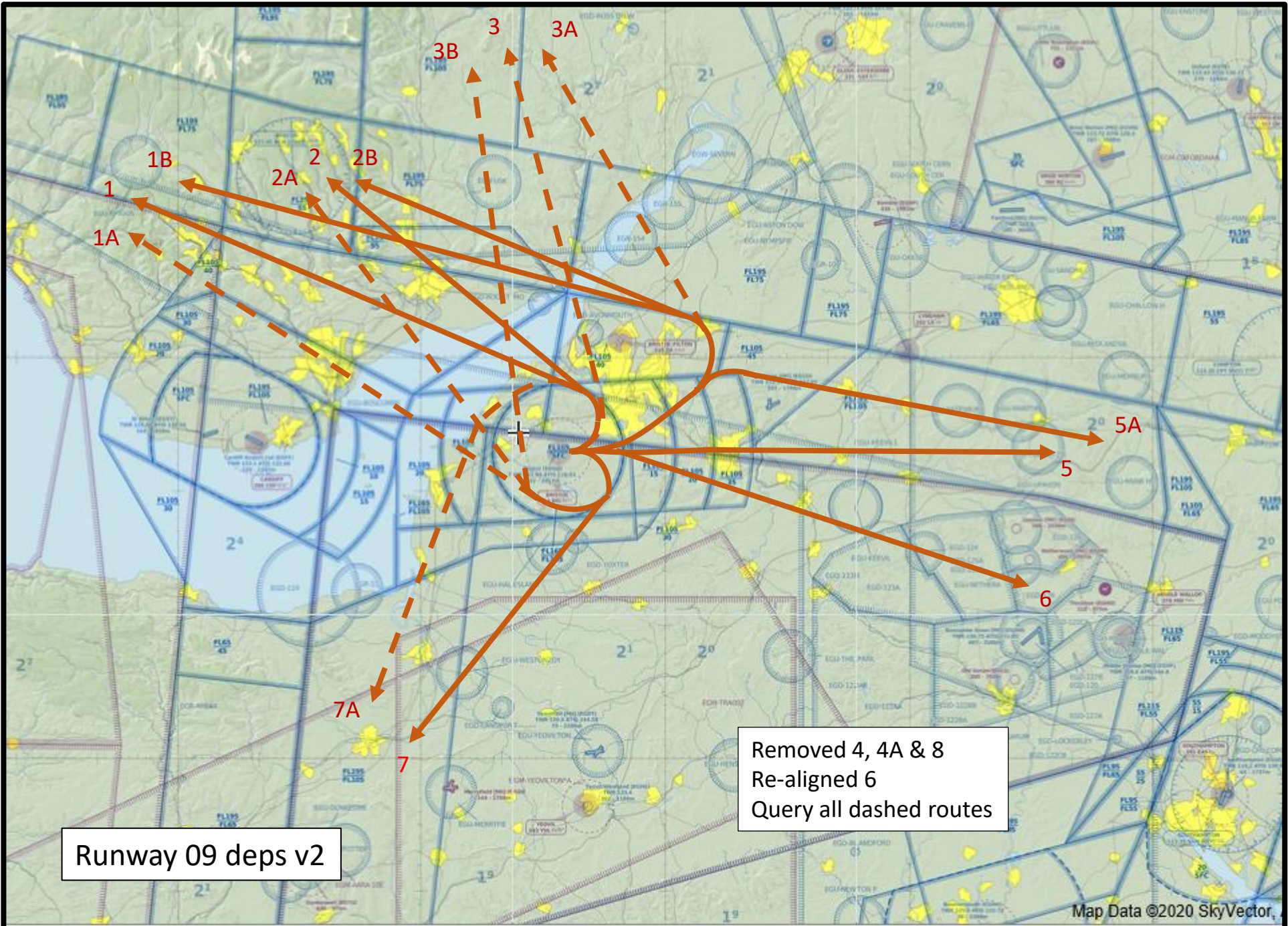




Runway 27 deps v2

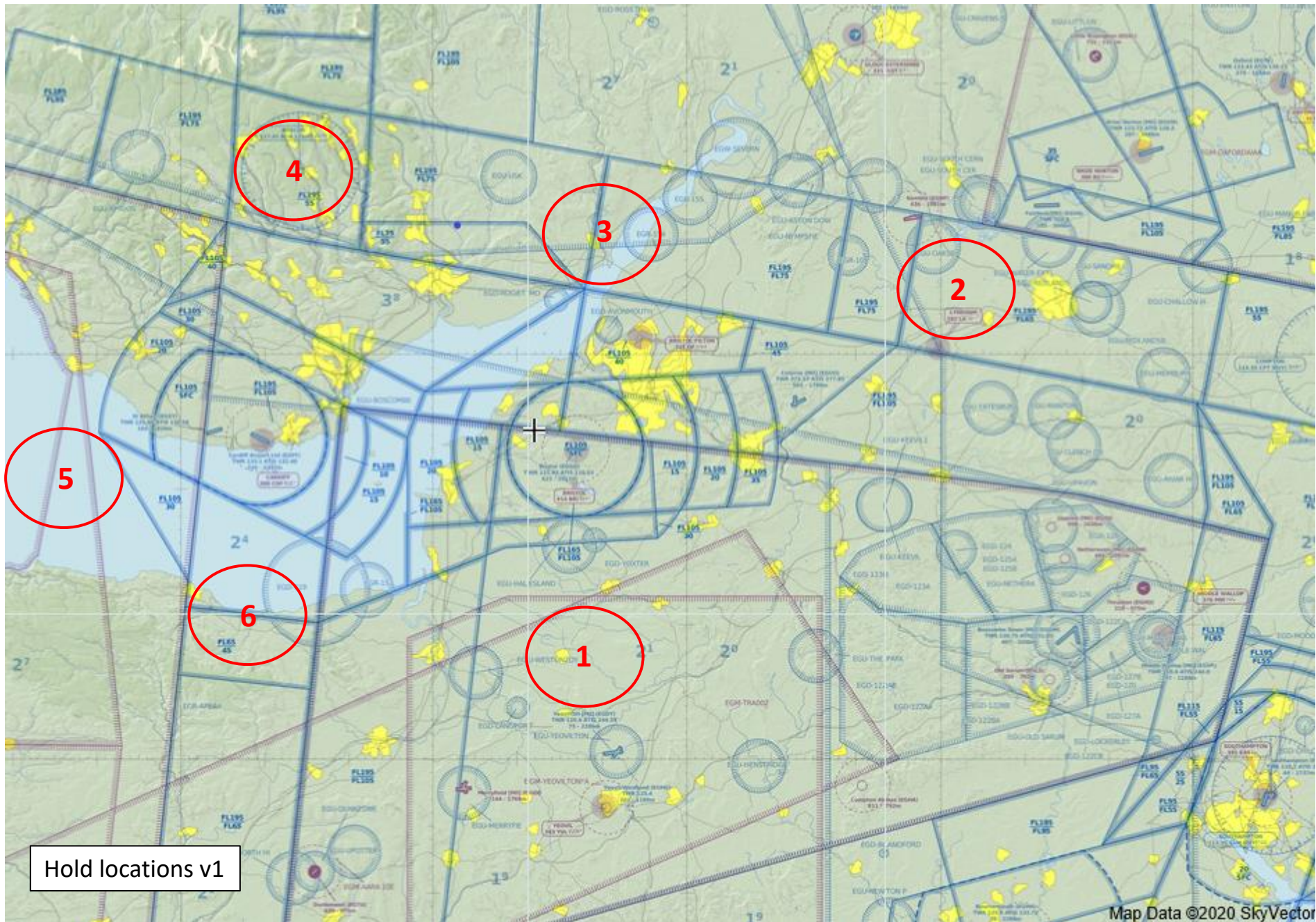
Removed 4, 6A & 8
Re-aligned 6
Query 3

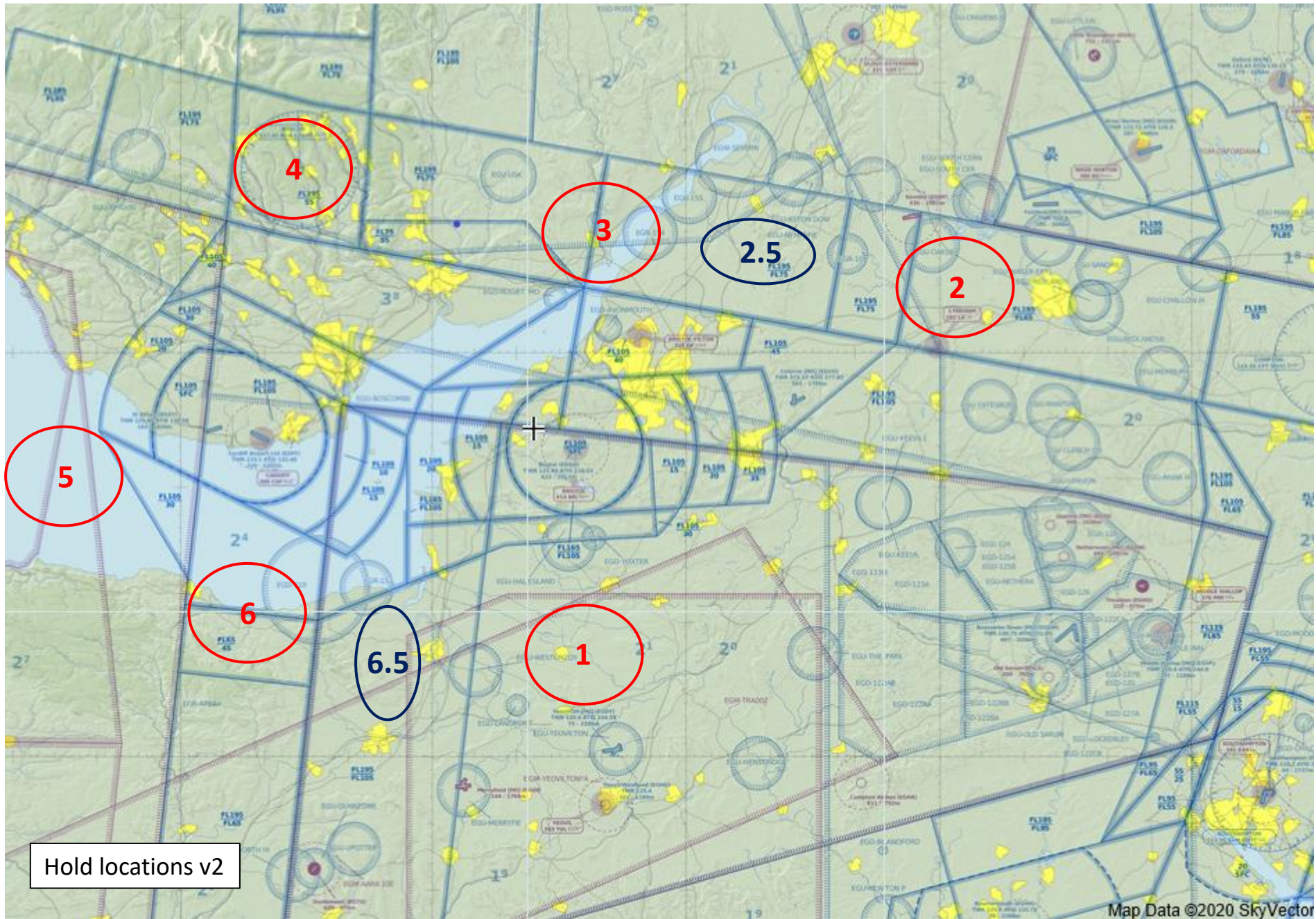


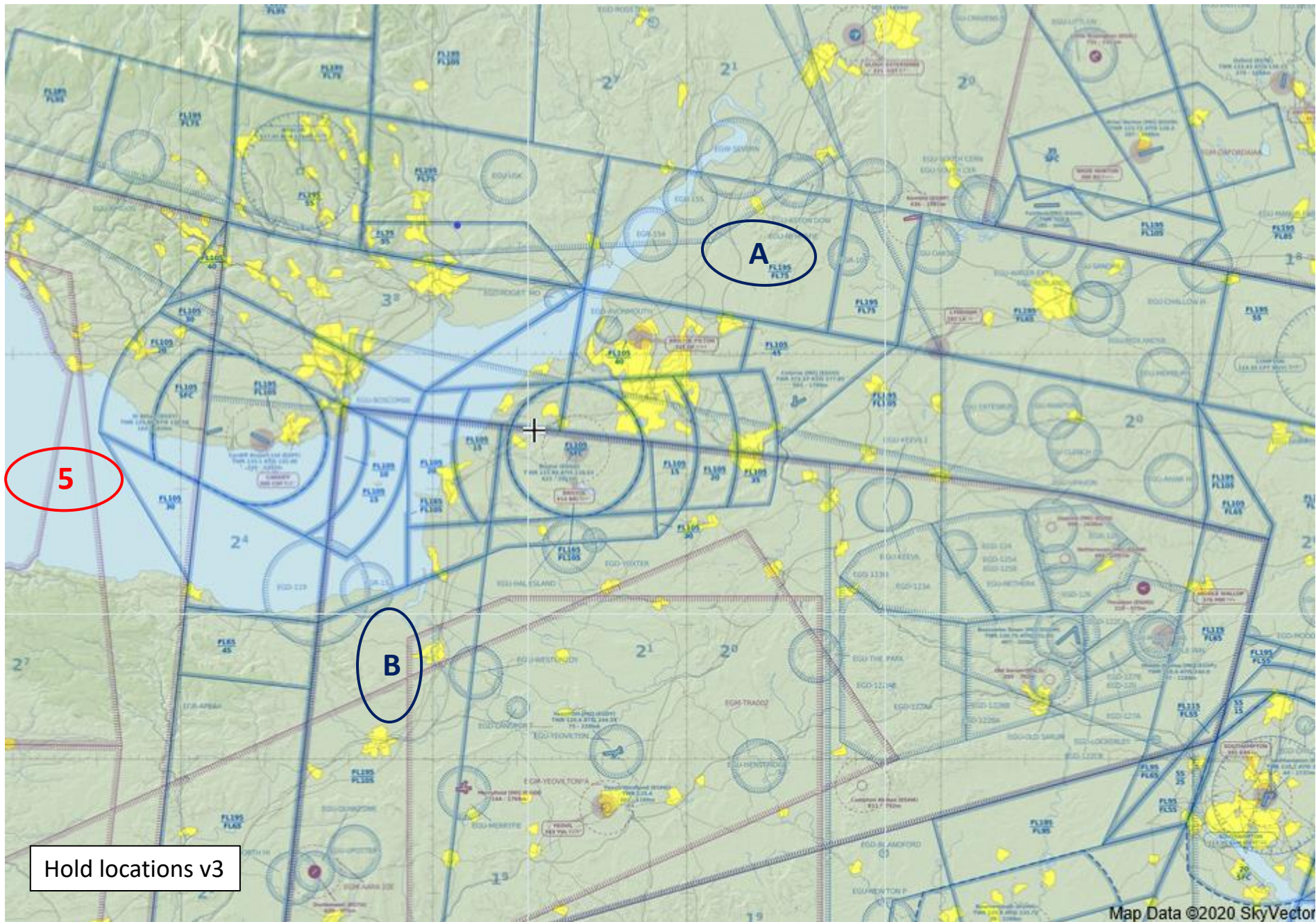


Runway 09 deps v2

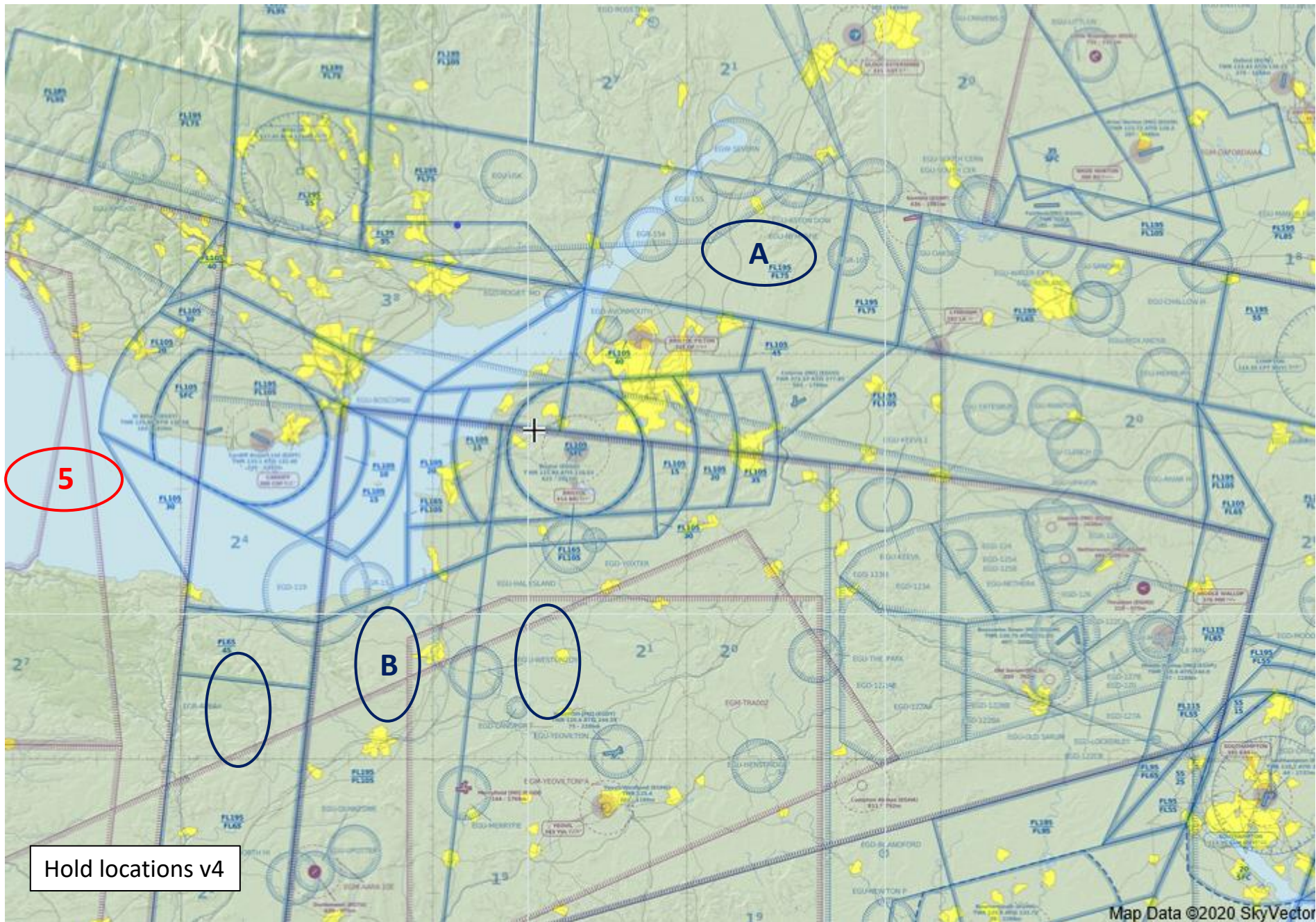
Removed 4, 4A & 8
Re-aligned 6
Query all dashed routes



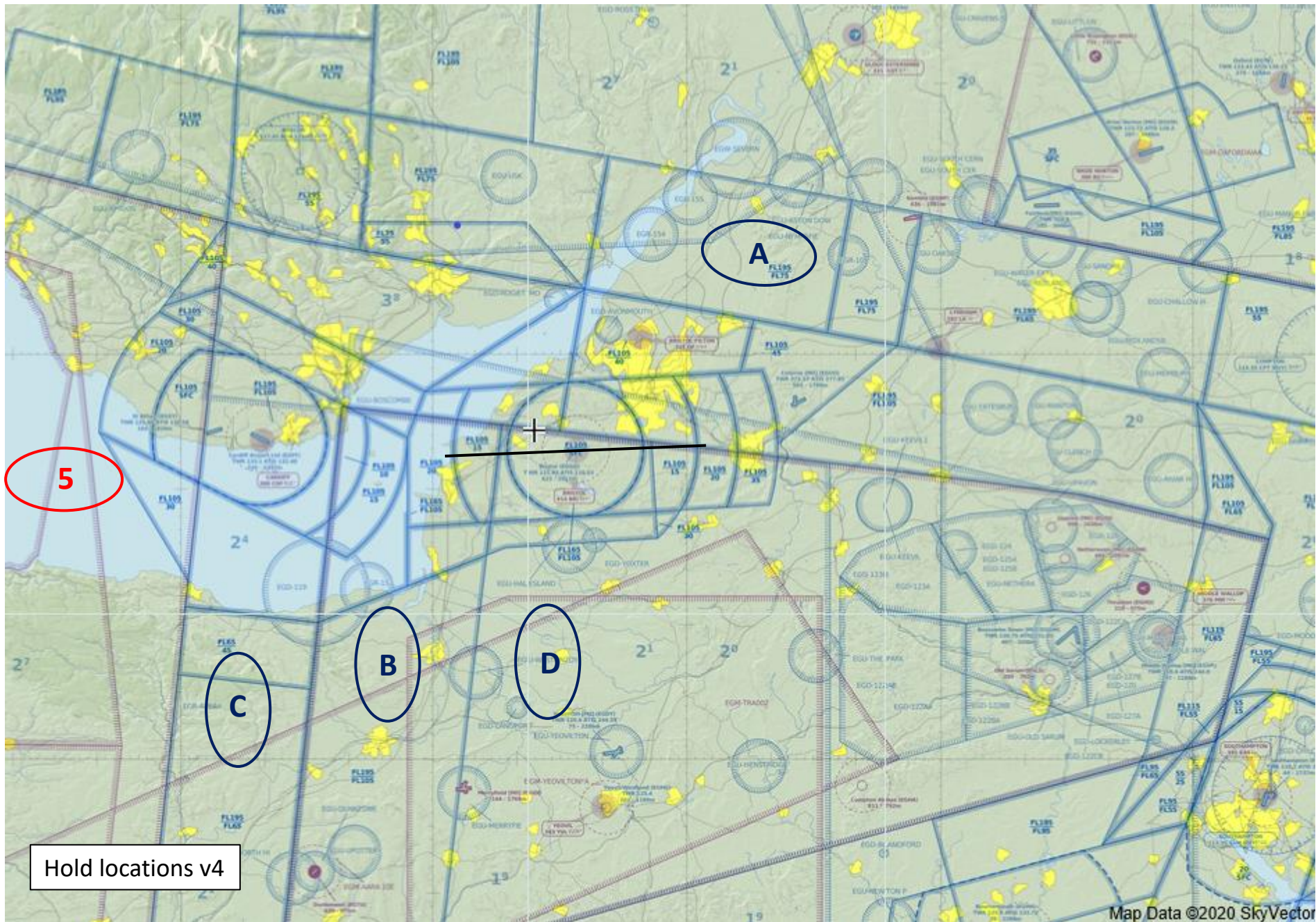




Hold locations v3

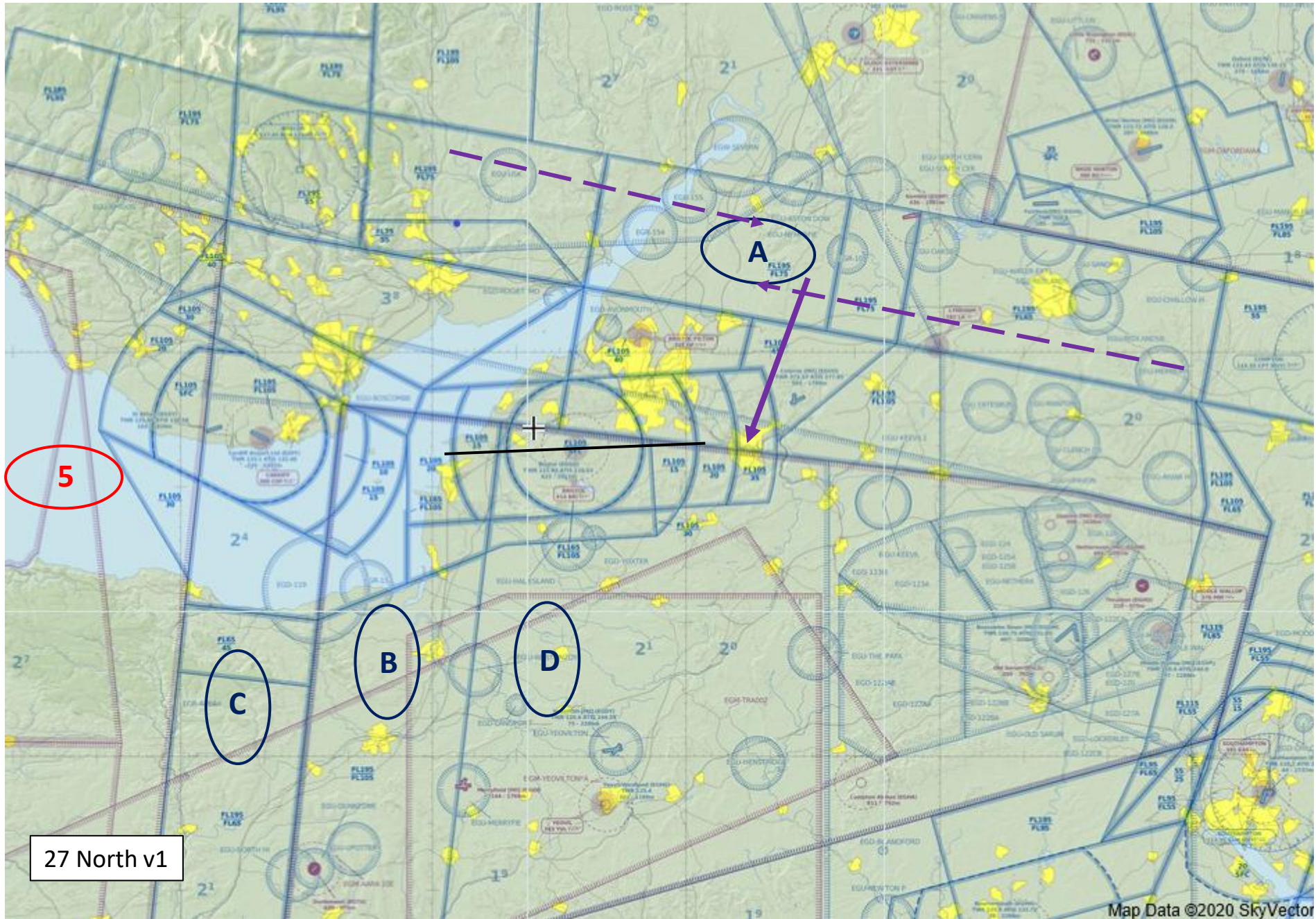


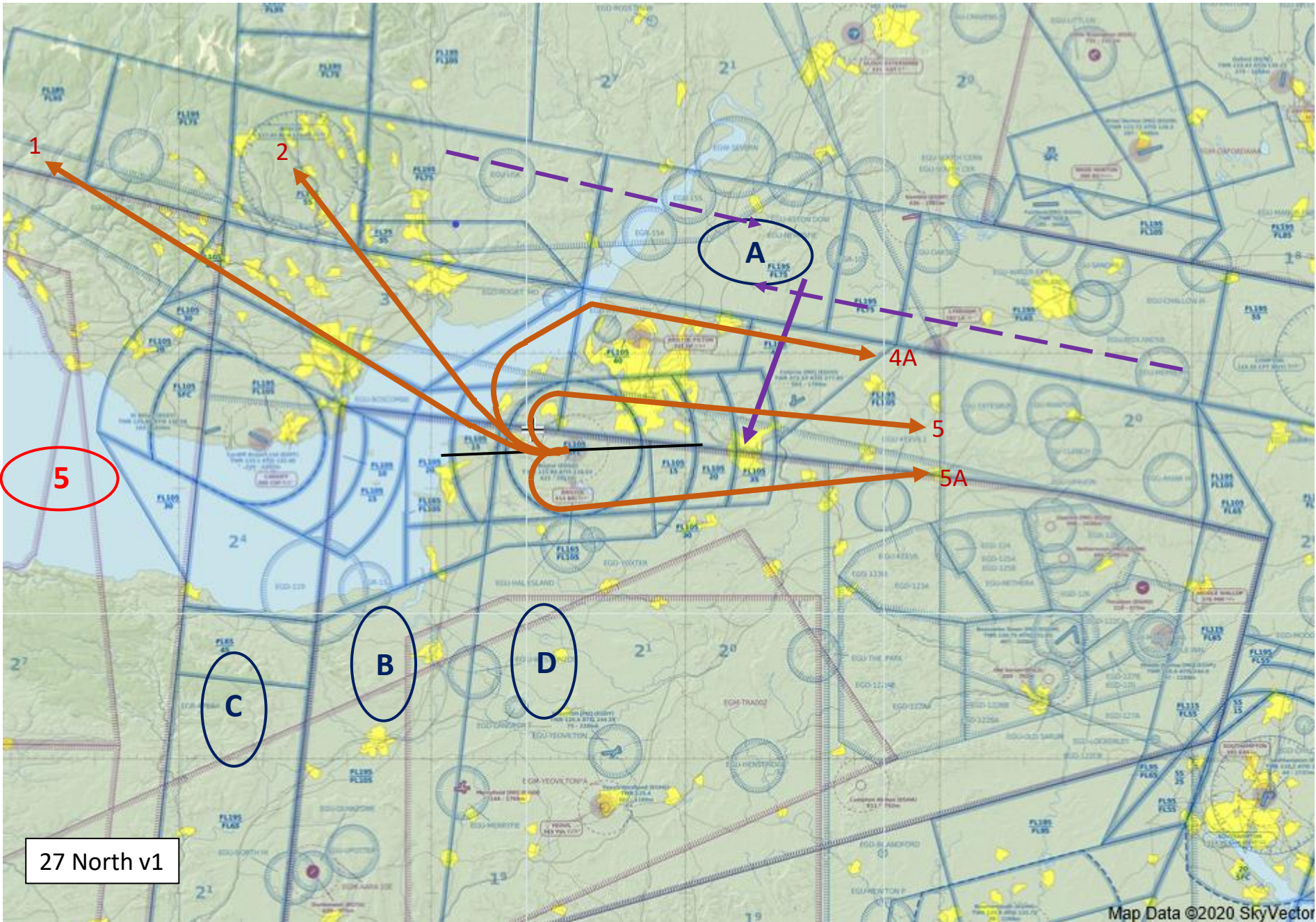
Hold locations v4

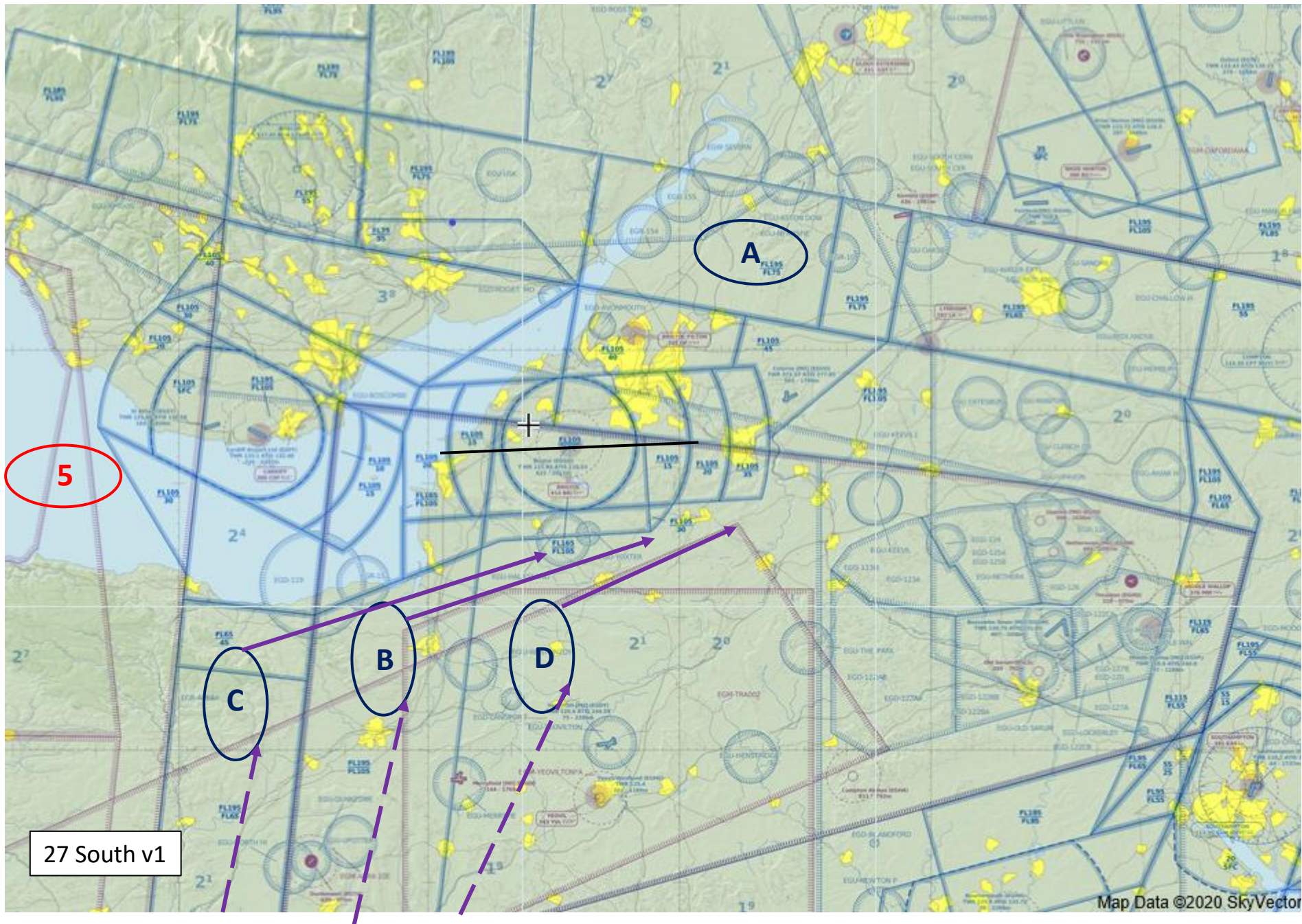


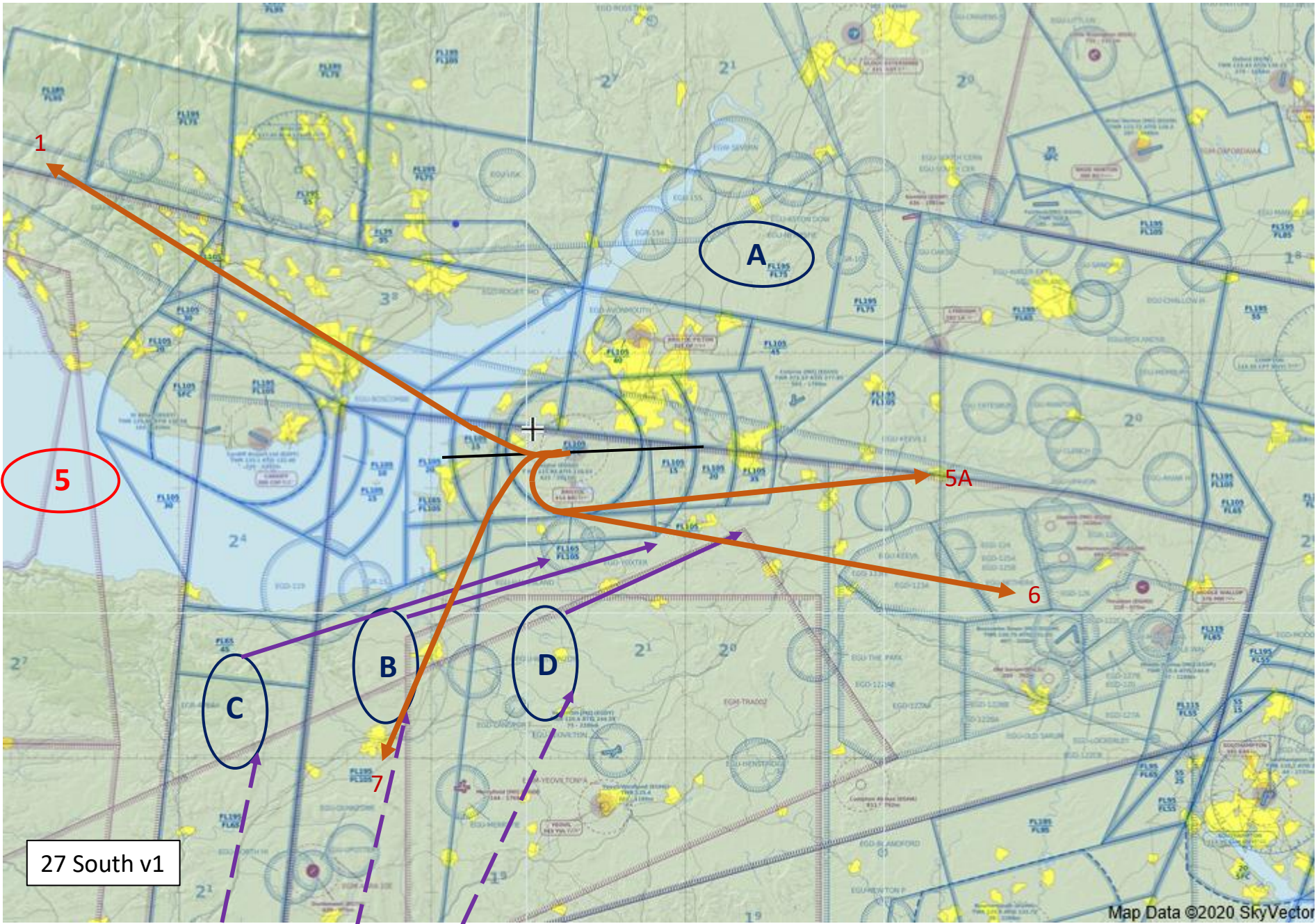
Hold locations v4

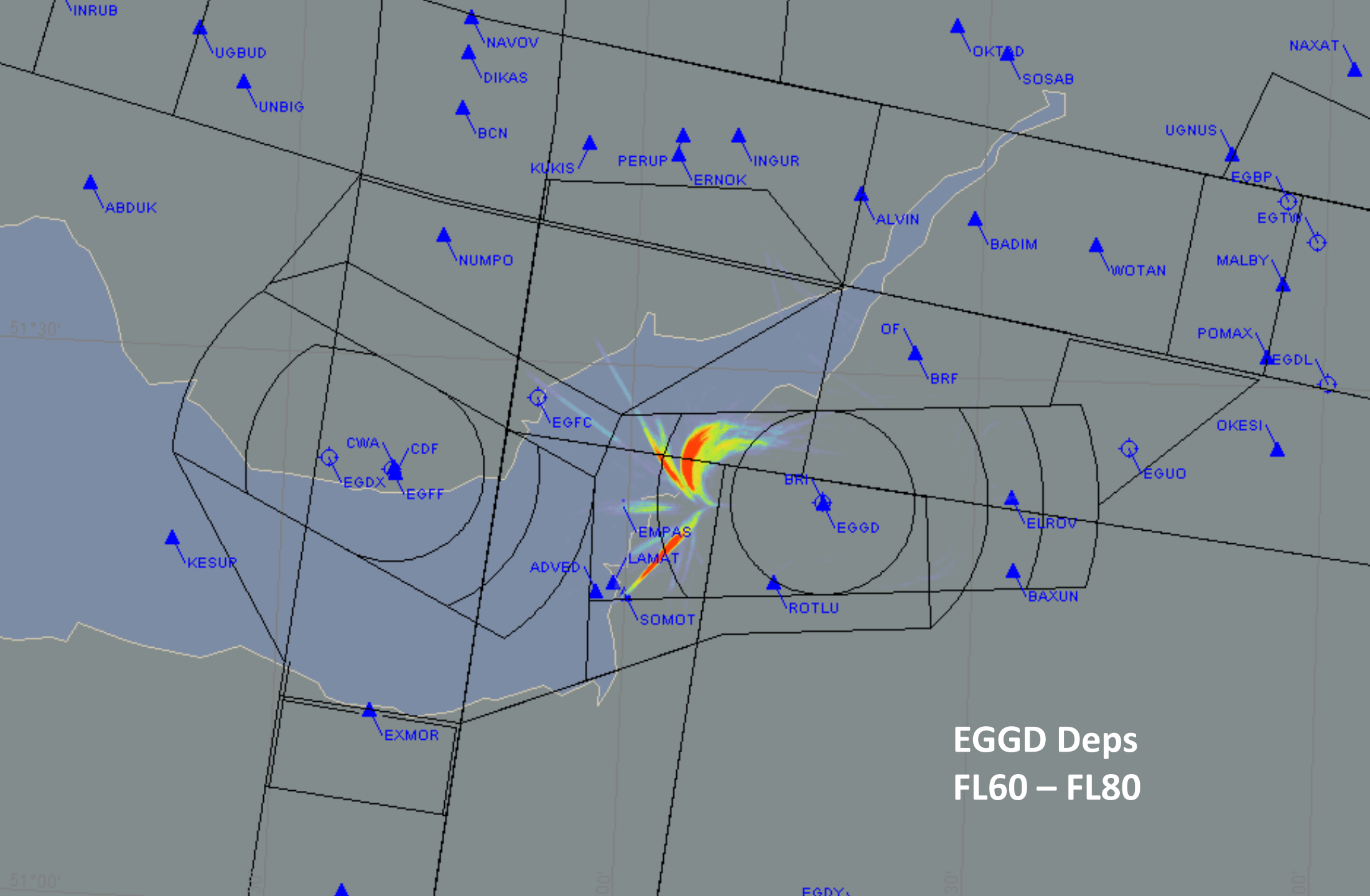
Runway 27 interactions

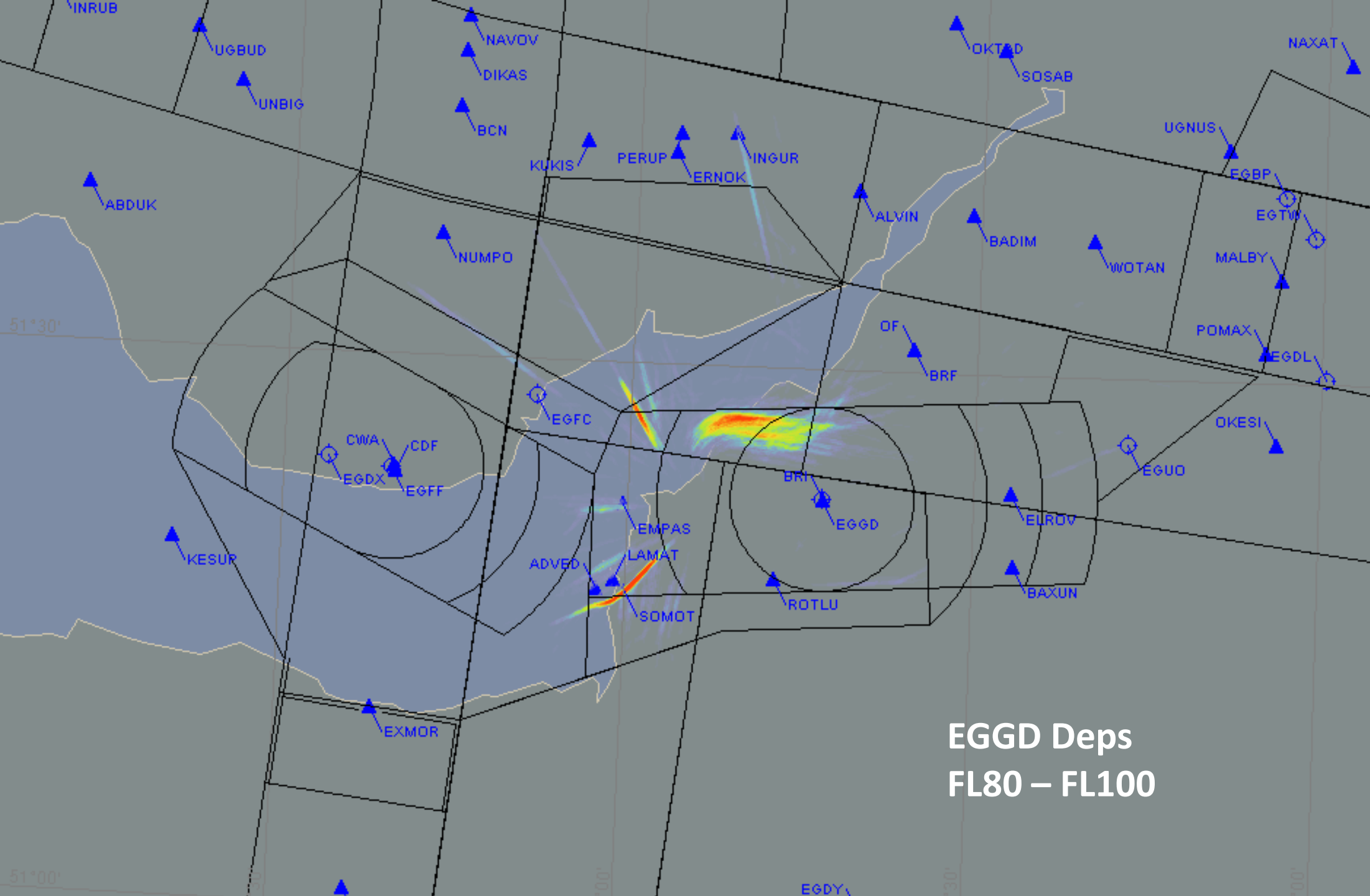








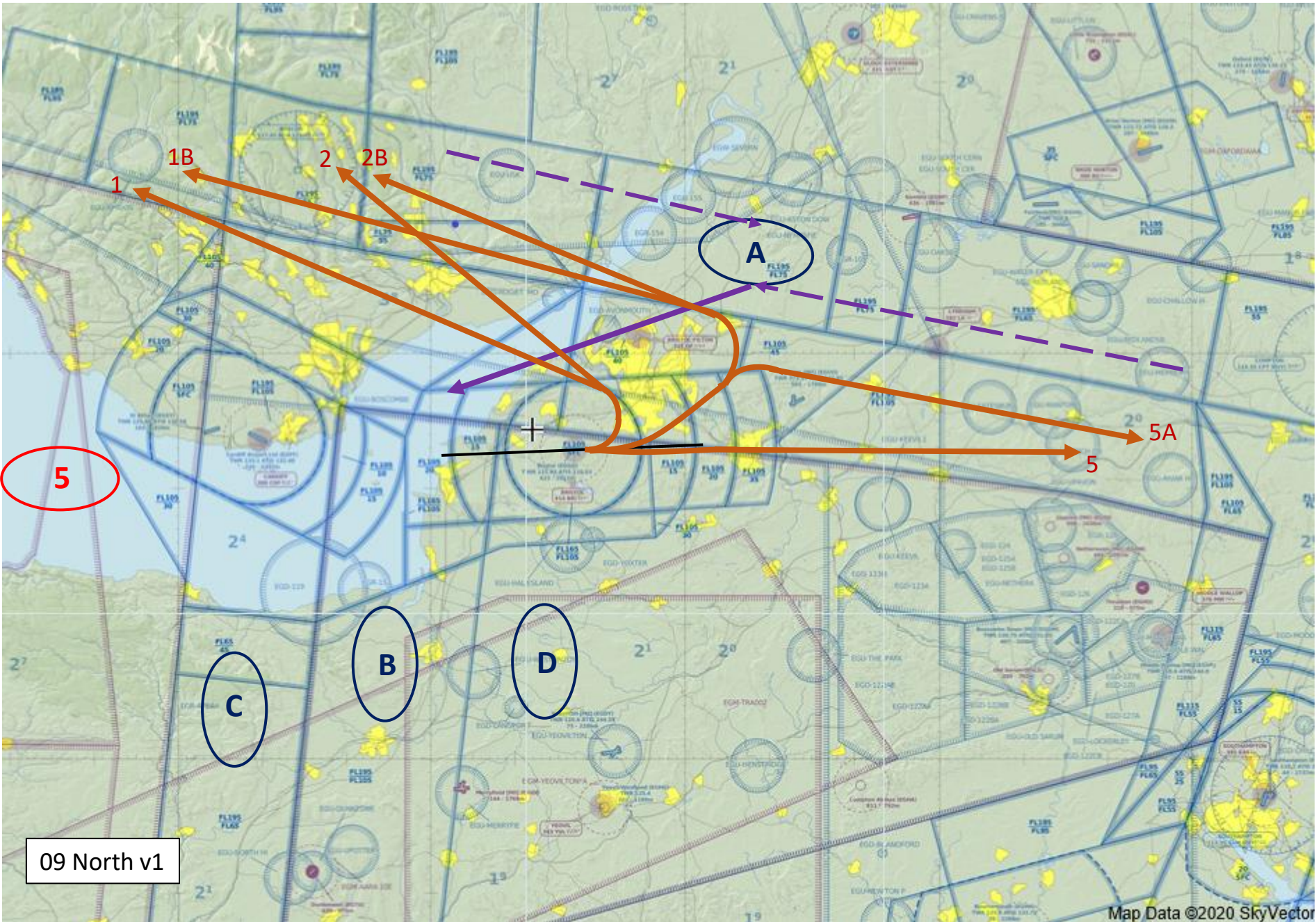




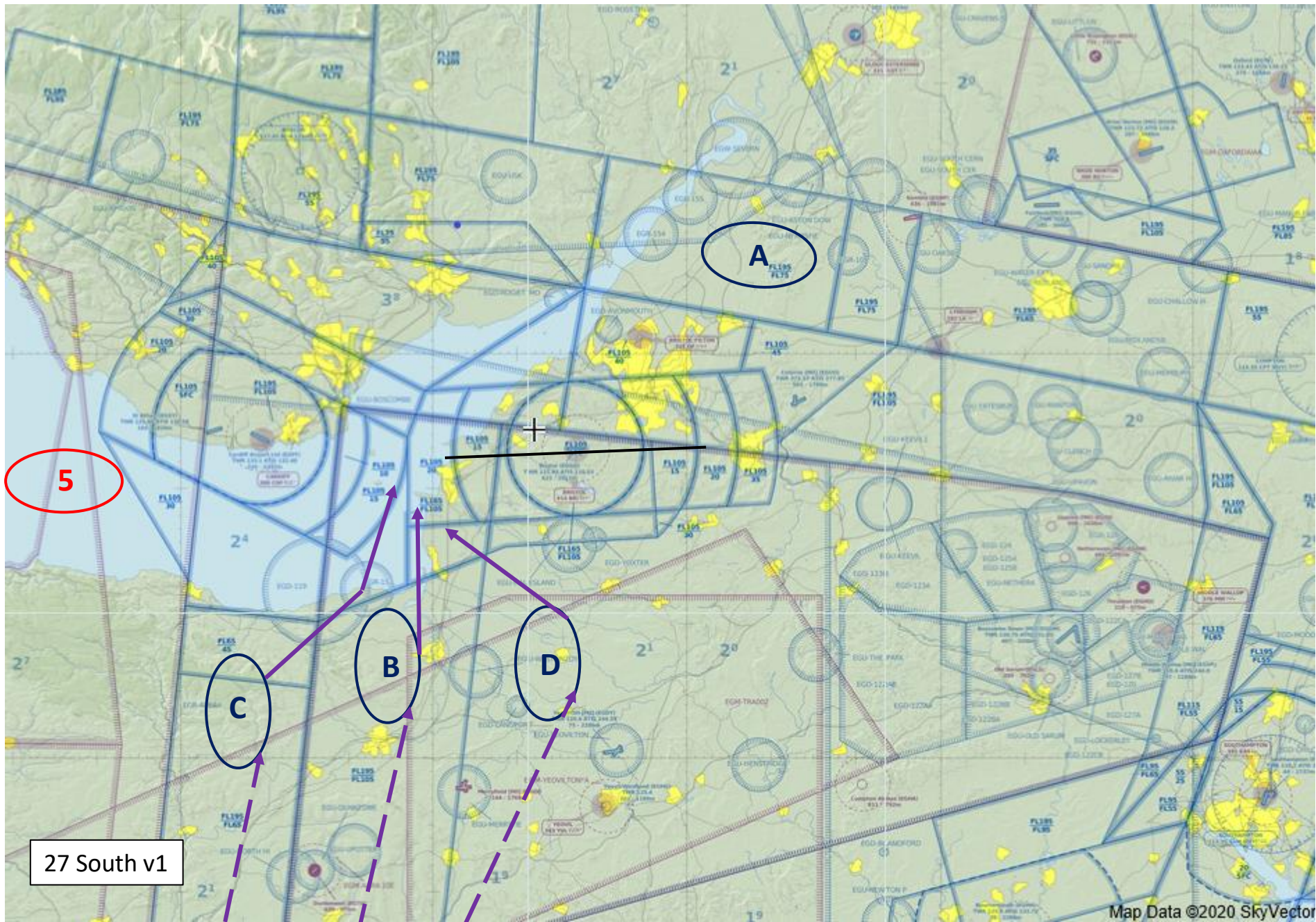
**EGGD Deps
FL80 - FL100**

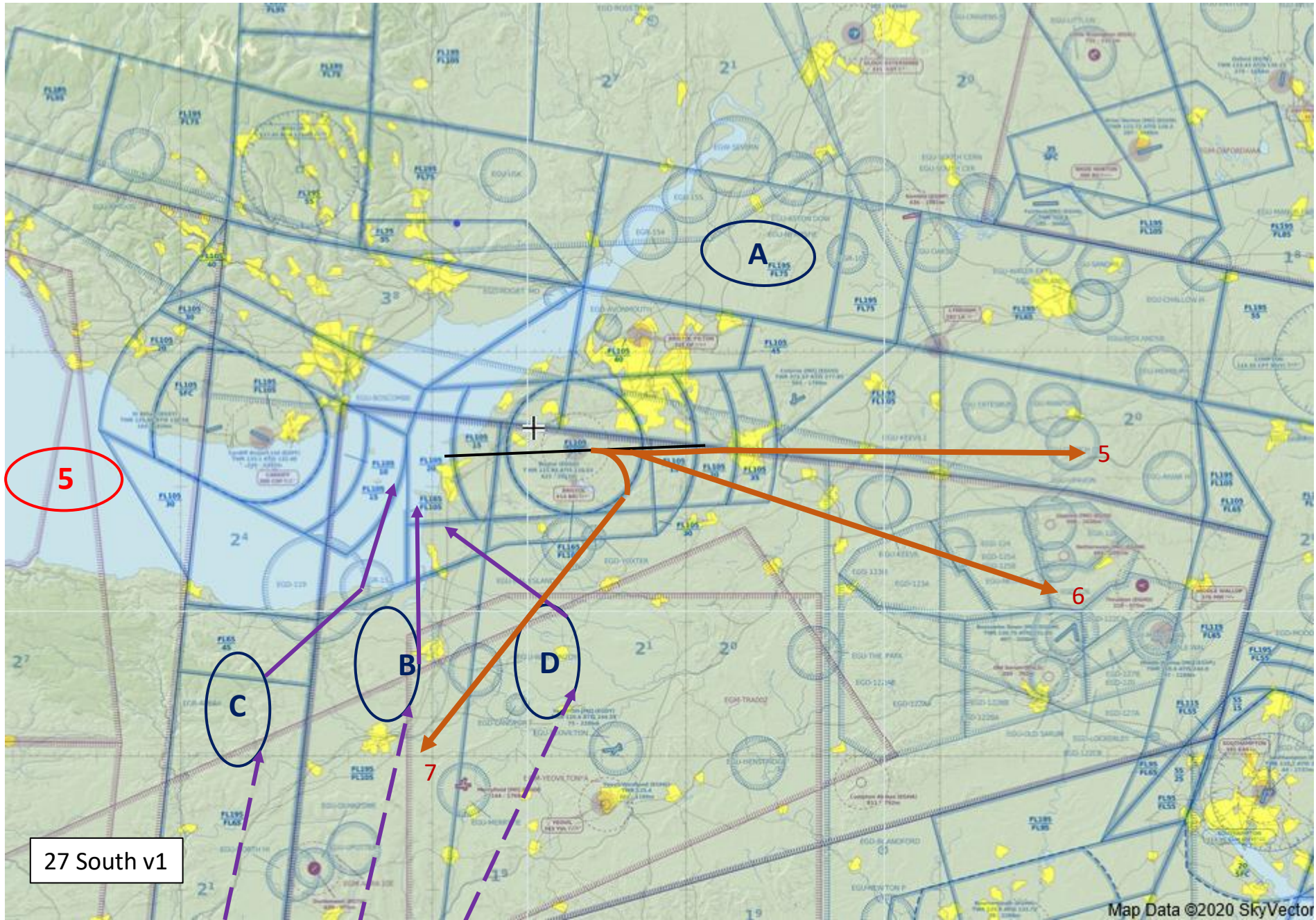
Runway 09





09 North v1





Bristol ACP High-Level Timeline

Stage 1 Define

Step 1A: Assessment Requirement
 Step 1B: Design Principles

Stage 2 Develop and Assess

Step 2A: Options Development
 Step 2B: Options Appraisal

Stage 3 Consult

Step 3A: Consultation Preparation
 Step 3B: Consultation Validation
 Step 3C: Commence Consultation
 Step 3D: Collate and Review Responses

Stage 4 Update and Submit

Step 4A: Update Design
 Step 4B: Submit Proposal to CAA

