



THE **GLIDING** CENTRE
HUSBANDS BOSWORTH

Husbands Bosworth Airfield

Statement of Need

2016 Was a Very Bad Year for Safety at Husbands Bosworth

- Three Airmissies involving Launching Cables

**AIRPROX REPORT No
2016074**

**AIRPROX REPORT No
2016125**

**AIRPROX REPORT No
2016182**

- A Fatal Mid Air Collision

AAIB Bulletin: 9/2017

G-CLJK and G-CSFC

EW/C2016/12/01

ACCIDENT

Aircraft Type and Registration:

- 1) SZD-51-1 'Junior' glider, G-CLJK
- 2) Cessna 150L, G-CSFC

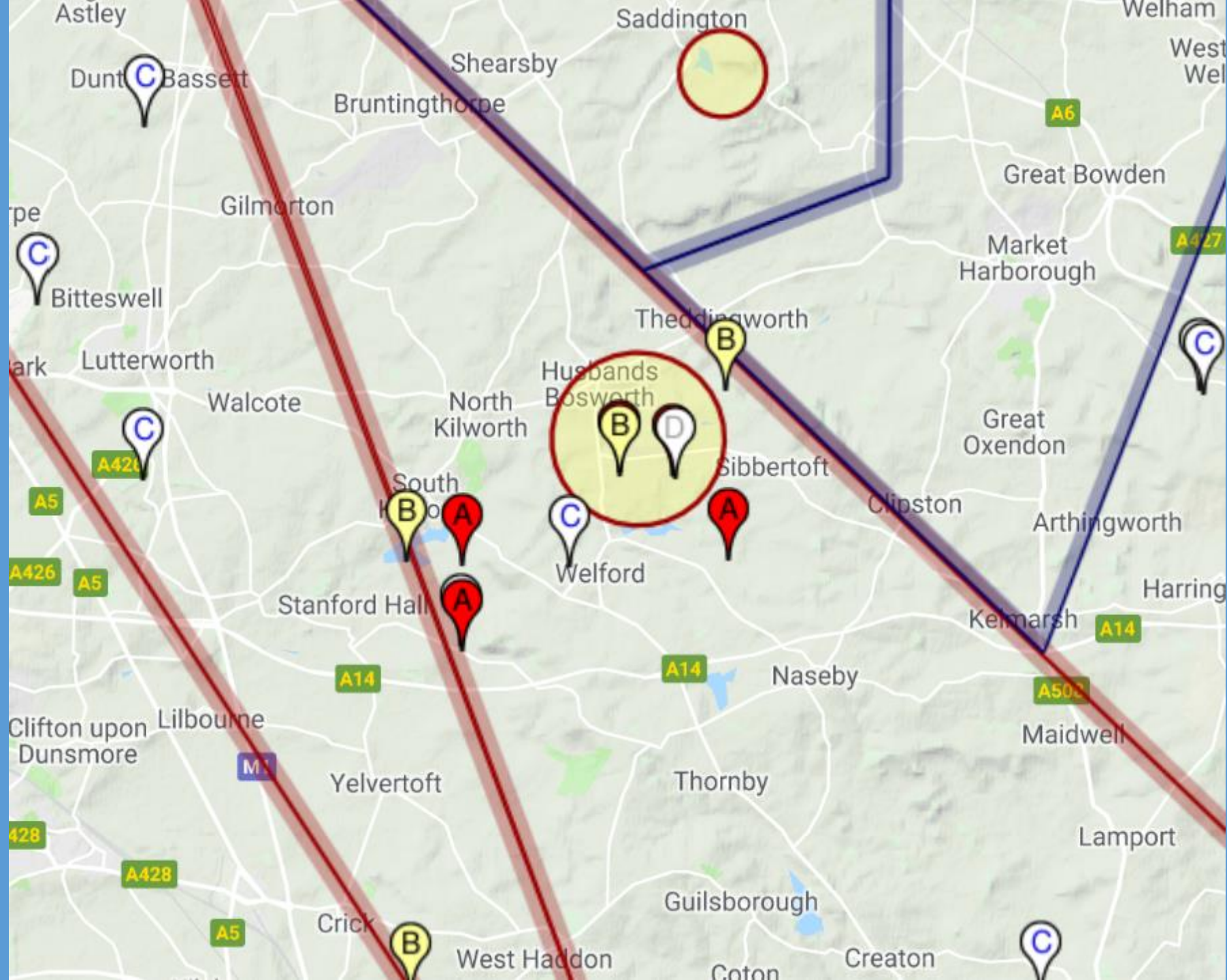
There have Been Many Airmissies in the Past

- AIRPROX REPORT No 2017108**

2012127	SZD51 Junior (Civ)	C182 (Civ)	G (Lon FIR)	A conflict in the vicinity of Husbands Bosworth glider launching site.	B	
2014145	Chipmunk & ASK21 (Civ Club)	SF25 Falke (Civ Club)	London FIR (G)	A late sighting by both pilots.	A	100
2010076	Pik-20D (CIV)	PA28 (CIV)	G	Effectively non-sightings by the pilots of both ac.	A	

There have been many more but unable to go back further. I had one back in 1983

Air Proxies
Years
2000 –
2018
Near
Husbands
Bosworth



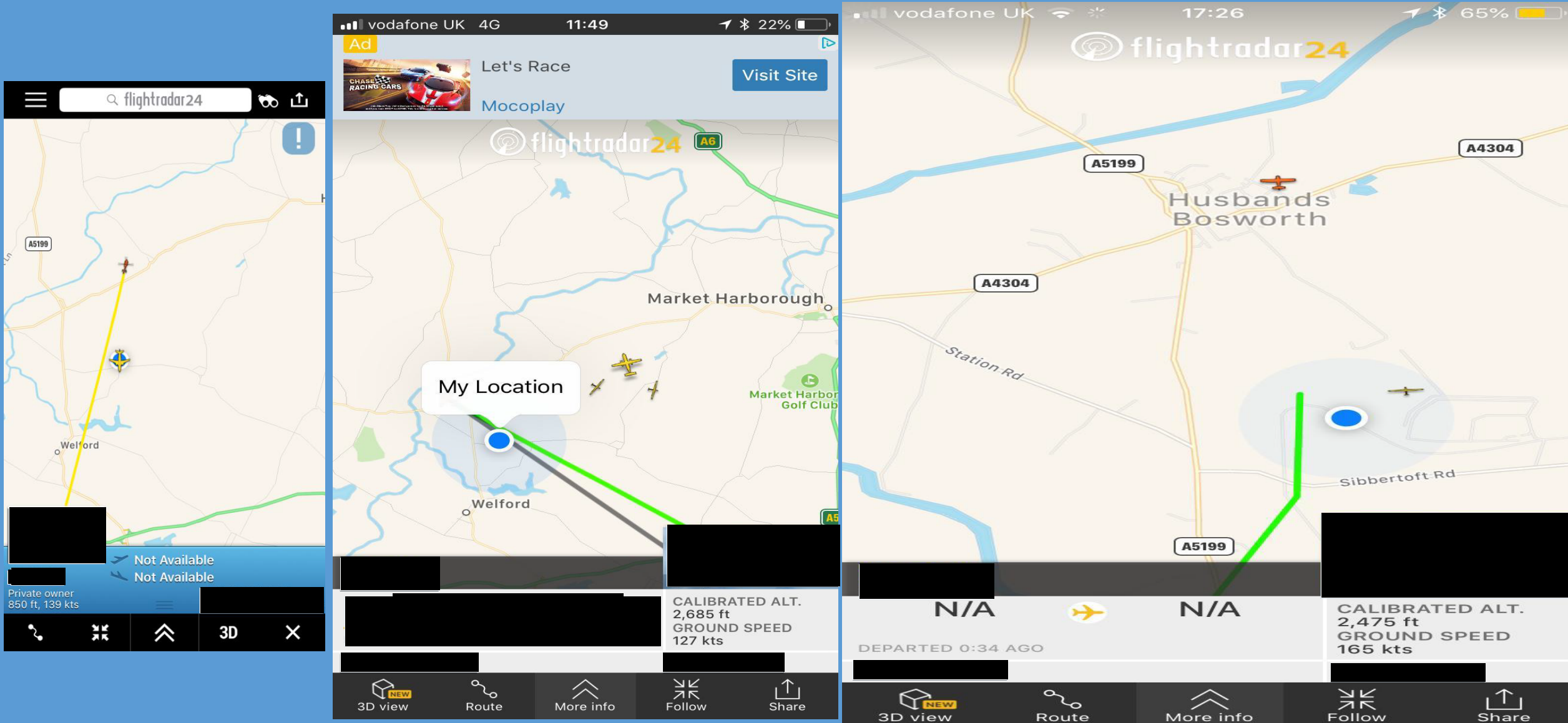
- Glider Pilots are use to having other gliders in close proximity. It has to be a Very close call before they file an Airprox.
- 99.9% of Gliders based at Husbands Bosworth have Radios
- We have our own Channel 127.580 Mhz
- 95% of Gliders based at Husbands Bosworth are FLARM equipped
- All Club Tow Planes, Gliders & Motor Glider are FLARM equipped

Just look at the ½ Mil Chart



It is very hard to see Cables /3.6 Do Power Pilots know what it means?

We are Still Getting Overflights



Gliding Club Movements

MOVEMENTS							
	2018	2017	2016	2015	2014	2013	2012
Winch Launches	5084	5342	4006	5624	4970	5402	7704
Aerotows	9892	10920	9020	12144	11196	7792	8464
Motor Glider	1148	913	907	1072	978	838	1104
Light Aircraft Movements	616	568	350	578	478	462	394
TOTALS	16740	17743	14283	19418	17622	14494	17666

Add 200 Movements a year by customers of Airmasters, Sulby Strip

Police Operation, Sulby Helipad

2016, 950 Movements

2017, 1568 Movements

2018, 1365 Movements

2015 & Prior 1000 per annum

Compared to Doncaster Sheffield Airport

Traffic statistics [\[edit \]](#)

Traffic statistics at Doncaster Sheffield^[2]

Year	Passengers handled	Passenger % change	Cargo (tonnes)	Cargo % change	Aircraft movements	Aircraft % change
2005	600,907	—	31	—	6,914	—
2006	900,067	▲49.8	167	▲438.7	10,642	▲53.9
2007	1,078,374	▲19.8	1,602	▲859.3	12,667	▲19.0
2008	968,481	▼10.2	1,350	▼15.7	13,066	▲3.1
2009	835,768	▼13.7	344	▼74.5	10,854	▼16.9
2010	876,153	▲4.8	216	▼37.2	11,030	▲1.6
2011	822,877	▼6.1	102	▼52.8	11,876	▲7.7
2012	693,661	▼15.7	276	▲170.6	11,724	▼1.3
2013	690,351	▼0.5	354	▲28.3	11,197	▼4.5
2014	724,885	▲5.0	858	▲142.4	11,697	▲4.5
2015	857,109	▲18.2	3,201	▲273.1	11,998	▲2.6
2016	1,255,907	▲46.5	9,341	▲191.8	16,098	▲34.2
2017	1,335,590	▲6.3	8,656	▼7.3	17,435	▲8.3

Source Wikipedia

Which has Class D Airspace

Issues

- Proposed airspace increases situational awareness among users
- Will need to liaise with other Aviation Stakeholders
- Unable to Provide an ATC Service
- Nil Environmental
- Nil Economic