



Wellesbourne Mountford Airport – Airspace Change ACP-2022-080

CAA Assessment Meeting – 6th March 2023

Agenda

- Introductions
- Background information
- Purpose
- Statement of Need
- Issues /Opportunities arising from Proposed change
- Options to exploit opportunities and address issues identified
- Provisional timescales

Introductions

Wellesbourne Mountford ACP Team

Background information

- Former WW2 airfield with ageing infrastructure
- Movement numbers are approximately 20,000 per annum
 - Fixed Wing – approximately 17,000 per annum
 - Helis – approximately 3,000 per annum
- Operational hours
 - 0900 to 1730 (or sunset +30 Minutes in winter)
- Situated in Class G airspace
 - Underneath Birmingham Class D (base level 3,500ft, dropping to 1,500ft 4nm N of Wellesbourne)
- Planning application to be submitted in Summer 2023 for redevelopment of the site to include newly orientated runway

Purpose

The purpose of this slide pack is to:

- Support the Airspace Change Stage 1 'Define' Assessment Meeting
- Outline some of the potential benefits Wellesbourne wishes to secure

This document should be read with reference to Wellesbourne Mountford Statement of Need.

This briefing pack has been produced with reference to CAP 1616 (4th edition) dated March 2021.

Statement of Need

<https://airspacechange.caa.co.uk/PublicProposalArea?plD=506>



Issues arising from Proposed change

- Subject to planning permission, single new runway of orientation 01/19
- Visual circuits will have to change slightly to align with the new RW orientation
- Removal of cross runway (05/23)
- Removal of runway 18/36

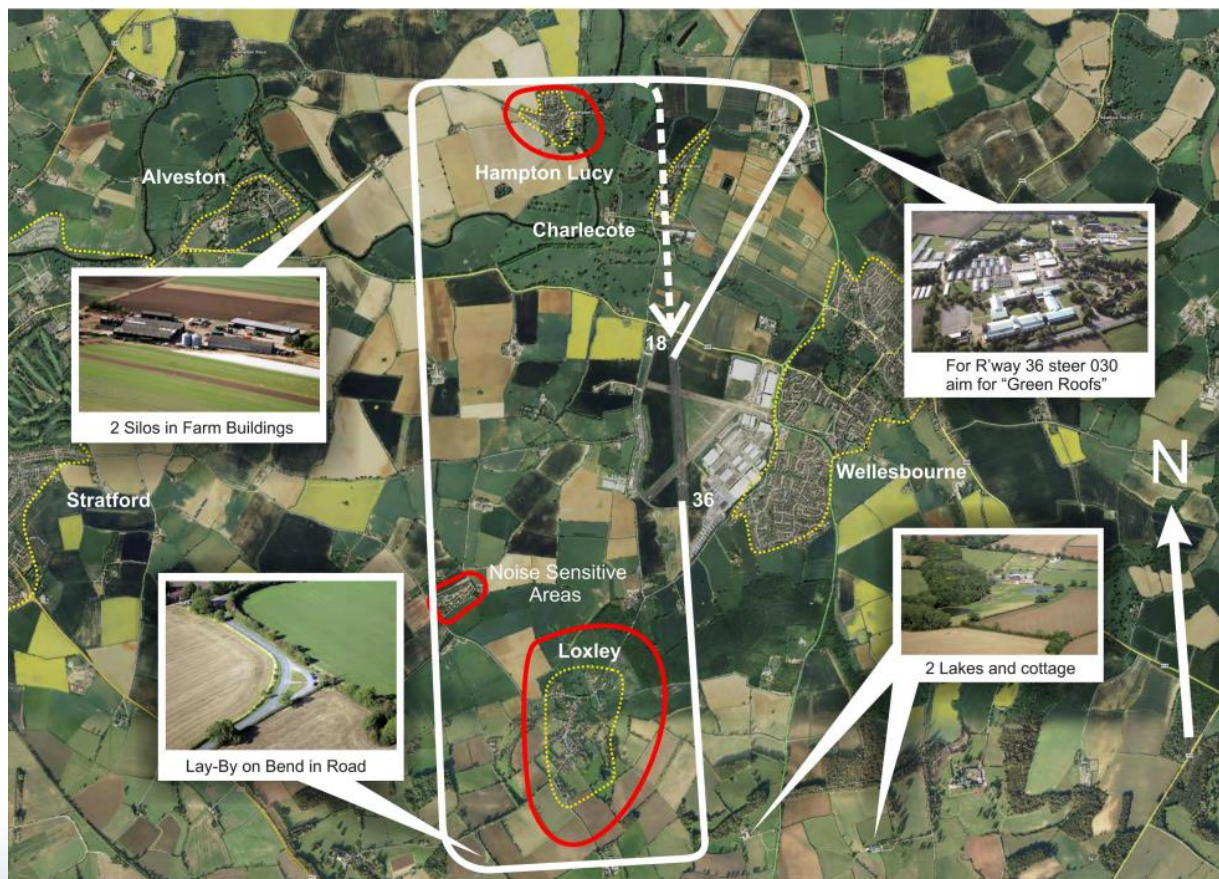


Aerial photograph showing position of market on the cross runway

Opportunities arising from Proposed change

- Cessation of all cross-runway activity
- New modern runway with anticipated life of circa 30 years
- New taxiway infrastructure
- New hangars and other airfield buildings
- Improved alignment to prevailing wind
- Enhanced airfield facilities (hangars, parking etc)
- New ATC control tower
- Secures long term future of the airfield

Existing Fixed Wing Visual Circuit- RW18/36



Wellesbourne Mountford airfield

Existing Helicopter Circuit – RW18/36

EGBW (Wellesbourne Mountford) Helicopter Visual Circuit - Runway 18/36



Wellesbourne Mountford Airfield

Existing Helicopter Circuit – RW 05/23



Wellesbourne Mountford Airfield

Provisional Timescales

- Stage 1 Define Gateway - 15 December 2023
- Stage 2 Develop & Assess Gateway - 26 April 2024
- Stage 3 Consult Gateway – 28 June 2024
- Formal ACP Submission - 25 October 2024
- Stage 5 (CAA Decide Gateway) – 25 April 2025
- [Target AIRAC](#) - 27 June 2025

Justification for reduction of Stage 3A and 3B

- No reduction to the 12-week consultation period.
- Reduction suggested is solely for preparation of consultation materials due to the minor nature of the change.
- Outside of the airfield boundary, changes will be kept to an absolute minimum.
- Existing noise abatement procedures will be retained, and new ones introduced, where appropriate.
- Overall reduction in impact due to closure of the cross runway.

Questions?

