

ACP-2023-006

Land's End ADS-B TMZ

Initial Assessment Meeting Presentation

27th March 2023



WELCOME & AGENDA

1. Introductions
2. Company Background
3. Airspace
4. Users / Stakeholders
5. Need
6. Equipment Install
7. Timeline
8. Environment, Traffic Levels & Noise



LAND'S END AIRPORT

Serving the Isles of Scilly



Established in 1937,
Land's End Airport serves
the Isles of Scilly.

Sister airline Company,
Isles of Scilly Skybus, has
been based at Land's
End Airport since 1984.



920 Freight flights
carrying 350 tonnes of
air freight annually.



Year-round Passenger,
Freight, Mail & NHS flights.

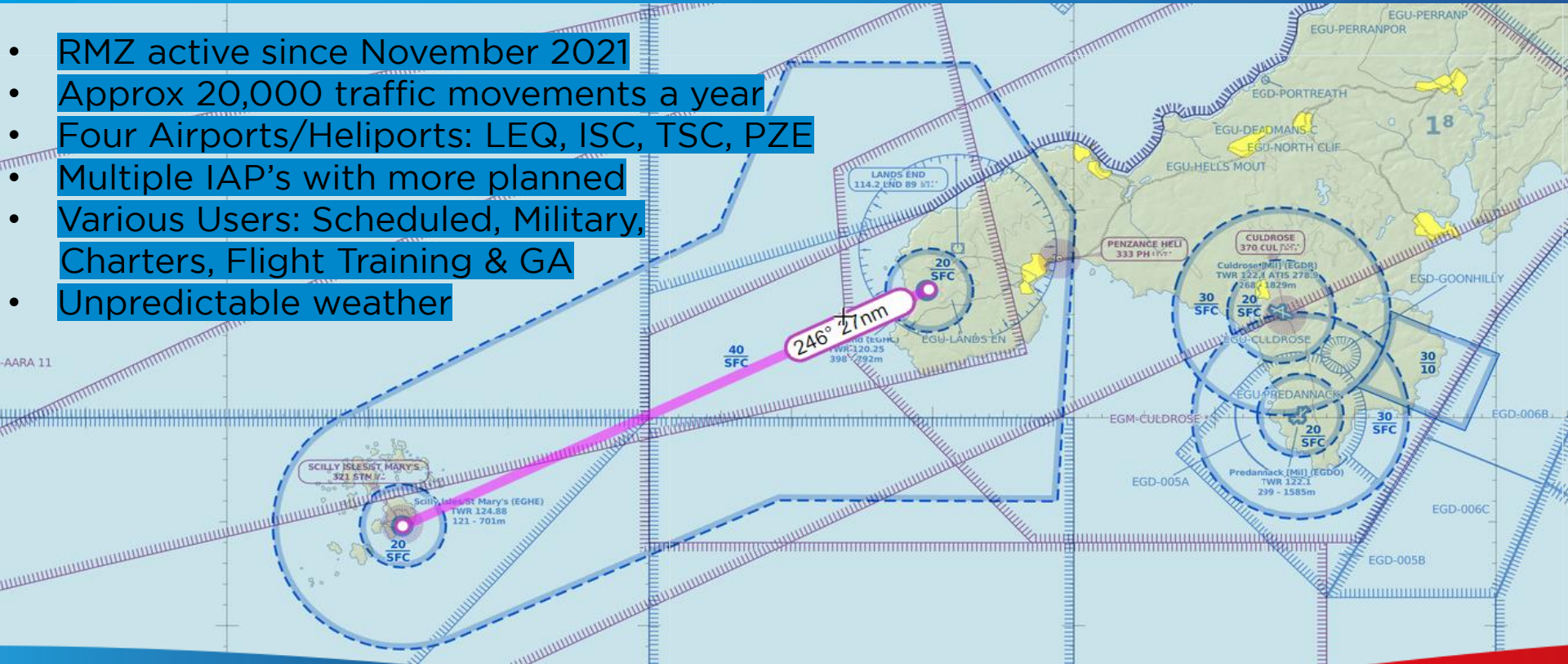


7,500 Passenger flights
and 65,000 passengers
from Lands End.
Plus seasonal flights from
Newquay & Exeter.



EXISTING AIRSPACE - RMZ

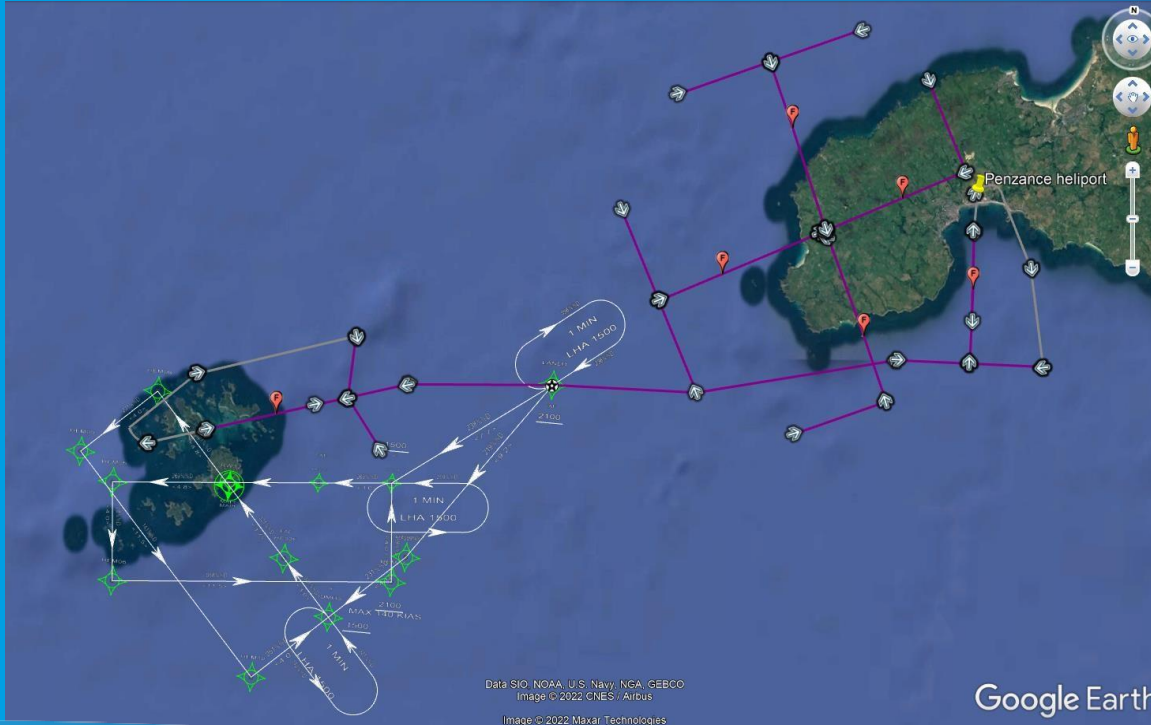
- RMZ active since November 2021
- Approx 20,000 traffic movements a year
- Four Airports/Heliports: LEQ, ISC, TSC, PZE
- Multiple IAP's with more planned
- Various Users: Scheduled, Military, Charters, Flight Training & GA
- Unpredictable weather



AIRSPACE ACTIVITY



Land's End
Airport
Skybus



- Current Land's End RNP Approaches
- Proposed St. Mary's RNP approaches
- Proposed Tresco and Penzance PinS approaches

AIRSPACE USERS



Skybus Twin Otters & Islanders

Trinity House EC135T2



Local & Visiting GA

Coastguard Sikorsky S92

PZ Helicopters AW139



ACP STAKEHOLDERS

- Skybus Twin Otters and Islanders
- Penzance Helicopters
- Coastguard helicopter
- Trinity House (PDG) helicopters
- Air Ambulance
- Flight schools (Perranporth, Newquay, Bodmin)
- Local and Scilly-based GA
- Royal Navy (RNAS Culdrose)
- Police helicopter
- Scenic flight helicopters

All contacted, with data collection underway on current ADS-B equipage, current feedback suggest a majority are already ADS-B 'Out' equipped.



WHY AN ADS-B TMZ?

- A TMZ was originally proposed as part of the RMZ application, however due to the lack of primary or secondary radar, an RMZ only was granted.
- The CAA recently (24th Nov 2022) published new regulations permitting the use of ADS-B based FIDs at ATC Units. Such use is seen as a key enabler of the CAA's Airspace Modernisation Strategy (AMS).
- With increasing use of ADS-B and technology available for aircraft and ground units, an ADS-B TMZ presents a solution without the use of primary or secondary radar (which has been shown as too costly for the Airport).
- With significant air traffic movements in a concentrated area around Land's End and the Isles of Scilly, an ADS-B TMZ would allow increased situational awareness for both ATC units and other aircraft equipped with ADS-B 'In' technology.
- An ADS-B TMZ will increase safety within the current RMZ and assist in preventing future traffic proximity related occurrences (especially in poor weather).
- ADS-B TMZ could also be used to facilitate future RPAS trials to the Islands.

PLANNED INFRASTRUCTURE FIT



Land's End Airport has joined a consortia of Airports, [REDACTED] for ADS-B Ground stations and FID displays [REDACTED]. This equipment acquisition would compliment this ADS-B TMZ ACP.



SKYBUS

Fleet of 4 Twin Otter and 3 Islander aircraft are being fitted with ADS-B 'In' and 'Out' during 2023.



LAND'S END AIRPORT

Dual ADS-B ground stations to provide ADS-B coverage of aircraft in the area. St. Mary's Airport also installing a ground station.

- Potential data connection between the two Airport systems to provide a combined Air Traffic picture in the RMZ/TMZ.

- [REDACTED]
- [REDACTED]
- [REDACTED]

PROVISIONAL ACP TIMELINE



- MAR 2023: Initial Assessment Meeting
- DEC 2023: Stage 1 Define Gateway
- JAN 2024: Stage 2 Develop & Assess Gateway
- FEB-APR 2024: Stage 3 Consult Gateway
- MAY 2024: Formal ACP Submission
- JUL 2024: Stage 5 CAA Decide Gateway
- 5TH JULY 2024: AIRAC 10/2024 - Target AIRAC
- 22ND AUG 2024: AIRAC Published
- 3RD OCT 2024: Effective Date

ENVIRONMENT, TRAFFIC LEVELS & NOISE

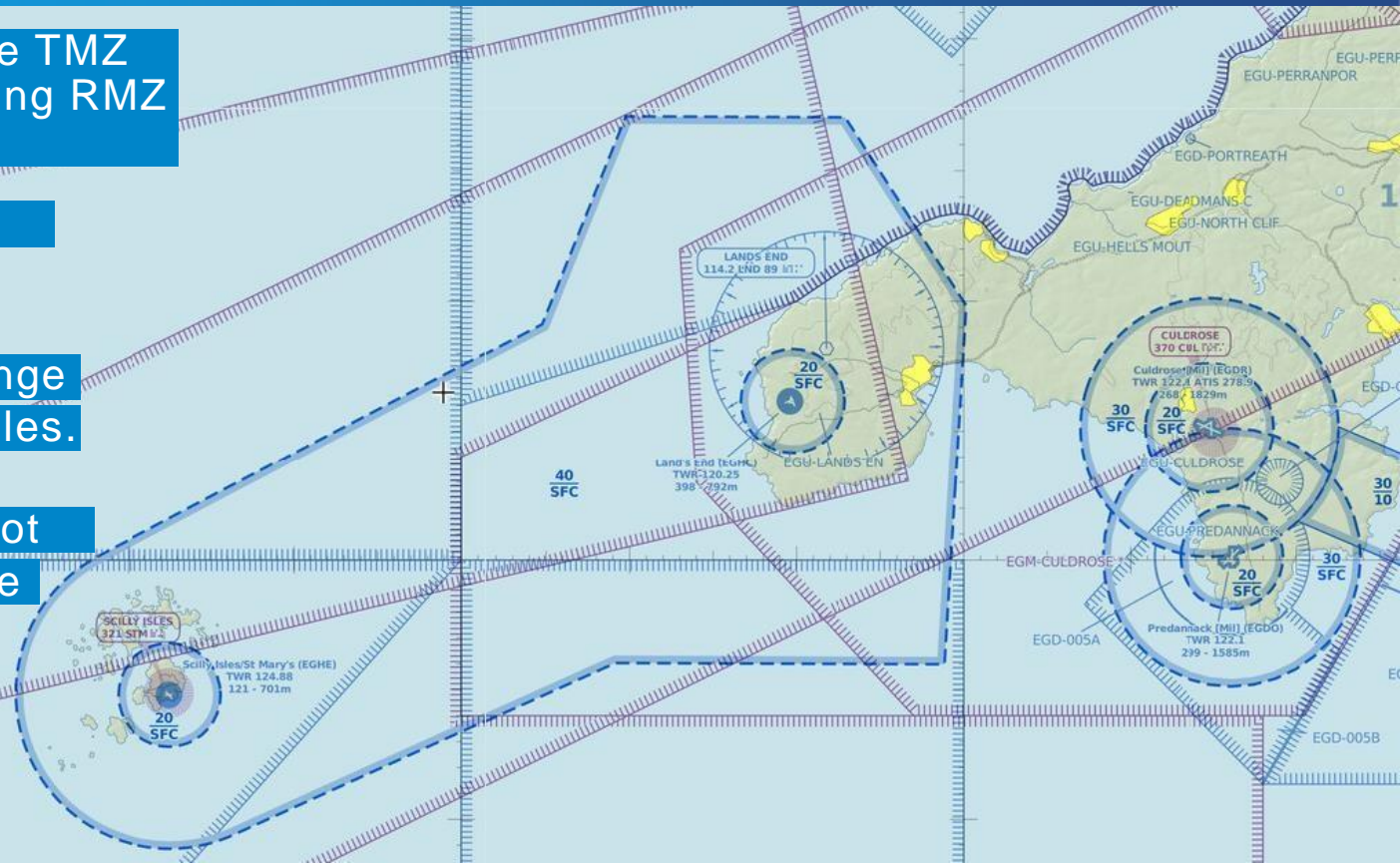


Land's End
Airport
Skybus

It is proposed that the TMZ will overlay the existing RMZ boundaries.

We do not expect any increase in current traffic numbers, or any change in existing flight profiles.

Additionally, we do not anticipate any change in noise impact



THANK YOU

