

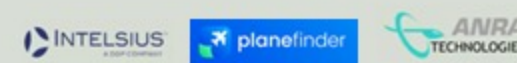
CAELUS2

NHS GRAMPIAN
ACP-2022-102
REVISED PROPOSAL
28 June 2024



CAELUS

 PROJECTCAELUS.CO.UK



Introduction

Dear Stakeholder,

You are receiving this pack because you or your organisation was previously engaged regarding Beyond Visual Line of Sight drone flights and associated with temporary Airspace Change Proposal [ACP-2022-102](#) planned as part of CAELUS2 Future Flight Challenge project.

We have revised our [proposal](#) further and would like to update you and seek feedback on the proposed changes. Even though we consider the changes minor and beneficial for the stakeholders, we want to ensure there are no changes from your side that would make our revised proposal not feasible. The four key updates relate to a) period of operations b) Daily Times of Operation c) Minor re-routing to limit impact on others airspace users and Easterton Gliding Site d) Minor changes to TDA segments altitudes for safety reasons.

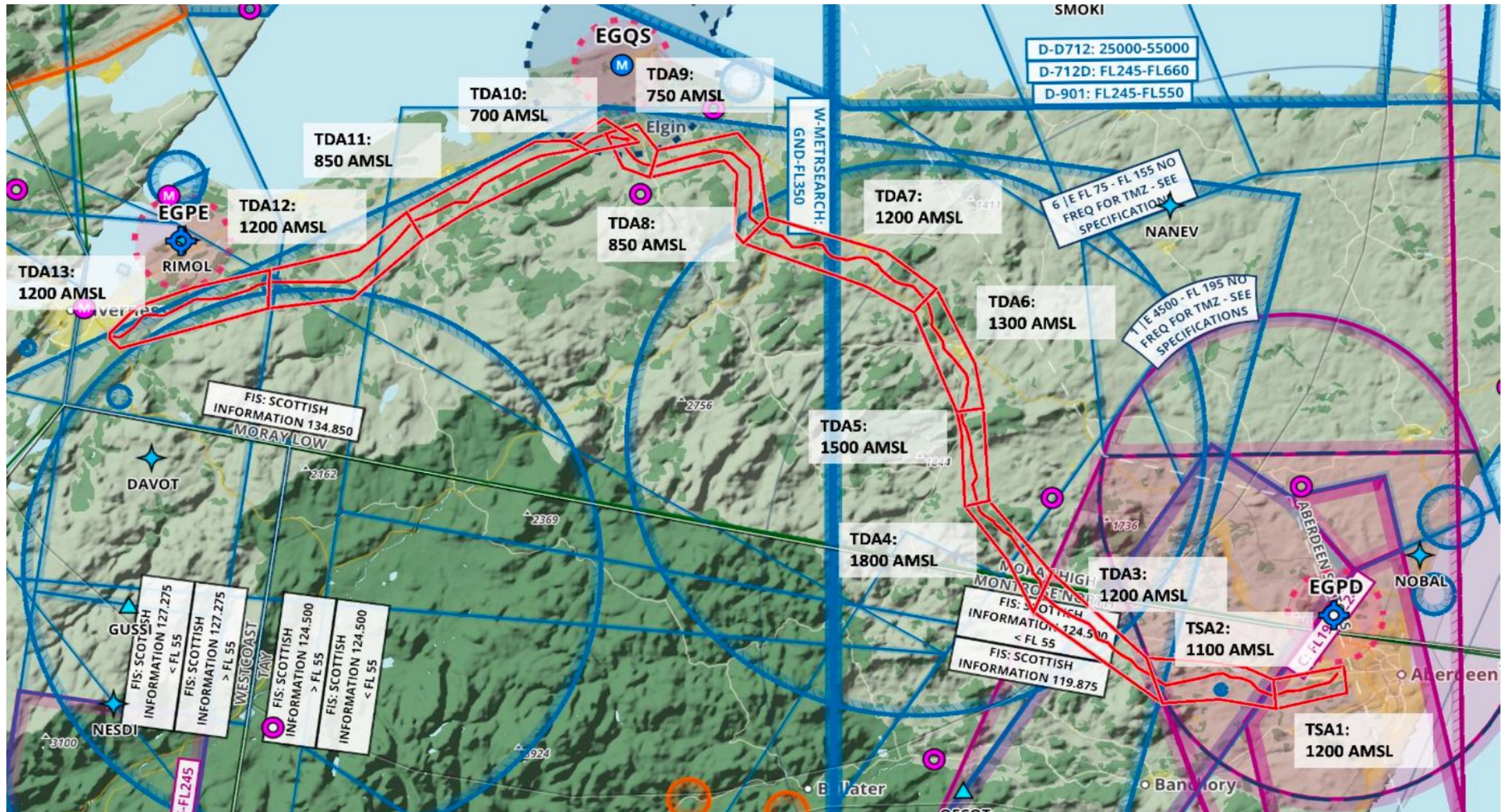
Given the requirements for various approvals (not just this ACP), we have experienced delays which mean these flights will no longer happen in the original 2024 timeframe. We are still looking only for 4 consecutive weeks of flying, but we would like to ask for any relevant feedback if those 4 weeks are to occur at some point between 1 September and 31 October 2024.

We will continue to update relevant information on the UK CAA [portal](#) as soon as it is known to us. Meanwhile, we would like to kindly ask to review this pack in full and get back to us by **replying to this email** (caelus2airspace@traxinternational.co.uk) **no later than 10 July 24** ensure we have enough time to address any concerns that might arise.

Best wishes,

Alex

Proposed TDA Routing





[Link for kml file:](#)

<https://www.dropbox.com/sc/fi/u05yuwhd4koeswz81xffd/N1-Final.kmz?rlkey=6ofdlnefty2hbwf0b1j3uthxy&dl=0>

N1 (GRAMPIAN) ROUTE

PROPOSED ROUTING	Aberdeen Royal Infirmary to Dr Grays Hospital (Elgin) Dr Grays Hospital (Elgin) to Raigmore Hospital (Inverness)
REQUIRED AIRSPACE AND DIMENSIONS	TSA + TDA: ~2-4 km wide along the route from surface to a maximum altitude of 1800ft AMSL from Aberdeen Royal Infirmary to Dr Grays Hospital, 750 ft AMSL in the immediate vicinity of RAF Lossiemouth and a maximum altitude of 1200ft between Dr Grays Hospital and Inverness Raigmore.
REQUIRED WINDOW OF OPPORTUNITY	20 Days flying between 1 Sept 24 and 31 Oct 24. 2 Flying windows (AM/PM) for 1-2 hours flying per day. 16 Days will be solely for Aberdeen to Elgin flights and 4 days solely for Elgin to Inverness.
ACTIVATIONS	Activation by NOTAM for short periods up to twice a day. The intention is to NOTAM the TDAs in separate shorter blocks to minimize the impact on other airspace users.

PROPOSED OPERATING TIMINGS

	Activation	COMMENTS
WEEK 1	Total of 3-4 Hours between 08:00 and 17:00	– 1 day per week only. Elgin to Inverness and return 0800-0930 Remaining 4 days per week . Elgin to Aberdeen between 0800-1000 Aberdeen to Elgin between 1500-1700
WEEK 2	Total of 3-4 Hours between 08:00 and 17:00	– 1 day per week only. Elgin to Inverness and return 0800-0930 Remaining 4 days per week . Elgin to Aberdeen between 0800-1000 Aberdeen to Elgin between 1500-1700
WEEK 3	Total of 3-4 Hours between 08:00 and 17:00	– 1 day per week only. Elgin to Inverness and return 0800-0930 Remaining 4 days per week . Elgin to Aberdeen between 0800-1000 Aberdeen to Elgin between 1500-1700
WEEK 4	Total of 3-4 Hours between 08:00 and 17:00	1 day per week only. Elgin to Inverness and return 0800-0930 Remaining 4 days per week . Elgin to Aberdeen between 0800-1000 Aberdeen to Elgin between 1500-1700
NOTE 1:		Activation periods described above are maximum durations and could be reduced on particular days if not operationally required.
NOTE 2:		Contact details for information as to the activation status of the TDAs will be promulgated via the AIC. Special Use Area Information Service will be available from a local ANSP.,
NOTE 3:		Skyports will promulgate the TDA activation times and contact details of the Flight Operations Team by NOTAM at least 24 hours before the planned use.

UAV AIRCRAFT

(THIS SLIDE REMAINS UNCHANGED FROM PREVIOUS ENGAGEMENT PHASE)



SWOOP KITE

TYPE: EVTOL

MTOW: 25 KG

PAYLOAD: 4 KG

CRUISE: 66 KTS IAS

TYPICAL ALT: 400 FT AGL

RANGE: 225 KM

How to Respond

ACP-2022-102

We would really appreciate if in your response to the original email thread with CAELUS2AIRSPACE@TRAXINTERNATIONAL.CO.UK you could confirm if:

- Any issues arise from the revised proposal that were not a problem in the original proposal.
- You organisation requires a detailed letter of agreement.

If you intend to respond – we kindly ask you to do so by COP 10 July 24



PRIMARY CONTACT



CAELUS2AIRSPACE@traxinternational.co.uk