

**Aberdeen International  
Airport**

# **Final Options Appraisal Technical Appendix**

ACP-2019-82

December 2024



## Document Navigation

**Aberdeen International  
Airport**



1. [WebTag Assessment Noise](#)
2. [WebTag Assessment Carbon](#)
3. [Noise Contour Data](#)
4. [Tranquility Data](#)
5. [Biodiversity Data](#)
6. [CO2 Data](#)
7. [Contour Images](#)

## WebTag Assessment Noise

Scenario	NPV total (£ 2010 prices)	NPV sleep (£ 2010 prices)	NPV amenity (£ 2010 prices)	NPV AMI (£ 2010 prices)	NPV stroke (£ 2010 prices)	NPV dementia (£ 2010 prices)	Individuals experiencing in forecast year...			
							Increased daytime noise	Reduced daytime noise	Increased night time noise	Reduced night time noise
Option A	-3082	-4156	852	0	89	133	47	27	0	19

## WebTag Assessment Carbon

Scenario	NPV of carbon dioxide equivalent emissions of proposal	Change in carbon dioxide equivalent emissions over 60 year appraisal period*	Of which Traded	Change in carbon dioxide equivalent emissions in opening year*	NPV of traded sector carbon dioxide equivalent emissions of proposal	Change in carbon dioxide equivalent emissions by carbon budget period:							Sensitivity analysis:		
						Carbon Budget 1 (Traded)	Carbon Budget 1 (Non-traded)	Carbon Budget 2 (Traded)	Carbon Budget 2 (Non-traded)_2	Carbon Budget 2 (Non-traded)	Carbon Budget 2 (Traded)_1	Carbon Budget 4 (Traded)	Carbon Budget 4 (Non-traded)	Lower Estimate NPV of Carbon dioxide Emissions of Proposal	Upper Estimate NPV of Carbon dioxide Emissions of Proposal
Option A	-£205	185.3	183.4	18.2	-£20,747	0	0	0	0	0	0	36.1	0.4	-£102	-£307

\*(tonnes - between 'with scheme' and 'without scheme' scenarios)

NPV = Net Present Value

## Noise Contour Data

Scenario: Do Nothing

Metric: LAEQ16HR

Year	Scenario	Metric	Contour	Area (km2)	Total population	Number of carehomes	Number of hospitals	Number of listed buildings	Number of places of worship	Number of schools
2022	DN	LAEQ16HR	51	53.9	30300	8	0	73	6	11
2022	DN	LAEQ16HR	54	17.5	8400	1	0	16	1	5
2022	DN	LAEQ16HR	57	7.2	3600	0	0	11	0	2
2022	DN	LAEQ16HR	60	3.6	800	0	0	4	0	1
2022	DN	LAEQ16HR	63	1.9	0	0	0	0	0	0
2026	DN	LAEQ16HR	51	56.4	33800	12	0	80	6	12
2026	DN	LAEQ16HR	54	19.1	10600	1	0	18	1	5
2026	DN	LAEQ16HR	57	8.1	4200	0	0	11	0	2
2026	DN	LAEQ16HR	60	4	1000	0	0	4	0	1
2026	DN	LAEQ16HR	63	2.1	0	0	0	0	0	0
2035	DN	LAEQ16HR	51	56.9	34400	12	0	80	6	12
2035	DN	LAEQ16HR	54	19.3	11000	1	0	18	1	5
2035	DN	LAEQ16HR	57	8.2	4200	0	0	11	0	2
2035	DN	LAEQ16HR	60	4	1100	0	0	4	0	1
2035	DN	LAEQ16HR	63	2.1	0	0	0	0	0	0

## Noise Contour Data

Scenario: Do Nothing

Metric: LAEQ8HR

Year	Scenario	Metric	Contour	Area (km2)	Total population	Number of carehomes	Number of hospitals	Number of listed buildings	Number of places of worship	Number of schools
2022	DN	LAEQ8HR	45	24.6	21400	3	0	27	4	8
2022	DN	LAEQ8HR	48	12.7	10000	1	0	17	1	5
2022	DN	LAEQ8HR	51	6.8	3800	0	0	8	0	2
2022	DN	LAEQ8HR	54	3.4	800	0	0	1	0	0
2022	DN	LAEQ8HR	55	2.8	400	0	0	0	0	0
2022	DN	LAEQ8HR	57	1.8	0	0	0	0	0	0
2026	DN	LAEQ8HR	45	28	26600	7	0	30	5	10
2026	DN	LAEQ8HR	48	14.7	12300	2	0	18	1	6
2026	DN	LAEQ8HR	51	8	5400	0	0	9	0	3
2026	DN	LAEQ8HR	54	4.1	1300	0	0	4	0	1
2026	DN	LAEQ8HR	55	3.3	700	0	0	0	0	0
2026	DN	LAEQ8HR	57	2.1	0	0	0	0	0	0
2035	DN	LAEQ8HR	45	28.6	27300	7	0	30	5	11
2035	DN	LAEQ8HR	48	15	12800	2	0	18	1	6
2035	DN	LAEQ8HR	51	8.2	5500	1	0	9	0	3
2035	DN	LAEQ8HR	54	4.2	1400	0	0	5	0	1
2035	DN	LAEQ8HR	55	3.4	900	0	0	0	0	0
2035	DN	LAEQ8HR	57	2.2	100	0	0	0	0	0

## Noise Contour Data

Scenario: Do Nothing

Metric: N60

Year	Scenario	Metric	Contour	Area (km2)	Total population	Number of carehomes	Number of hospitals	Number of listed buildings	Number of places of worship	Number of schools
2022	DN	N60	1	406.1	141200	30	1	547	44	53
2022	DN	N60	5	28	26800	4	0	37	5	8
2022	DN	N60	10	9.8	8600	1	0	11	1	3
2026	DN	N60	5	33.2	34000	5	0	38	7	11
2026	DN	N60	10	14.2	13200	1	0	19	1	4
2026	DN	N60	20	2.2	300	0	0	0	0	0
2035	DN	N60	5	34	35000	6	0	39	7	11
2035	DN	N60	10	14.9	13700	1	0	20	1	4
2035	DN	N60	20	2.7	300	0	0	0	0	0

## Noise Contour Data

Scenario: Do Nothing

Metric: N65

Year	Scenario	Metric	Contour	Area (km2)	Total population	Number of carehomes	Number of hospitals	Number of listed buildings	Number of places of worship	Number of schools
2022	DN	N65	1	1121.2	185600	36	1	794	59	69
2022	DN	N65	5	558.2	107000	25	0	285	31	39
2022	DN	N65	10	217.6	81600	20	0	132	20	26
2022	DN	N65	20	56	46000	13	0	76	12	15
2022	DN	N65	50	12.2	7700	0	0	17	1	2
2022	DN	N65	100	2.9	200	0	0	0	0	0
2026	DN	N65	5	565.7	111000	26	0	306	32	41
2026	DN	N65	10	222.4	86900	20	0	152	22	28
2026	DN	N65	20	60.8	52400	14	0	84	16	15
2026	DN	N65	50	15.2	11500	0	0	18	1	5
2026	DN	N65	100	4.6	1100	0	0	4	0	0
2035	DN	N65	5	567.1	112300	26	0	308	32	41
2035	DN	N65	10	223.1	88000	22	0	155	22	29
2035	DN	N65	20	61.5	52800	14	0	84	16	15
2035	DN	N65	50	15.6	12100	1	0	18	1	5
2035	DN	N65	100	5	1500	0	0	5	0	0



## Noise Contour Data

Scenario: Do Nothing

Metric: Overflights\_24hr

Year	Scenario	Metric	Contour	Area (km2)	Total population	Number of carehomes	Number of hospitals	Number of listed buildings	Number of places of worship	Number of schools
2022	DN	Overflights_24hr	1	1803.2	275600	61	1	1981	115	115
2022	DN	Overflights_24hr	5	563.7	127800	26	0	424	39	55
2022	DN	Overflights_24hr	10	122.9	45400	11	0	135	14	20
2022	DN	Overflights_24hr	20	33.6	14300	2	0	63	4	6
2026	DN	Overflights_24hr	5	736.1	156200	35	0	521	51	65
2026	DN	Overflights_24hr	10	176.2	59800	16	0	211	18	24
2026	DN	Overflights_24hr	20	44.3	18800	6	0	68	6	8
2026	DN	Overflights_24hr	50	0.1	0	0	0	0	0	0
2035	DN	Overflights_24hr	5	760.5	159500	36	0	534	53	66
2035	DN	Overflights_24hr	10	186.8	63600	16	0	224	18	26
2035	DN	Overflights_24hr	20	45.8	19800	6	0	72	6	8
2035	DN	Overflights_24hr	50	0.4	0	0	0	0	0	0

## Noise Contour Data

Scenario: DS\_OptA

Metric: LAEQ16HR

Year	Scenario	Metric	Contour	Area (km2)	Total population	Number of carehomes	Number of hospitals	Number of listed buildings	Number of places of worship	Number of schools
2026	DS_OptA	LAEQ16HR	51	56.5	33800	12	0	80	6	12
2026	DS_OptA	LAEQ16HR	54	19.1	10600	1	0	18	1	5
2026	DS_OptA	LAEQ16HR	57	8.1	4200	0	0	11	0	2
2026	DS_OptA	LAEQ16HR	60	4	1000	0	0	4	0	1
2026	DS_OptA	LAEQ16HR	63	2.1	0	0	0	0	0	0
2035	DS_OptA	LAEQ16HR	51	56.9	34400	12	0	80	6	12
2035	DS_OptA	LAEQ16HR	54	19.3	10900	1	0	18	1	5
2035	DS_OptA	LAEQ16HR	57	8.2	4200	0	0	11	0	2
2035	DS_OptA	LAEQ16HR	60	4	1100	0	0	4	0	1
2035	DS_OptA	LAEQ16HR	63	2.1	0	0	0	0	0	0

## Noise Contour Data

Scenario: DS\_OptA

Metric: LAEQ8HR

Year	Scenario	Metric	Contour	Area (km2)	Total population	Number of carehomes	Number of hospitals	Number of listed buildings	Number of places of worship	Number of schools
2026	DS_OptA	LAEQ8HR	45	28	26600	7	0	30	5	10
2026	DS_OptA	LAEQ8HR	48	14.7	12300	2	0	18	1	6
2026	DS_OptA	LAEQ8HR	51	8	5400	0	0	9	0	3
2026	DS_OptA	LAEQ8HR	54	4.1	1300	0	0	4	0	1
2026	DS_OptA	LAEQ8HR	55	3.3	700	0	0	0	0	0
2026	DS_OptA	LAEQ8HR	57	2.1	0	0	0	0	0	0
2035	DS_OptA	LAEQ8HR	45	28.6	27300	7	0	30	5	11
2035	DS_OptA	LAEQ8HR	48	15	12800	2	0	18	1	6
2035	DS_OptA	LAEQ8HR	51	8.2	5500	1	0	9	0	3
2035	DS_OptA	LAEQ8HR	54	4.2	1400	0	0	5	0	1
2035	DS_OptA	LAEQ8HR	55	3.4	900	0	0	0	0	0
2035	DS_OptA	LAEQ8HR	57	2.2	100	0	0	0	0	0

## Noise Contour Data

Scenario: DS\_OptA  
Metric: N60

Year	Scenario	Metric	Contour	Area (km2)	Total population	Number of carehomes	Number of hospitals	Number of listed buildings	Number of places of worship	Number of schools
2026	DS_OptA	N60	5	33.2	34000	5	0	38	7	11
2026	DS_OptA	N60	10	14.2	13200	1	0	19	1	4
2026	DS_OptA	N60	20	2.2	300	0	0	0	0	0
2035	DS_OptA	N60	5	34	35000	6	0	39	7	11
2035	DS_OptA	N60	10	14.9	13700	1	0	20	1	4
2035	DS_OptA	N60	20	2.7	300	0	0	0	0	0

## Noise Contour Data

Scenario: DS\_OptA

Metric: N65

Year	Scenario	Metric	Contour	Area (km2)	Total population	Number of carehomes	Number of hospitals	Number of listed buildings	Number of places of worship	Number of schools
2026	DS_OptA	N65	5	565.2	111000	26	0	306	32	41
2026	DS_OptA	N65	10	222.3	87000	20	0	153	22	28
2026	DS_OptA	N65	20	60.8	52400	14	0	84	16	15
2026	DS_OptA	N65	50	15.2	11500	0	0	18	1	5
2026	DS_OptA	N65	100	4.6	1100	0	0	4	0	0
2035	DS_OptA	N65	5	566.5	112300	26	0	309	32	41
2035	DS_OptA	N65	10	223	88000	22	0	155	22	29
2035	DS_OptA	N65	20	61.5	52900	14	0	84	16	15
2035	DS_OptA	N65	50	15.6	12100	1	0	18	1	5
2035	DS_OptA	N65	100	5	1500	0	0	5	0	0

## Noise Contour Data

Scenario: DS\_OptA

Metric: Overflights\_24hr

Year	Scenario	Metric	Contour	Area (km2)	Total population	Number of carehomes	Number of hospitals	Number of listed buildings	Number of places of worship	Number of schools
2026	DS_OptA	Overflights_24hr	5	728	155300	35	0	519	51	66
2026	DS_OptA	Overflights_24hr	10	176.2	59600	16	0	211	18	24
2026	DS_OptA	Overflights_24hr	20	44.7	18800	6	0	68	6	8
2026	DS_OptA	Overflights_24hr	50	0.1	0	0	0	0	0	0
2035	DS_OptA	Overflights_24hr	5	751.9	158200	36	0	531	52	67
2035	DS_OptA	Overflights_24hr	10	186.2	63600	16	0	224	18	26
2035	DS_OptA	Overflights_24hr	20	46.3	19800	6	0	72	6	8
2035	DS_OptA	Overflights_24hr	50	0.5	0	0	0	0	0	0

## Tranquility Data

Scenario: Do Nothing

Metric: LAEQ16HR

Year	Scenario	Metric	Contour	Total Country Parks	Area Country Parks (km2)	Total CQA	Area CQA (km2)	Total Gardens and Designated Landscapes	Area Gardens and Designated Landscapes (km2)	Total National Parks	Area National Parks (km2)	Total NSA	Area NSA (km2)	Total SAMs	Area SAMs (km2)
2022	DN	LAEQ16HR	51	1	0	1	0.1	0	0	0	0	0	0	6	0
2022	DN	LAEQ16HR	54	0	0	0	0	0	0	0	0	0	0	3	0
2022	DN	LAEQ16HR	57	0	0	0	0	0	0	0	0	0	0	3	0
2022	DN	LAEQ16HR	60	0	0	0	0	0	0	0	0	0	0	1	0
2022	DN	LAEQ16HR	63	0	0	0	0	0	0	0	0	0	0	0	0
2026	DN	LAEQ16HR	51	1	0	1	0.1	0	0	0	0	0	0	6	0
2026	DN	LAEQ16HR	54	0	0	0	0	0	0	0	0	0	0	3	0
2026	DN	LAEQ16HR	57	0	0	0	0	0	0	0	0	0	0	3	0
2026	DN	LAEQ16HR	60	0	0	0	0	0	0	0	0	0	0	1	0
2026	DN	LAEQ16HR	63	0	0	0	0	0	0	0	0	0	0	0	0
2035	DN	LAEQ16HR	51	1	0	1	0.1	0	0	0	0	0	0	6	0
2035	DN	LAEQ16HR	54	0	0	0	0	0	0	0	0	0	0	3	0
2035	DN	LAEQ16HR	57	0	0	0	0	0	0	0	0	0	0	3	0
2035	DN	LAEQ16HR	60	0	0	0	0	0	0	0	0	0	0	1	0
2035	DN	LAEQ16HR	63	0	0	0	0	0	0	0	0	0	0	0	0

## Tranquility Data

Scenario: Do Nothing

Metric: LAEQ8HR

Year	Scenario	Metric	Contour	Total Country Parks	Area Country Parks (km2)	Total CQA	Area CQA (km2)	Total Gardens and Designated Landscapes	Area Gardens and Designated Landscapes (km2)	Total National Parks	Area National Parks (km2)	Total NSA	Area NSA (km2)	Total SAMs	Area SAMs (km2)
2022	DN	LAEQ8HR	45	0	0	0	0	0	0	0	0	0	0	3	0
2022	DN	LAEQ8HR	48	0	0	0	0	0	0	0	0	0	0	3	0
2022	DN	LAEQ8HR	51	0	0	0	0	0	0	0	0	0	0	1	0
2022	DN	LAEQ8HR	54	0	0	0	0	0	0	0	0	0	0	0	0
2022	DN	LAEQ8HR	55	0	0	0	0	0	0	0	0	0	0	0	0
2022	DN	LAEQ8HR	57	0	0	0	0	0	0	0	0	0	0	0	0
2026	DN	LAEQ8HR	45	0	0	0	0	0	0	0	0	0	0	3	0
2026	DN	LAEQ8HR	48	0	0	0	0	0	0	0	0	0	0	3	0
2026	DN	LAEQ8HR	51	0	0	0	0	0	0	0	0	0	0	2	0
2026	DN	LAEQ8HR	54	0	0	0	0	0	0	0	0	0	0	1	0
2026	DN	LAEQ8HR	55	0	0	0	0	0	0	0	0	0	0	0	0
2026	DN	LAEQ8HR	57	0	0	0	0	0	0	0	0	0	0	0	0
2035	DN	LAEQ8HR	45	0	0	0	0	0	0	0	0	0	0	3	0
2035	DN	LAEQ8HR	48	0	0	0	0	0	0	0	0	0	0	3	0
2035	DN	LAEQ8HR	51	0	0	0	0	0	0	0	0	0	0	2	0
2035	DN	LAEQ8HR	54	0	0	0	0	0	0	0	0	0	0	1	0
2035	DN	LAEQ8HR	55	0	0	0	0	0	0	0	0	0	0	0	0
2035	DN	LAEQ8HR	57	0	0	0	0	0	0	0	0	0	0	0	0



## Tranquility Data

Scenario: Do Nothing  
Metric: N60

Year	Scenario	Metric	Contour	Total Country Parks	Area Country Parks (km2)	Total CQA	Area CQA (km2)	Total Gardens and Designated Landscapes	Area Gardens and Designated Landscapes (km2)	Total National Parks	Area National Parks (km2)	Total NSA	Area NSA (km2)	Total SAMs	Area SAMs (km2)
2022	DN	N60	10	0	0	0	0	0	0	0	0	0	0	0	0
2026	DN	N60	5	0	0	0	0	0	0	0	0	0	0	5	0
2026	DN	N60	10	0	0	0	0	0	0	0	0	0	0	3	0
2026	DN	N60	20	0	0	0	0	0	0	0	0	0	0	0	0
2035	DN	N60	5	0	0	0	0	0	0	0	0	0	0	5	0
2035	DN	N60	10	0	0	0	0	0	0	0	0	0	0	3	0
2035	DN	N60	20	0	0	0	0	0	0	0	0	0	0	0	0
2022	DN	N60	10	0	0	0	0	0	0	0	0	0	0	0	0

## Tranquility Data

Scenario: Do Nothing

Metric: N65

Year	Scenario	Metric	Contour	Total Country Parks	Area Country Parks (km2)	Total CQA	Area CQA (km2)	Total Gardens and Designated Landscapes	Area Gardens and Designated Landscapes (km2)	Total National Parks	Area National Parks (km2)	Total NSA	Area NSA (km2)	Total SAMs	Area SAMs (km2)
2022	DN	N65	5	1	0.7	3	0.6	1	0.1	0	0	0	0	18	0
2022	DN	N65	10	1	0.6	2	0.5	1	0	0	0	0	0	12	0
2022	DN	N65	20	1	0	2	0.1	1	0	0	0	0	0	5	0
2022	DN	N65	50	0	0	0	0	0	0	0	0	0	0	3	0
2022	DN	N65	100	0	0	0	0	0	0	0	0	0	0	0	0
2026	DN	N65	5	1	0.7	3	0.7	1	0.2	0	0	0	0	21	0.1
2026	DN	N65	10	1	0.6	3	0.5	1	0	0	0	0	0	12	0
2026	DN	N65	20	1	0	2	0.1	1	0	0	0	0	0	5	0
2026	DN	N65	50	0	0	0	0	0	0	0	0	0	0	3	0
2026	DN	N65	100	0	0	0	0	0	0	0	0	0	0	1	0
2035	DN	N65	5	1	0.7	3	0.7	1	0.2	0	0	0	0	21	0.1
2035	DN	N65	10	1	0.6	3	0.5	1	0	0	0	0	0	12	0
2035	DN	N65	20	1	0	2	0.1	1	0	0	0	0	0	5	0
2035	DN	N65	50	0	0	0	0	0	0	0	0	0	0	3	0
2035	DN	N65	100	0	0	0	0	0	0	0	0	0	0	1	0

## Tranquility Data

Scenario: Do Nothing

Metric: Overflights\_24hr

Year	Scenario	Metric	Contour	Total Country Parks	Area Country Parks (km2)	Total CQA	Area CQA (km2)	Total Gardens and Designated Landscapes	Area Gardens and Designated Landscapes (km2)	Total National Parks	Area National Parks (km2)	Total NSA	Area NSA (km2)	Total SAMs	Area SAMs (km2)
2022	DN	Overflights_24hr	1	2	1.5	3	0.9	13	34.8	0	0	0	0	154	2.8
2022	DN	Overflights_24hr	5	1	0.7	3	0.6	5	3.6	0	0	0	0	33	0.1
2022	DN	Overflights_24hr	10	1	0.7	2	0.5	0	0	0	0	0	0	9	0
2022	DN	Overflights_24hr	20	1	0.2	2	0.1	0	0	0	0	0	0	2	0
2026	DN	Overflights_24hr	5	1	0.7	3	0.7	7	8.9	0	0	0	0	50	0.2
2026	DN	Overflights_24hr	10	1	0.7	2	0.5	1	0.7	0	0	0	0	15	0.1
2026	DN	Overflights_24hr	20	1	0.3	2	0.2	0	0	0	0	0	0	4	0
2026	DN	Overflights_24hr	50	0	0	0	0	0	0	0	0	0	0	0	0
2035	DN	Overflights_24hr	5	1	0.7	3	0.8	7	9.8	0	0	0	0	54	0.2
2035	DN	Overflights_24hr	10	1	0.7	2	0.5	1	0.8	0	0	0	0	16	0.1
2035	DN	Overflights_24hr	20	1	0.4	2	0.2	0	0	0	0	0	0	4	0
2035	DN	Overflights_24hr	50	0	0	0	0	0	0	0	0	0	0	0	0

## Tranquility Data

Scenario: DS\_OptA

Metric: LAEQ16HR

Year	Scenario	Metric	Contour	Total Country Parks	Area Country Parks (km2)	Total CQA	Area CQA (km2)	Total Gardens and Designated Landscapes	Area Gardens and Designated Landscapes (km2)	Total National Parks	Area National Parks (km2)	Total NSA	Area NSA (km2)	Total SAMs	Area SAMs (km2)
2026	DS_OptA	LAEQ16HR	51	1	0	1	0.1	0	0	0	0	0	0	6	0
2026	DS_OptA	LAEQ16HR	54	0	0	0	0	0	0	0	0	0	0	3	0
2026	DS_OptA	LAEQ16HR	57	0	0	0	0	0	0	0	0	0	0	3	0
2026	DS_OptA	LAEQ16HR	60	0	0	0	0	0	0	0	0	0	0	1	0
2026	DS_OptA	LAEQ16HR	63	0	0	0	0	0	0	0	0	0	0	0	0
2035	DS_OptA	LAEQ16HR	51	1	0	1	0.1	0	0	0	0	0	0	6	0
2035	DS_OptA	LAEQ16HR	54	0	0	0	0	0	0	0	0	0	0	3	0
2035	DS_OptA	LAEQ16HR	57	0	0	0	0	0	0	0	0	0	0	3	0
2035	DS_OptA	LAEQ16HR	60	0	0	0	0	0	0	0	0	0	0	1	0
2035	DS_OptA	LAEQ16HR	63	0	0	0	0	0	0	0	0	0	0	0	0

## Tranquility Data

Scenario: DS\_OptA

Metric: LAEQ8HR

Year	Scenario	Metric	Contour	Total Country Parks	Area Country Parks (km2)	Total CQA	Area CQA (km2)	Total Gardens and Designated Landscapes	Area Gardens and Designated Landscapes (km2)	Total National Parks	Area National Parks (km2)	Total NSA	Area NSA (km2)	Total SAMs	Area SAMs (km2)
2026	DS_OptA	LAEQ8HR	45	0	0	0	0	0	0	0	0	0	0	3	0
2026	DS_OptA	LAEQ8HR	48	0	0	0	0	0	0	0	0	0	0	3	0
2026	DS_OptA	LAEQ8HR	51	0	0	0	0	0	0	0	0	0	0	2	0
2026	DS_OptA	LAEQ8HR	54	0	0	0	0	0	0	0	0	0	0	1	0
2026	DS_OptA	LAEQ8HR	55	0	0	0	0	0	0	0	0	0	0	0	0
2026	DS_OptA	LAEQ8HR	57	0	0	0	0	0	0	0	0	0	0	0	0
2035	DS_OptA	LAEQ8HR	45	0	0	0	0	0	0	0	0	0	0	3	0
2035	DS_OptA	LAEQ8HR	48	0	0	0	0	0	0	0	0	0	0	3	0
2035	DS_OptA	LAEQ8HR	51	0	0	0	0	0	0	0	0	0	0	2	0
2035	DS_OptA	LAEQ8HR	54	0	0	0	0	0	0	0	0	0	0	1	0
2035	DS_OptA	LAEQ8HR	55	0	0	0	0	0	0	0	0	0	0	0	0
2035	DS_OptA	LAEQ8HR	57	0	0	0	0	0	0	0	0	0	0	0	0

## Tranquility Data

Scenario: DS\_OptA  
Metric: N60

Year	Scenario	Metric	Contour	Total Country Parks	Area Country Parks (km2)	Total CQA	Area CQA (km2)	Total Gardens and Designated Landscapes	Area Gardens and Designated Landscapes (km2)	Total National Parks	Area National Parks (km2)	Total NSA	Area NSA (km2)	Total SAMs	Area SAMs (km2)
2026	DS_OptA	N60	5	0	0	0	0	0	0	0	0	0	0	5	0
2026	DS_OptA	N60	10	0	0	0	0	0	0	0	0	0	0	3	0
2026	DS_OptA	N60	20	0	0	0	0	0	0	0	0	0	0	0	0
2035	DS_OptA	N60	5	0	0	0	0	0	0	0	0	0	0	5	0
2035	DS_OptA	N60	10	0	0	0	0	0	0	0	0	0	0	3	0
2035	DS_OptA	N60	20	0	0	0	0	0	0	0	0	0	0	0	0

## Tranquility Data

Scenario: DS\_OptA

Metric: N65

Year	Scenario	Metric	Contour	Total Country Parks	Area Country Parks (km2)	Total CQA	Area CQA (km2)	Total Gardens and Designated Landscapes	Area Gardens and Designated Landscapes (km2)	Total National Parks	Area National Parks (km2)	Total NSA	Area NSA (km2)	Total SAMs	Area SAMs (km2)
2026	DS_OptA	N65	5	1	0.7	3	0.7	1	0.2	0	0	0	0	21	0.1
2026	DS_OptA	N65	10	1	0.6	3	0.5	1	0	0	0	0	0	12	0
2026	DS_OptA	N65	20	1	0	2	0.1	1	0	0	0	0	0	5	0
2026	DS_OptA	N65	50	0	0	0	0	0	0	0	0	0	0	3	0
2026	DS_OptA	N65	100	0	0	0	0	0	0	0	0	0	0	1	0
2035	DS_OptA	N65	5	1	0.7	3	0.7	1	0.2	0	0	0	0	21	0.1
2035	DS_OptA	N65	10	1	0.6	3	0.5	1	0	0	0	0	0	12	0
2035	DS_OptA	N65	20	1	0	2	0.1	1	0	0	0	0	0	5	0
2035	DS_OptA	N65	50	0	0	0	0	0	0	0	0	0	0	3	0
2035	DS_OptA	N65	100	0	0	0	0	0	0	0	0	0	0	1	0

## Tranquility Data

Scenario: DS\_OptA

Metric: Overflights\_24hr

Year	Scenario	Metric	Contour	Total Country Parks	Area Country Parks (km2)	Total CQA	Area CQA (km2)	Total Gardens and Designated Landscapes	Area Gardens and Designated Landscapes (km2)	Total National Parks	Area National Parks (km2)	Total NSA	Area NSA (km2)	Total SAMs	Area SAMs (km2)
2026	DS_OptA	Overflights_24hr	1	2	1.5	3	0.9	13	37.5	0	0	0	0	163	3.1
2026	DS_OptA	Overflights_24hr	5	1	0.7	3	0.7	7	9.8	0	0	0	0	49	0.2
2026	DS_OptA	Overflights_24hr	10	1	0.7	2	0.5	1	0.7	0	0	0	0	15	0.1
2026	DS_OptA	Overflights_24hr	20	1	0.3	2	0.2	0	0	0	0	0	0	4	0
2026	DS_OptA	Overflights_24hr	50	0	0	0	0	0	0	0	0	0	0	0	0
2035	DS_OptA	Overflights_24hr	1	2	1.5	3	0.9	13	37.6	0	0	0	0	163	3.1
2035	DS_OptA	Overflights_24hr	5	1	0.7	3	0.8	7	11	0	0	0	0	53	0.3
2035	DS_OptA	Overflights_24hr	10	1	0.7	2	0.5	1	0.8	0	0	0	0	16	0.1
2035	DS_OptA	Overflights_24hr	20	1	0.4	2	0.2	0	0	0	0	0	0	4	0
2035	DS_OptA	Overflights_24hr	50	0	0	0	0	0	0	0	0	0	0	0	0



## Biodiversity Data

Scenario: Do Nothing

Metric: LAEQ16HR

Year	Scenario	Metric	Contour	Total Local Nature Reserves	Area Local Nature Reserves (km2)	Total National Nature Reserves	Area National Nature Reserves (km2)	Total RAMSAR	Area RAMSAR (km2)	Total SAC	Area SAC (km2)	Total SPA	Area SPA (km2)	Total SSSI	Area SSSI (km2)
2022	DN	LAEQ16HR	51	2	0.1	0	0	0	0	0	0	1	0.6	1	0.3
2022	DN	LAEQ16HR	54	0	0	0	0	0	0	0	0	0	0	0	0
2022	DN	LAEQ16HR	57	0	0	0	0	0	0	0	0	0	0	0	0
2022	DN	LAEQ16HR	60	0	0	0	0	0	0	0	0	0	0	0	0
2022	DN	LAEQ16HR	63	0	0	0	0	0	0	0	0	0	0	0	0
2026	DN	LAEQ16HR	51	2	0.1	0	0	0	0	0	0	1	0.6	1	0.3
2026	DN	LAEQ16HR	54	0	0	0	0	0	0	0	0	0	0	0	0
2026	DN	LAEQ16HR	57	0	0	0	0	0	0	0	0	0	0	0	0
2026	DN	LAEQ16HR	60	0	0	0	0	0	0	0	0	0	0	0	0
2026	DN	LAEQ16HR	63	0	0	0	0	0	0	0	0	0	0	0	0
2035	DN	LAEQ16HR	51	2	0.1	0	0	0	0	0	0	1	0.6	1	0.3
2035	DN	LAEQ16HR	54	0	0	0	0	0	0	0	0	0	0	0	0
2035	DN	LAEQ16HR	57	0	0	0	0	0	0	0	0	0	0	0	0
2035	DN	LAEQ16HR	60	0	0	0	0	0	0	0	0	0	0	0	0
2035	DN	LAEQ16HR	63	0	0	0	0	0	0	0	0	0	0	0	0

## Biodiversity Data

Scenario: Do Nothing

Metric: LAEQ8HR

Year	Scenario	Metric	Contour	Total Local Nature Reserves	Area Local Nature Reserves (km2)	Total National Nature Reserves	Area National Nature Reserves (km2)	Total RAMSAR	Area RAMSAR (km2)	Total SAC	Area SAC (km2)	Total SPA	Area SPA (km2)	Total SSSI	Area SSSI (km2)
2022	DN	LAEQ8HR	45	0	0	0	0	0	0	0	0	0	0	0	0
2022	DN	LAEQ8HR	48	0	0	0	0	0	0	0	0	0	0	0	0
2022	DN	LAEQ8HR	51	0	0	0	0	0	0	0	0	0	0	0	0
2022	DN	LAEQ8HR	54	0	0	0	0	0	0	0	0	0	0	0	0
2022	DN	LAEQ8HR	55	0	0	0	0	0	0	0	0	0	0	0	0
2022	DN	LAEQ8HR	57	0	0	0	0	0	0	0	0	0	0	0	0
2026	DN	LAEQ8HR	45	0	0	0	0	0	0	0	0	0	0	0	0
2026	DN	LAEQ8HR	48	0	0	0	0	0	0	0	0	0	0	0	0
2026	DN	LAEQ8HR	51	0	0	0	0	0	0	0	0	0	0	0	0
2026	DN	LAEQ8HR	54	0	0	0	0	0	0	0	0	0	0	0	0
2026	DN	LAEQ8HR	55	0	0	0	0	0	0	0	0	0	0	0	0
2026	DN	LAEQ8HR	57	0	0	0	0	0	0	0	0	0	0	0	0
2035	DN	LAEQ8HR	45	0	0	0	0	0	0	0	0	0	0	0	0
2035	DN	LAEQ8HR	48	0	0	0	0	0	0	0	0	0	0	0	0
2035	DN	LAEQ8HR	51	0	0	0	0	0	0	0	0	0	0	0	0
2035	DN	LAEQ8HR	54	0	0	0	0	0	0	0	0	0	0	0	0
2035	DN	LAEQ8HR	55	0	0	0	0	0	0	0	0	0	0	0	0
2035	DN	LAEQ8HR	57	0	0	0	0	0	0	0	0	0	0	0	0

## Biodiversity Data

Scenario: Do Nothing

Metric: N60

Year	Scenario	Metric	Contour	Total Local Nature Reserves	Area Local Nature Reserves (km2)	Total National Nature Reserves	Area National Nature Reserves (km2)	Total RAMSAR	Area RAMSAR (km2)	Total SAC	Area SAC (km2)	Total SPA	Area SPA (km2)	Total SSSI	Area SSSI (km2)
2022	DN	N60	5	0	0	0	0	0	0	0	0	0	0	0	0
2022	DN	N60	10	0	0	0	0	0	0	0	0	0	0	0	0
2026	DN	N60	5	0	0	0	0	0	0	0	0	0	0	0	0
2026	DN	N60	10	0	0	0	0	0	0	0	0	0	0	0	0
2026	DN	N60	20	0	0	0	0	0	0	0	0	0	0	0	0
2035	DN	N60	5	0	0	0	0	0	0	0	0	0	0	0	0
2035	DN	N60	10	0	0	0	0	0	0	0	0	0	0	0	0
2035	DN	N60	20	0	0	0	0	0	0	0	0	0	0	0	0

## Biodiversity Data

Scenario: Do Nothing

Metric: N65

Year	Scenario	Metric	Contour	Total Local Nature Reserves	Area Local Nature Reserves (km2)	Total National Nature Reserves	Area National Nature Reserves (km2)	Total RAMSAR	Area RAMSAR (km2)	Total SAC	Area SAC (km2)	Total SPA	Area SPA (km2)	Total SSSI	Area SSSI (km2)
2022	DN	N65	5	3	1	1	2.9	1	1	2	2.4	2	54.2	6	4.7
2022	DN	N65	10	2	0.8	1	1.1	1	0.5	2	1	2	27.9	4	2.4
2022	DN	N65	20	2	0.4	0	0	0	0	0	0	1	2.7	0	0
2022	DN	N65	50	0	0	0	0	0	0	0	0	0	0	0	0
2022	DN	N65	100	0	0	0	0	0	0	0	0	0	0	0	0
2026	DN	N65	5	3	1	1	2.9	1	1	2	2.5	2	54.3	6	4.7
2026	DN	N65	10	2	0.8	1	1.1	1	0.5	2	1.1	2	27.9	4	2.4
2026	DN	N65	20	2	0.4	0	0	0	0	1	0.1	1	2.7	0	0
2026	DN	N65	50	0	0	0	0	0	0	0	0	0	0	0	0
2026	DN	N65	100	0	0	0	0	0	0	0	0	0	0	0	0
2035	DN	N65	5	3	1	1	2.9	1	1	2	2.5	2	54.3	6	4.7
2035	DN	N65	10	2	0.8	1	1.1	1	0.5	2	1.1	2	27.9	4	2.4
2035	DN	N65	20	2	0.4	0	0	0	0	1	0.1	1	2.7	0	0
2035	DN	N65	50	0	0	0	0	0	0	0	0	0	0	0	0
2035	DN	N65	100	0	0	0	0	0	0	0	0	0	0	0	0

## Biodiversity Data

Scenario: Do Nothing

Metric: Overflights\_24hr

Year	Scenario	Metric	Contour	Total Local Nature Reserves	Area Local Nature Reserves (km2)	Total National Nature Reserves	Area National Nature Reserves (km2)	Total RAMSAR	Area RAMSAR (km2)	Total SAC	Area SAC (km2)	Total SPA	Area SPA (km2)	Total SSSI	Area SSSI (km2)
2022	DN	Overflights_24hr	5	3	0.9	1	2.7	1	1.5	2	2	1	26.4	8	4.7
2022	DN	Overflights_24hr	10	2	0.7	1	0.1	1	0	2	0.2	1	12.2	3	0.9
2022	DN	Overflights_24hr	20	1	0.1	0	0	0	0	1	0.1	1	4.1	1	0.2
2026	DN	Overflights_24hr	5	4	1.1	1	3.7	2	2.2	2	2.7	2	29.9	12	6
2026	DN	Overflights_24hr	10	3	0.7	1	0.7	1	0.3	2	0.7	1	14.5	5	2
2026	DN	Overflights_24hr	20	1	0.3	0	0	0	0	1	0.1	1	4.9	1	0.3
2026	DN	Overflights_24hr	50	0	0	0	0	0	0	0	0	0	0	0	0
2035	DN	Overflights_24hr	5	4	1.1	1	4	2	2.4	2	2.9	2	30.4	13	6.3
2035	DN	Overflights_24hr	10	3	0.8	1	0.7	1	0.4	2	0.8	1	15	6	2.1
2035	DN	Overflights_24hr	20	1	0.3	0	0	0	0	1	0.1	1	5	1	0.3
2035	DN	Overflights_24hr	50	0	0	0	0	0	0	0	0	0	0	0	0

## Biodiversity Data

Scenario: DS\_OptA

Metric: LAEQ16HR

Year	Scenario	Metric	Contour	Total Local Nature Reserves	Area Local Nature Reserves (km2)	Total National Nature Reserves	Area National Nature Reserves (km2)	Total RAMSAR	Area RAMSAR (km2)	Total SAC	Area SAC (km2)	Total SPA	Area SPA (km2)	Total SSSI	Area SSSI (km2)
2026	DS_OptA	LAEQ16HR	51	2	0.1	0	0	0	0	0	0	1	0.6	1	0.3
2026	DS_OptA	LAEQ16HR	54	0	0	0	0	0	0	0	0	0	0	0	0
2026	DS_OptA	LAEQ16HR	57	0	0	0	0	0	0	0	0	0	0	0	0
2026	DS_OptA	LAEQ16HR	60	0	0	0	0	0	0	0	0	0	0	0	0
2026	DS_OptA	LAEQ16HR	63	0	0	0	0	0	0	0	0	0	0	0	0
2035	DS_OptA	LAEQ16HR	51	2	0.1	0	0	0	0	0	0	1	0.6	1	0.3
2035	DS_OptA	LAEQ16HR	54	0	0	0	0	0	0	0	0	0	0	0	0
2035	DS_OptA	LAEQ16HR	57	0	0	0	0	0	0	0	0	0	0	0	0
2035	DS_OptA	LAEQ16HR	60	0	0	0	0	0	0	0	0	0	0	0	0
2035	DS_OptA	LAEQ16HR	63	0	0	0	0	0	0	0	0	0	0	0	0

## Biodiversity Data

Scenario: DS\_OptA

Metric: LAEQ8HR

Year	Scenario	Metric	Contour	Total Local Nature Reserves	Area Local Nature Reserves (km2)	Total National Nature Reserves	Area National Nature Reserves (km2)	Total RAMSAR	Area RAMSAR (km2)	Total SAC	Area SAC (km2)	Total SPA	Area SPA (km2)	Total SSSI	Area SSSI (km2)
2026	DS_OptA	LAEQ8HR	45	0	0	0	0	0	0	0	0	0	0	0	0
2026	DS_OptA	LAEQ8HR	48	0	0	0	0	0	0	0	0	0	0	0	0
2026	DS_OptA	LAEQ8HR	51	0	0	0	0	0	0	0	0	0	0	0	0
2026	DS_OptA	LAEQ8HR	54	0	0	0	0	0	0	0	0	0	0	0	0
2026	DS_OptA	LAEQ8HR	55	0	0	0	0	0	0	0	0	0	0	0	0
2026	DS_OptA	LAEQ8HR	57	0	0	0	0	0	0	0	0	0	0	0	0
2035	DS_OptA	LAEQ8HR	45	0	0	0	0	0	0	0	0	0	0	0	0
2035	DS_OptA	LAEQ8HR	48	0	0	0	0	0	0	0	0	0	0	0	0
2035	DS_OptA	LAEQ8HR	51	0	0	0	0	0	0	0	0	0	0	0	0
2035	DS_OptA	LAEQ8HR	54	0	0	0	0	0	0	0	0	0	0	0	0
2035	DS_OptA	LAEQ8HR	55	0	0	0	0	0	0	0	0	0	0	0	0
2035	DS_OptA	LAEQ8HR	57	0	0	0	0	0	0	0	0	0	0	0	0

## Biodiversity Data

Scenario: DS\_OptA  
Metric: N60

Year	Scenario	Metric	Contour	Total Local Nature Reserves	Area Local Nature Reserves (km2)	Total National Nature Reserves	Area National Nature Reserves (km2)	Total RAMSAR	Area RAMSAR (km2)	Total SAC	Area SAC (km2)	Total SPA	Area SPA (km2)	Total SSSI	Area SSSI (km2)
2026	DS_OptA	N60	5	0	0	0	0	0	0	0	0	0	0	0	0
2026	DS_OptA	N60	10	0	0	0	0	0	0	0	0	0	0	0	0
2026	DS_OptA	N60	20	0	0	0	0	0	0	0	0	0	0	0	0
2035	DS_OptA	N60	5	0	0	0	0	0	0	0	0	0	0	0	0
2035	DS_OptA	N60	10	0	0	0	0	0	0	0	0	0	0	0	0
2035	DS_OptA	N60	20	0	0	0	0	0	0	0	0	0	0	0	0



## Biodiversity Data

Scenario: DS\_OptA

Metric: N65

Year	Scenario	Metric	Contour	Total Local Nature Reserves	Area Local Nature Reserves (km2)	Total National Nature Reserves	Area National Nature Reserves (km2)	Total RAMSAR	Area RAMSAR (km2)	Total SAC	Area SAC (km2)	Total SPA	Area SPA (km2)	Total SSSI	Area SSSI (km2)
2026	DS_OptA	N65	5	3	1	1	2.8	1	1	2	2.4	2	54.2	6	4.7
2026	DS_OptA	N65	10	2	0.8	1	1.1	1	0.5	2	1.1	2	27.8	4	2.4
2026	DS_OptA	N65	20	2	0.4	0	0	0	0	1	0.1	1	2.7	0	0
2026	DS_OptA	N65	50	0	0	0	0	0	0	0	0	0	0	0	0
2026	DS_OptA	N65	100	0	0	0	0	0	0	0	0	0	0	0	0
2035	DS_OptA	N65	5	3	1	1	2.8	1	1	2	2.4	2	54.2	6	4.7
2035	DS_OptA	N65	10	2	0.8	1	1.1	1	0.5	2	1.1	2	27.8	4	2.4
2035	DS_OptA	N65	20	2	0.4	0	0	0	0	1	0.1	1	2.7	0	0
2035	DS_OptA	N65	50	0	0	0	0	0	0	0	0	0	0	0	0
2035	DS_OptA	N65	100	0	0	0	0	0	0	0	0	0	0	0	0

## Biodiversity Data

Scenario: DS\_OptA

Metric: Overflights\_24hr

Year	Scenario	Metric	Contour	Total Local Nature Reserves	Area Local Nature Reserves (km2)	Total National Nature Reserves	Area National Nature Reserves (km2)	Total RAMSAR	Area RAMSAR (km2)	Total SAC	Area SAC (km2)	Total SPA	Area SPA (km2)	Total SSSI	Area SSSI (km2)
2026	DS_OptA	Overflights_24hr	5	4	1.1	1	3.7	2	2.2	2	2.7	2	29.8	12	6
2026	DS_OptA	Overflights_24hr	10	3	0.7	1	0.7	1	0.3	2	0.7	1	14.5	4	1.9
2026	DS_OptA	Overflights_24hr	20	1	0.3	0	0	0	0	1	0.1	1	4.9	1	0.3
2026	DS_OptA	Overflights_24hr	50	0	0	0	0	0	0	0	0	0	0	0	0
2035	DS_OptA	Overflights_24hr	5	4	1.1	1	3.9	2	2.4	2	2.8	2	30.3	12	6.3
2035	DS_OptA	Overflights_24hr	10	3	0.8	1	0.7	1	0.4	2	0.8	1	14.9	6	2.1
2035	DS_OptA	Overflights_24hr	20	1	0.3	0	0	0	0	1	0.1	1	5	1	0.3
2035	DS_OptA	Overflights_24hr	50	0	0	0	0	0	0	0	0	0	0	0	0

## CO2 Data

*Scenario: Do Nothing*

Year	Scenario	Fuel Use (t)	Total GHG emissions (tCO <sub>2</sub> e)	Total Traded GHG	Non-traded GHG
2022	Do nothing	15276	48579	48116	463
2026	Do nothing	18221	57942	57366	485
2035	Do nothing	18694	59447	58852	594

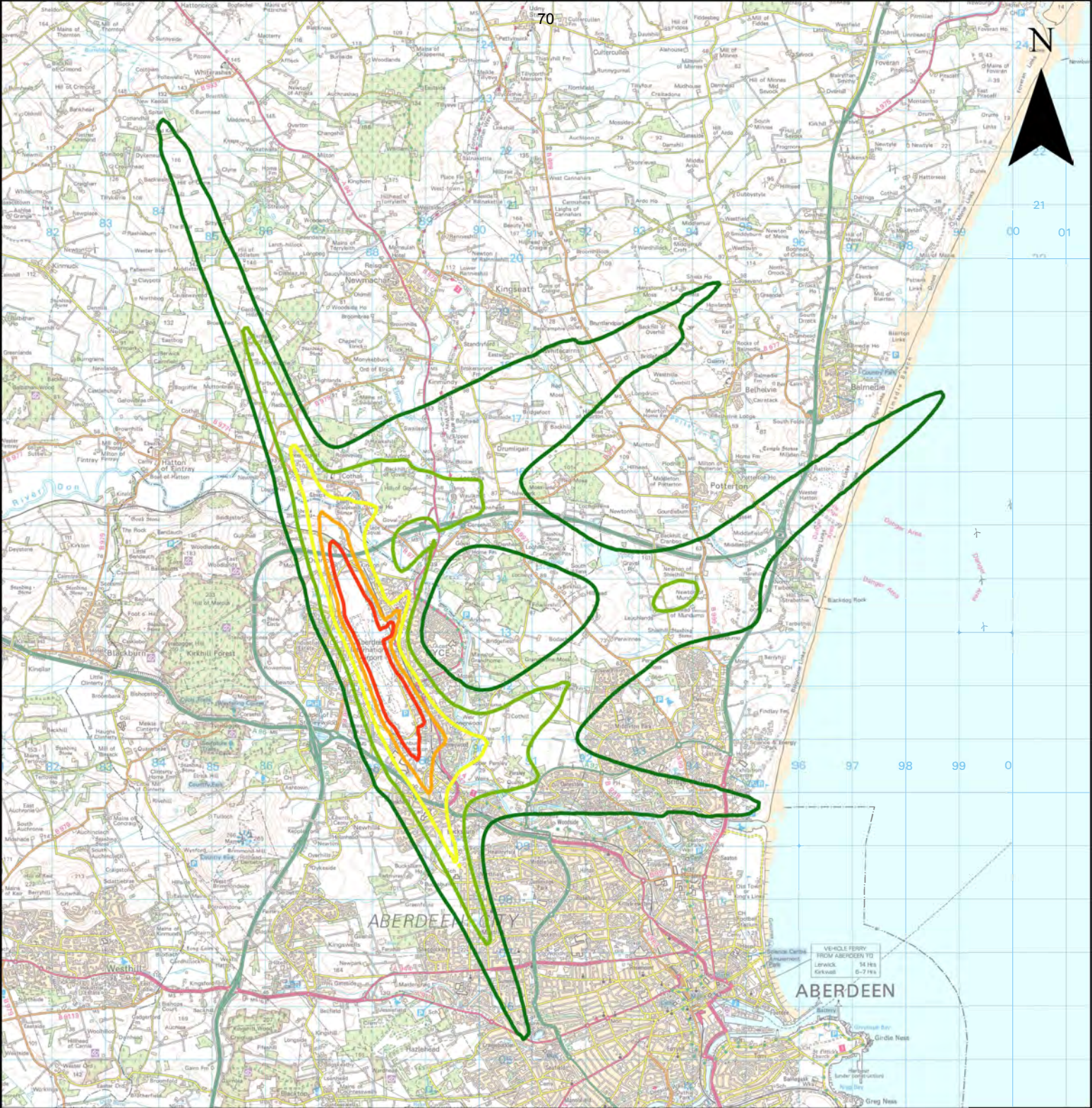
## CO2 Data

Scenario: Option A

Year	Scenario	Fuel Use (t)	Total GHG emissions (tCO2e)	Total Traded GHG	Non-traded GHG
2026	Option A	18227	57961	57384	576
2035	Option A	18700	59466	58871	595

## Contour Figures





Aberdeen Airport 2022  
 92-day summer day  $L_{Aeq,16h}$  51-63 dB contours  
 Current day

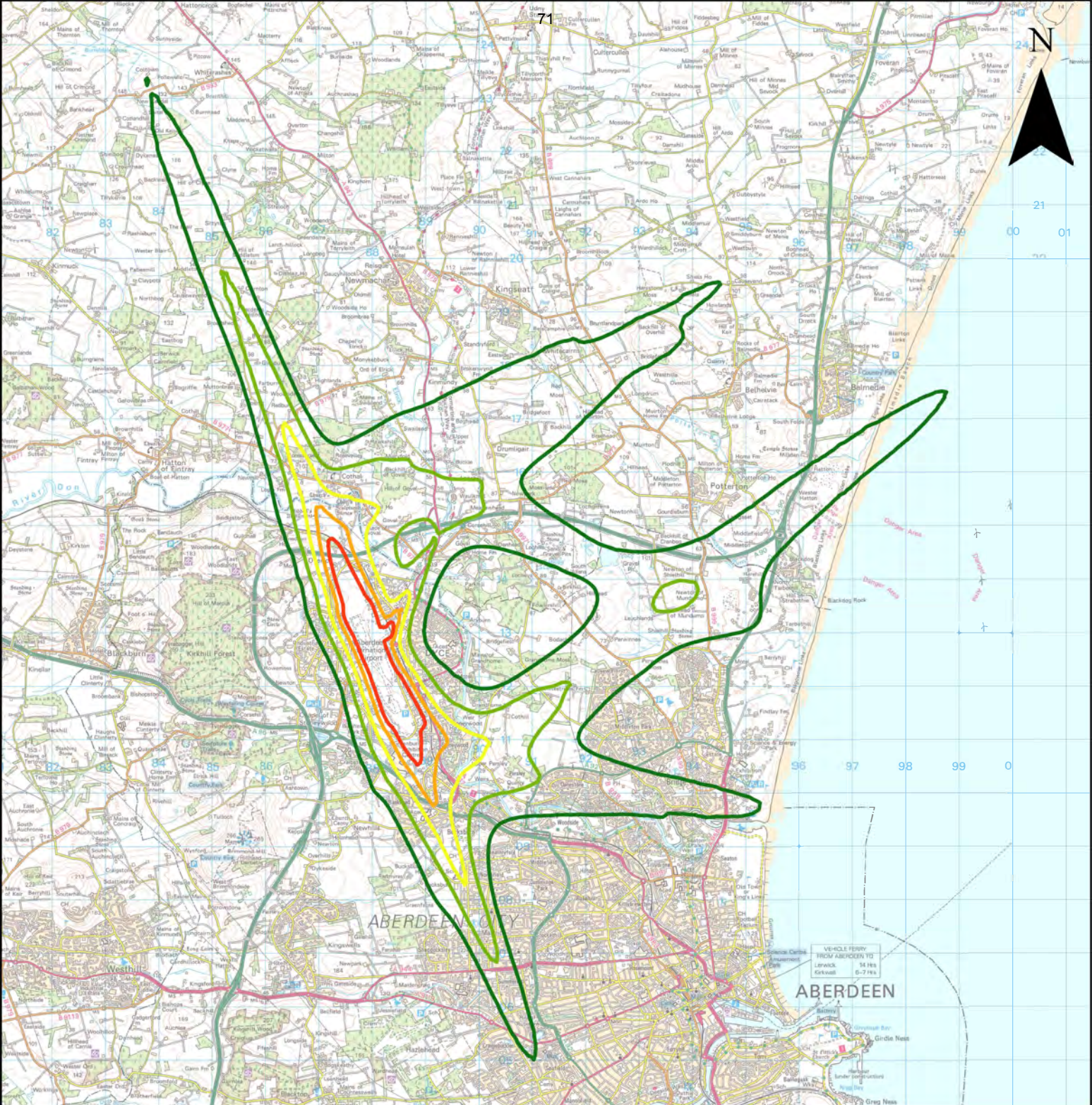


$L_{Aeq,16h}$

<span style="border: 2px solid darkgreen; display: inline-block; width: 15px; height: 10px;"></span> 51	<span style="border: 2px solid yellow; display: inline-block; width: 15px; height: 10px;"></span> 57	<span style="border: 2px solid red; display: inline-block; width: 15px; height: 10px;"></span> 63
<span style="border: 2px solid lightgreen; display: inline-block; width: 15px; height: 10px;"></span> 54	<span style="border: 2px solid orange; display: inline-block; width: 15px; height: 10px;"></span> 60	

© Crown copyright and database rights 2023  
 Ordnance Survey 0100031673



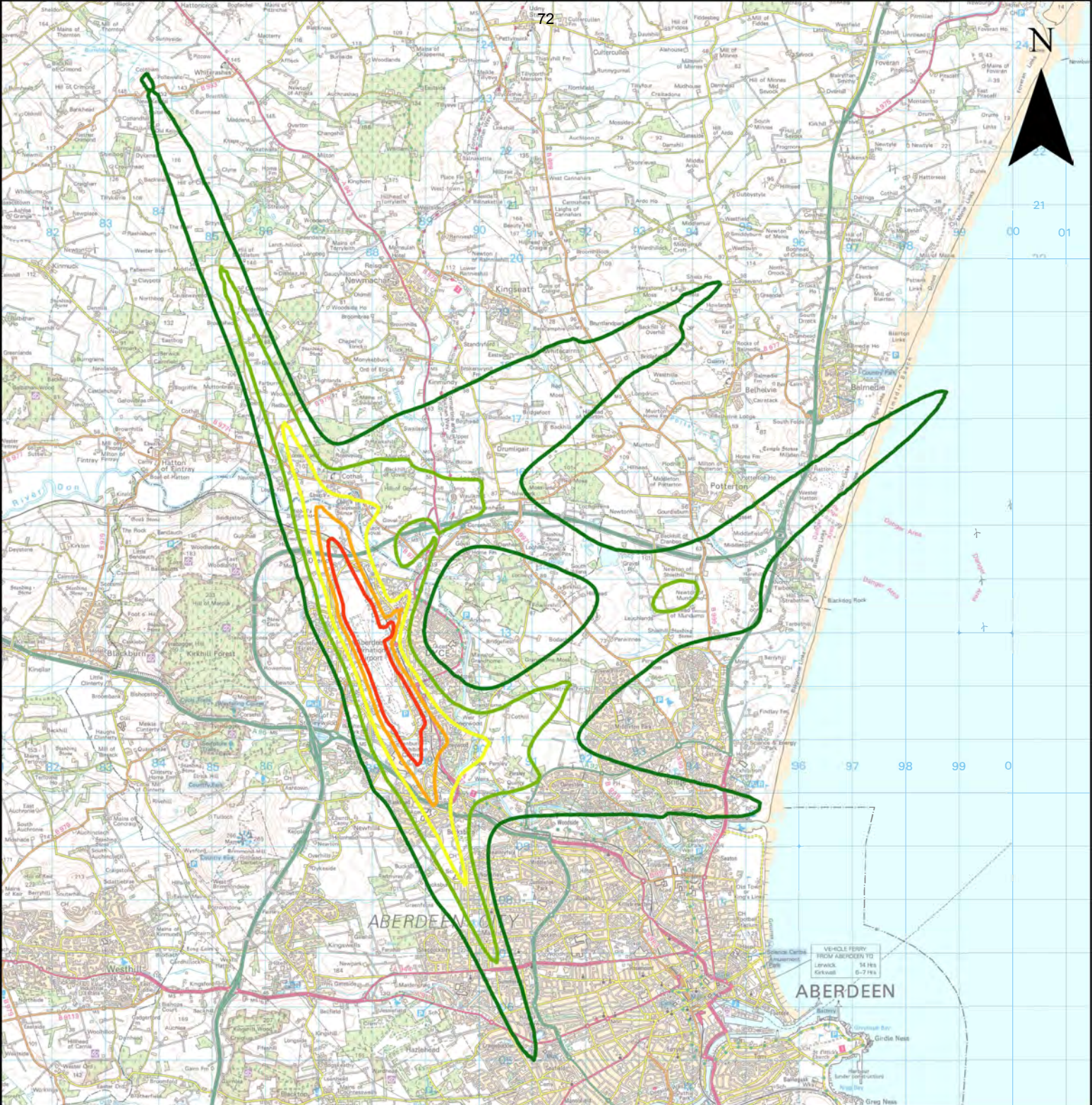


Aberdeen Airport 2026 92-day summer day  $L_{Aeq,16h}$  51-63 dB contours

Year of implementation without airspace change proposal







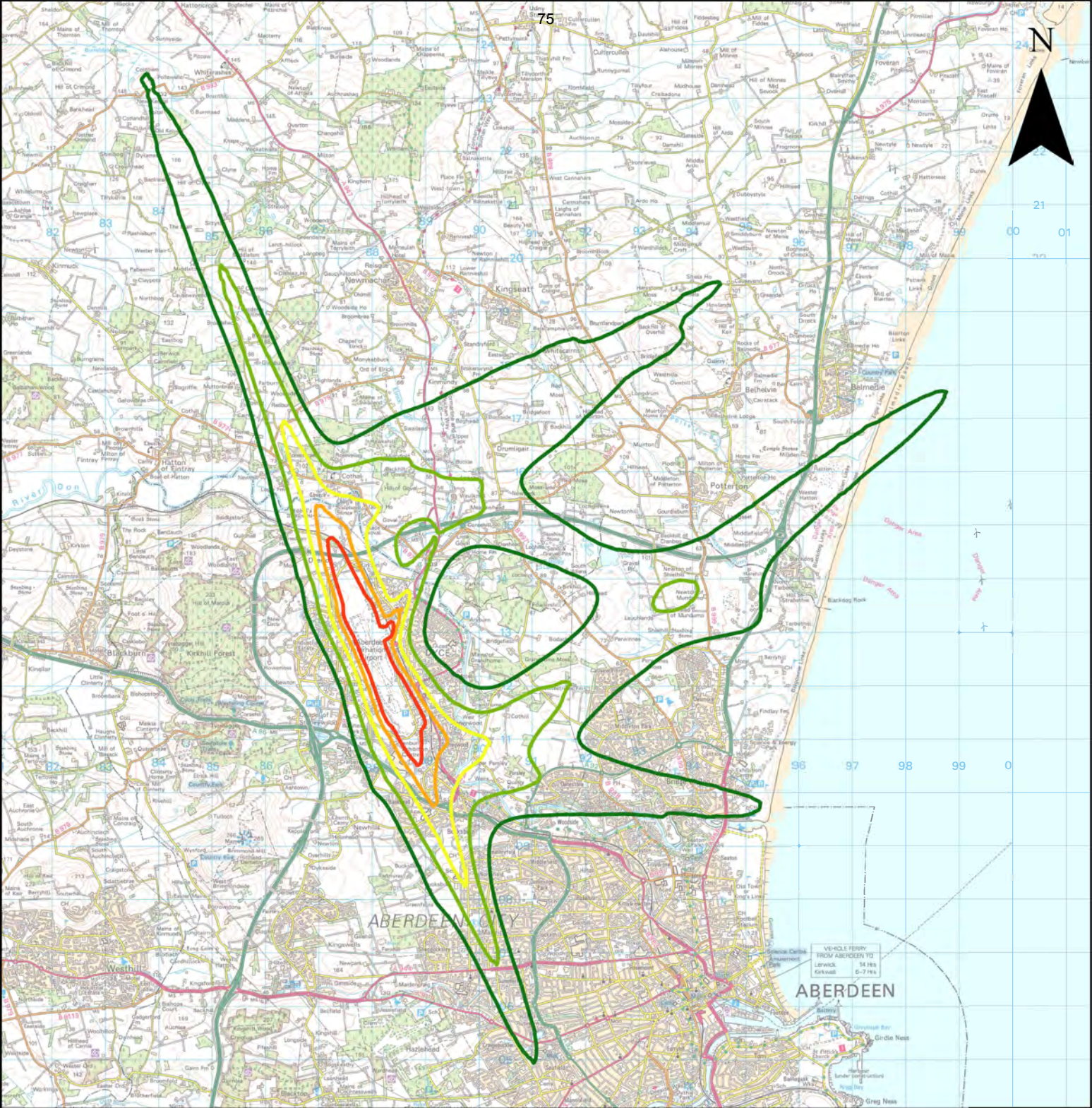
Aberdeen Airport 2026 92-day summer day  $L_{Aeq,16h}$  51-63 dB contours

Year of implementation – Vectors to final approach



© Crown copyright and database rights 2023  
 Ordnance Survey 0100031673



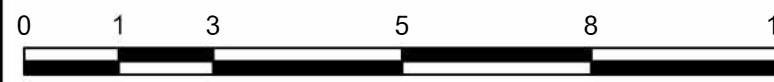


Aberdeen Airport 2035 92-day summer day  $L_{Aeq,16h}$  51-63 dB contours  
 10 years after implementation without airspace change proposal

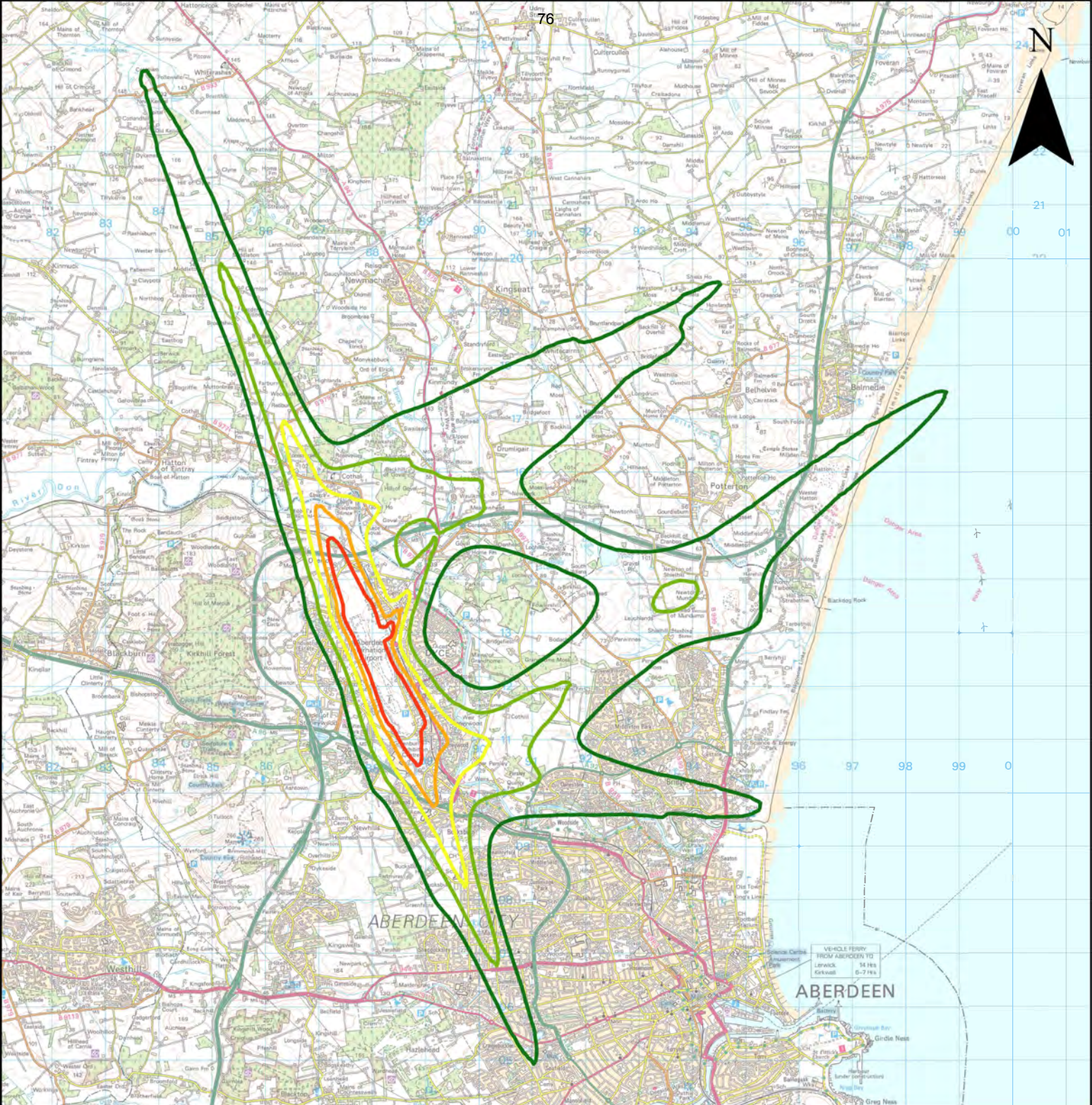
$L_{Aeq,16h}$

<span style="border: 2px solid darkgreen; display: inline-block; width: 15px; height: 10px;"></span> 51	<span style="border: 2px solid yellowgreen; display: inline-block; width: 15px; height: 10px;"></span> 57	<span style="border: 2px solid red; display: inline-block; width: 15px; height: 10px;"></span> 63
<span style="border: 2px solid lightgreen; display: inline-block; width: 15px; height: 10px;"></span> 54	<span style="border: 2px solid orange; display: inline-block; width: 15px; height: 10px;"></span> 60	

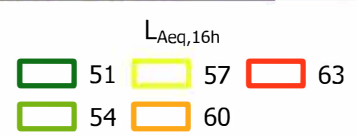
© Crown copyright and database rights 2023  
 Ordnance Survey 0100031673



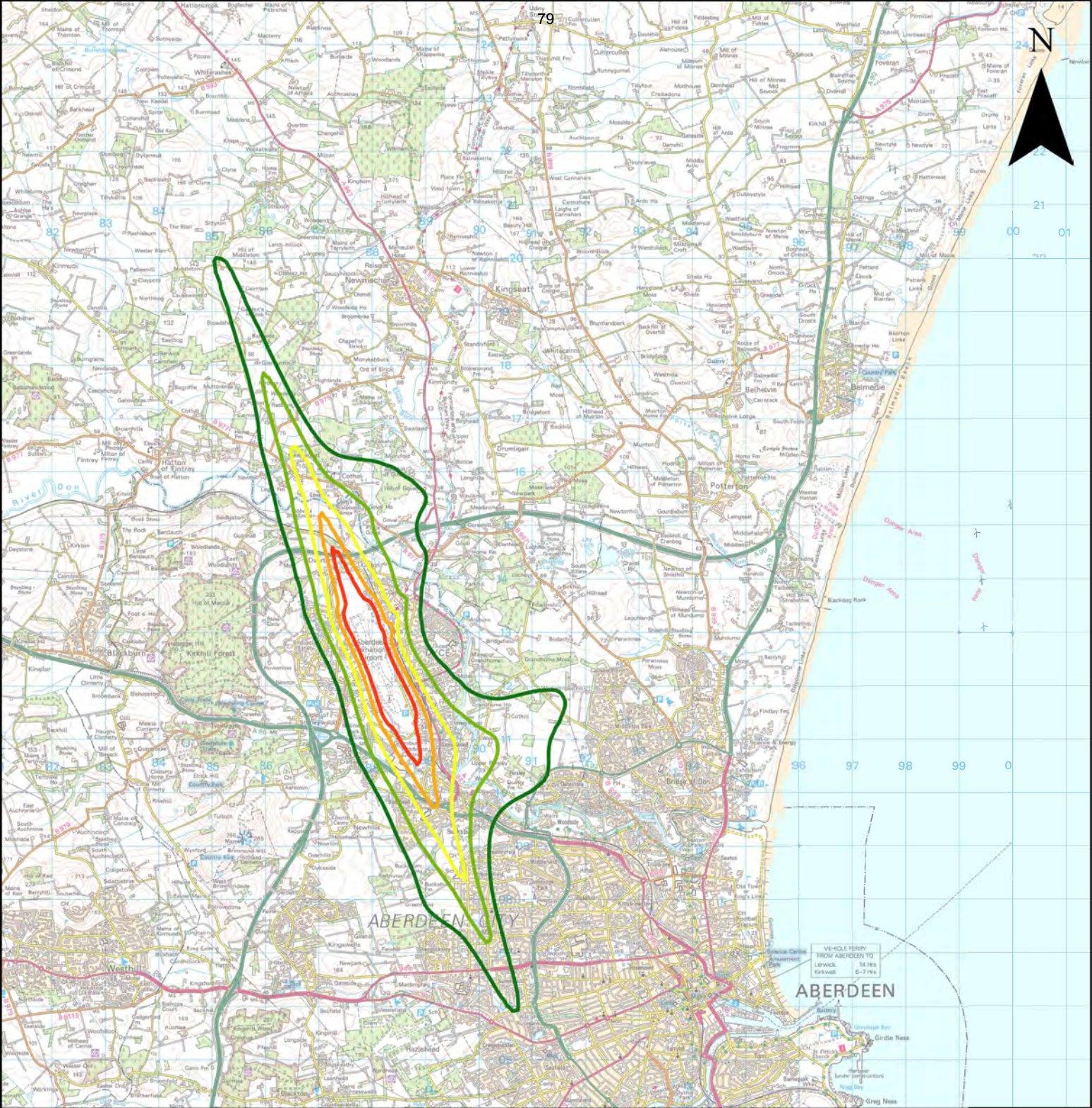




Aberdeen Airport 2035 92-day summer day  $L_{Aeq,16h}$  51-63 dB contours  
 10 years after implementation – Vectors to final approach



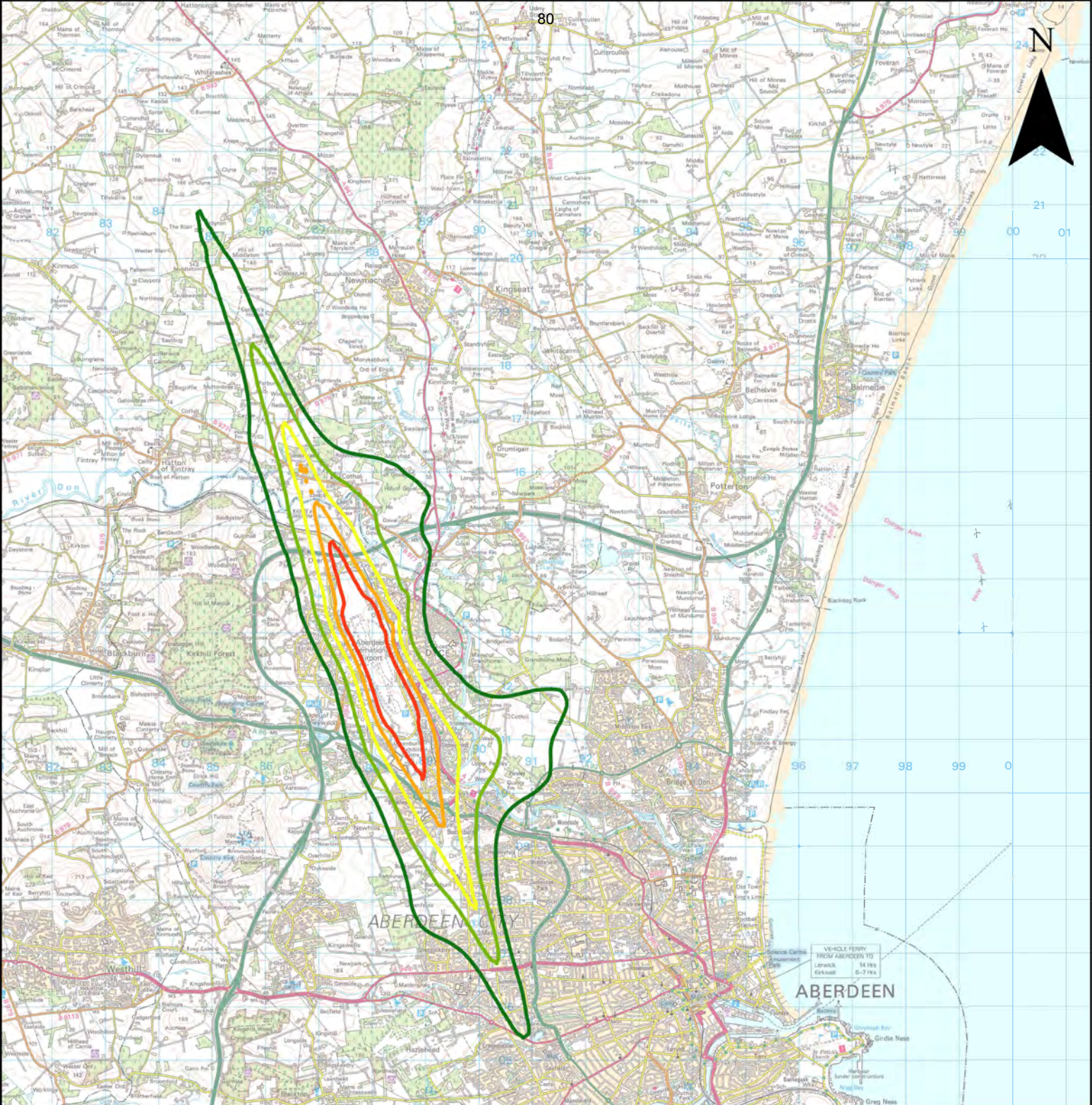




Aberdeen Airport 2022  
 92-day summer night  $L_{Aeq,8h}$  45-57 dB contours  
 Current day





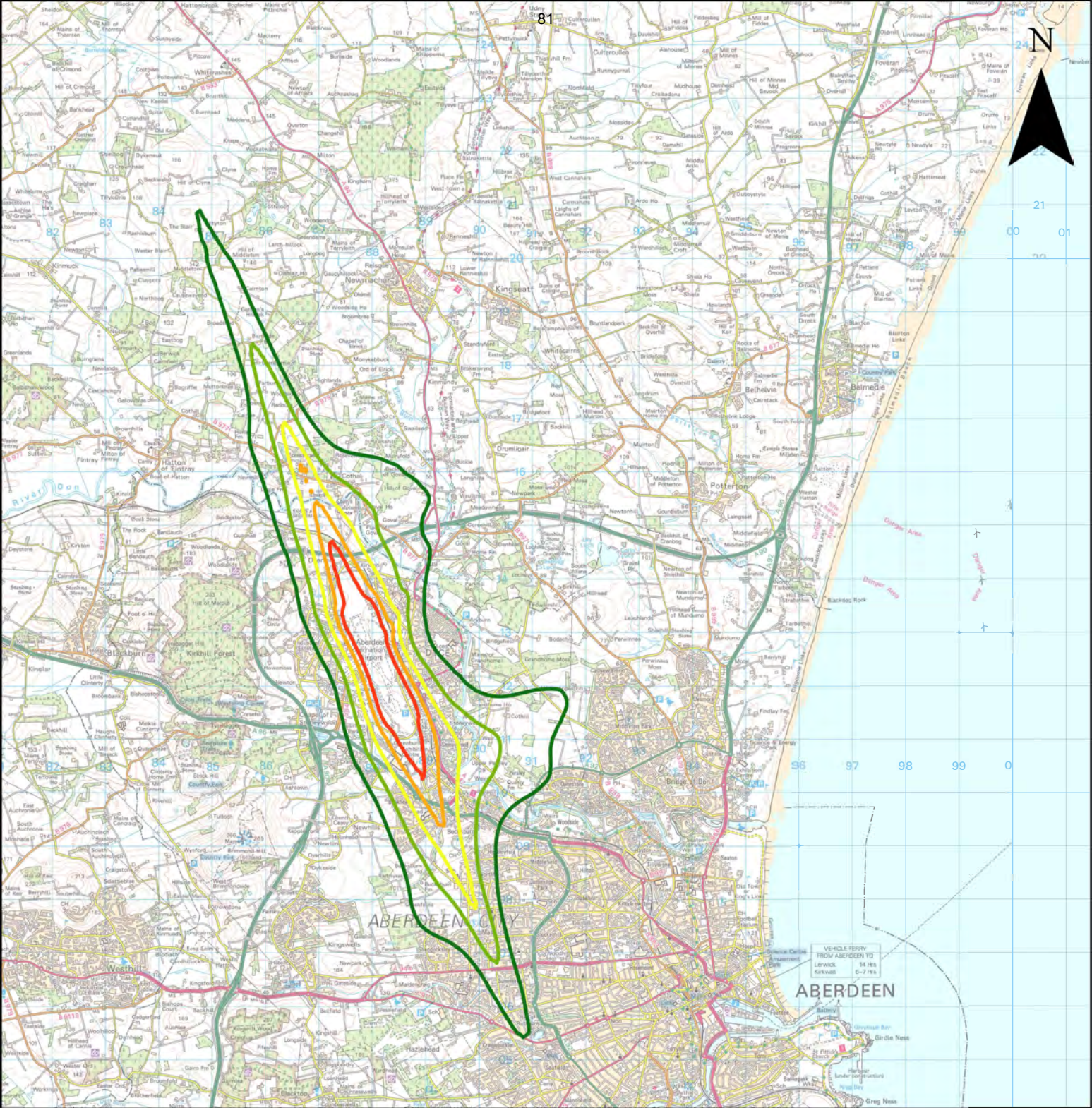


Aberdeen Airport 2026 92-day summer night  $L_{Aeq,8h}$  45-57 dB contours

Year of implementation without airspace change proposal







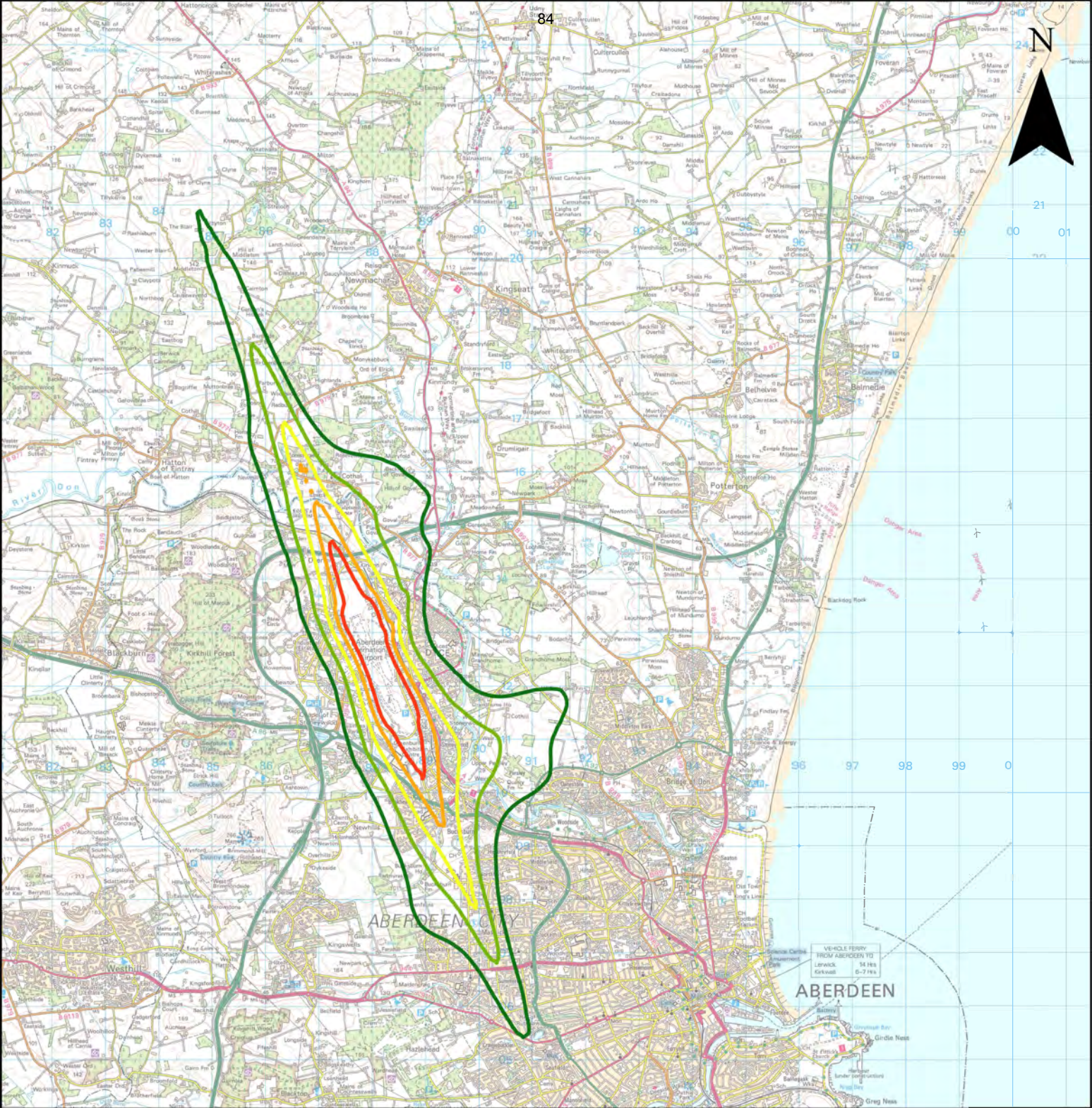
Aberdeen Airport 2026 92-day summer night  $L_{Aeq,8h}$  45-57 dB contours

Year of implementation – Vectors to final approach

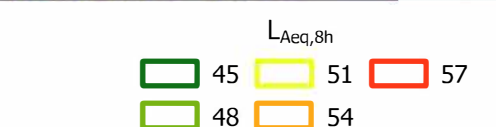


Kilometers

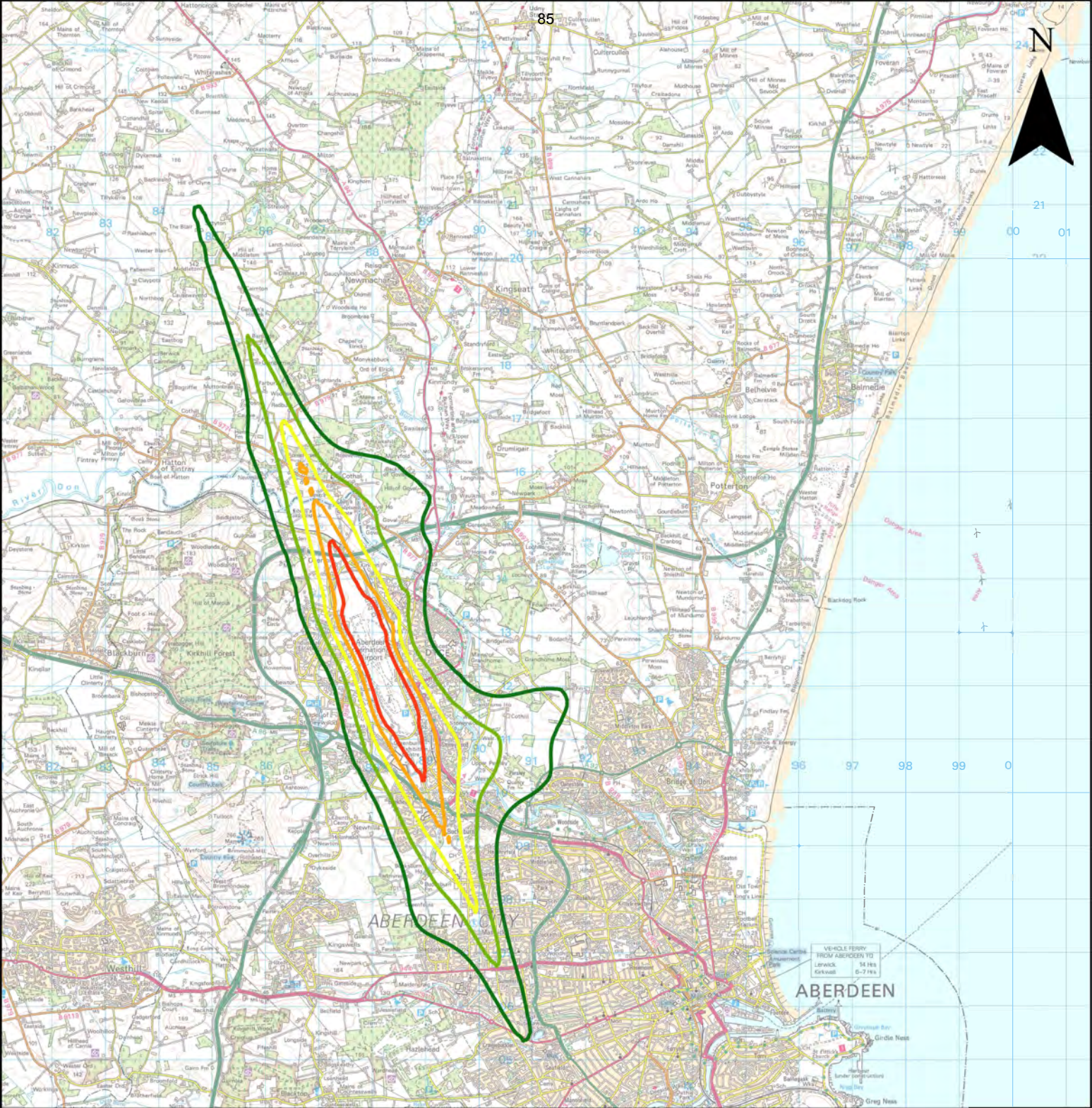




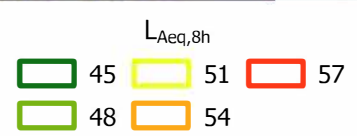
Aberdeen Airport 203592-day summer night  $L_{Aeq,8h}$  45-57 dB contours  
 10 years after implementation without airspace change proposal



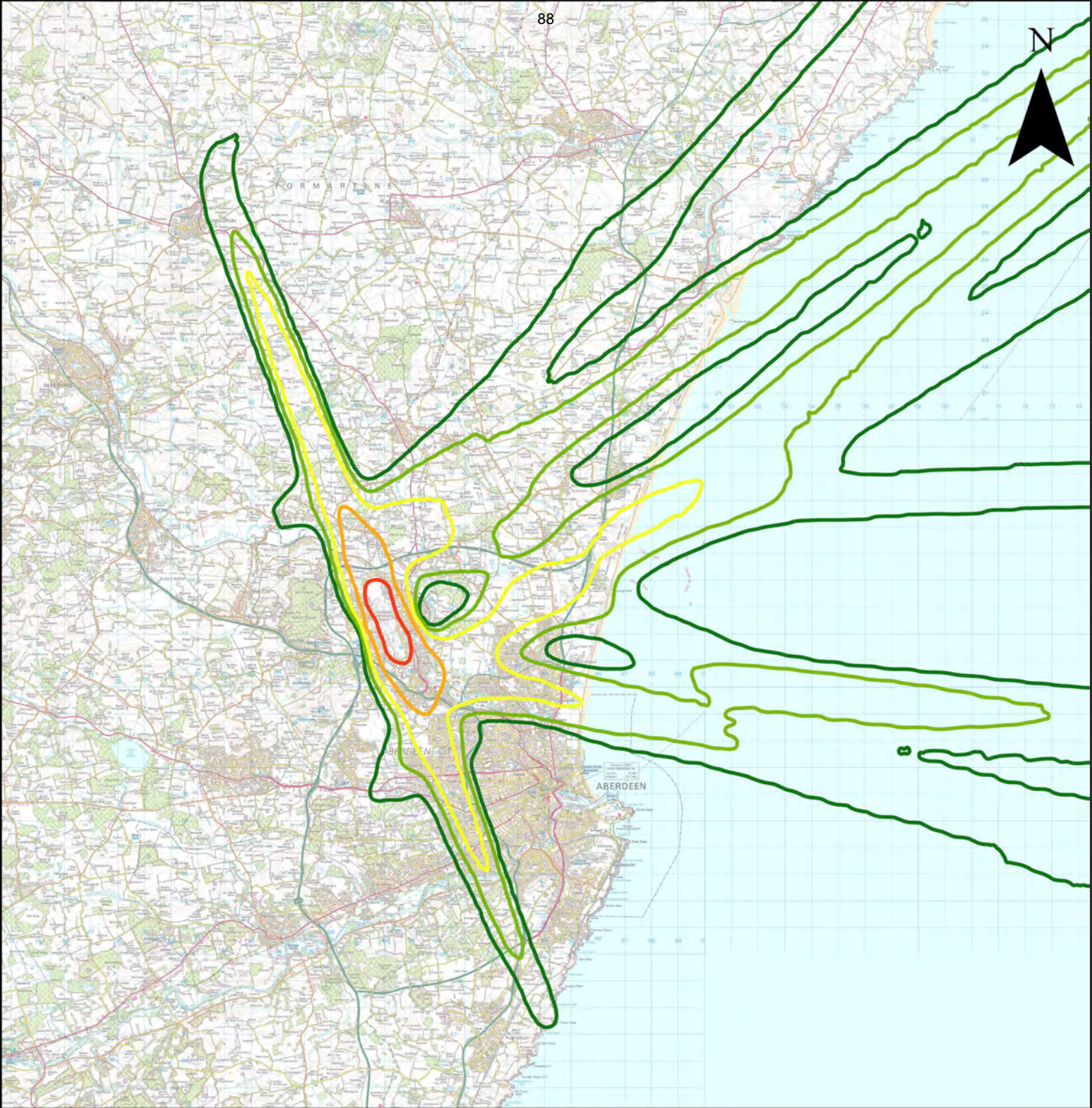




Aberdeen Airport 2035 92-day summer night  $L_{Aeq,8h}$  45-57 dB contours  
 10 Years after implementation – Vectors to final approach







88

N

FORMARTINE

ABERDEEN AIRPORT

ABERDEEN

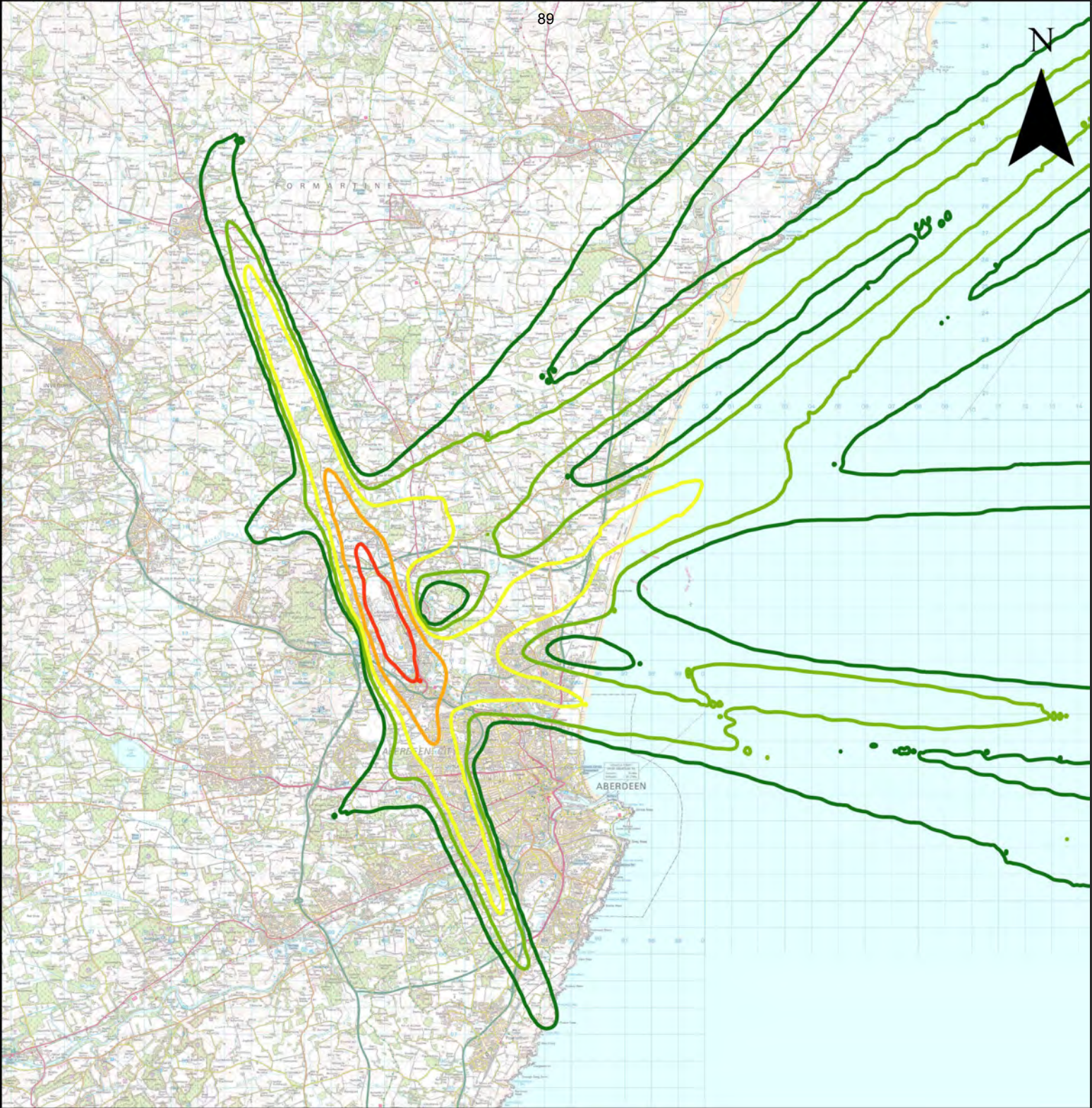
Aberdeen Airport 2022  
92-day summer day N65 5-100 contours  
Current day

N65

- 5
- 10
- 20
- 50
- 100







Aberdeen Airport 2026  
92-day summer day N65 5-100 contours  
Year of implementation without airspace change proposal



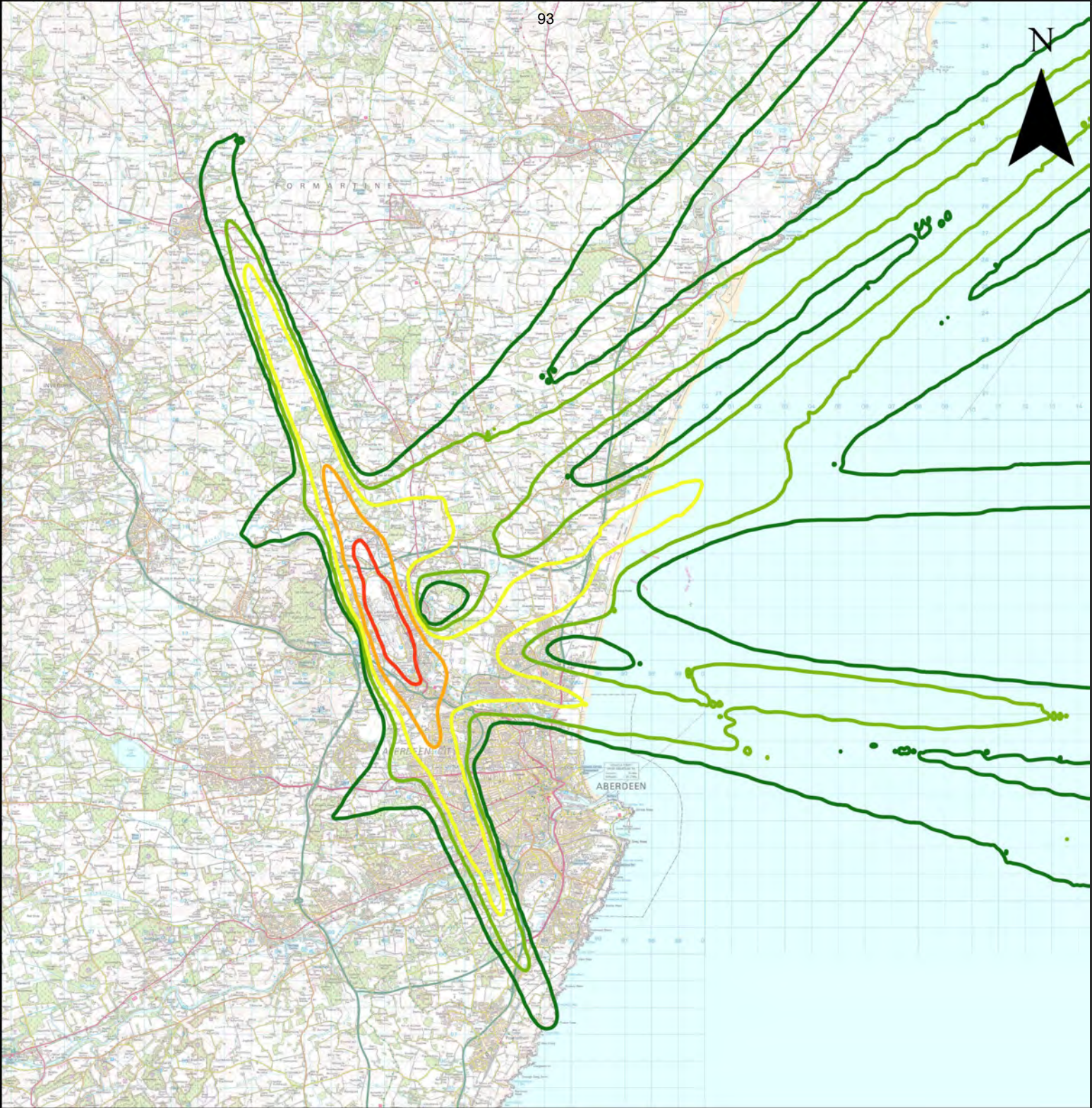




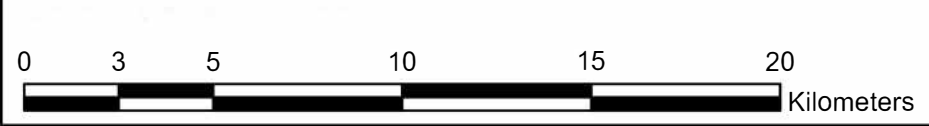
Aberdeen Airport 2026 92-day summer day N65 5-100 contours  
 Year of implementation – Vectors to final approach







Aberdeen Airport 2035 92-day summer day N65 5-100 contours  
10 years after implementation without airspace change proposal



N65

5	20	100
10	50	

© Crown copyright and database rights 2023  
Ordnance Survey 0100031673

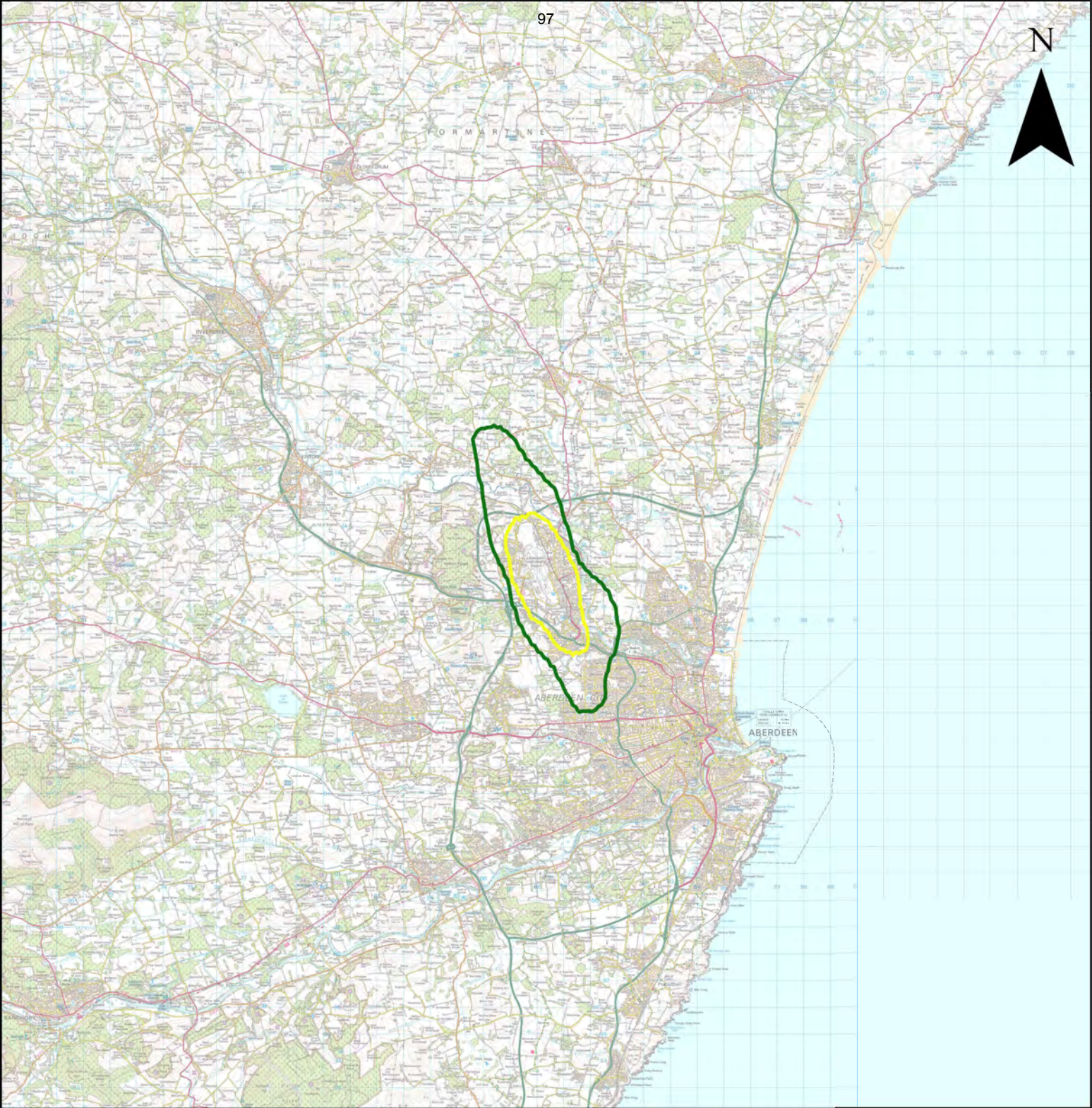




Aberdeen Airport 2035 92-day summer day N65 5-100 contours  
 10 years after implementation – Vectors to final approach







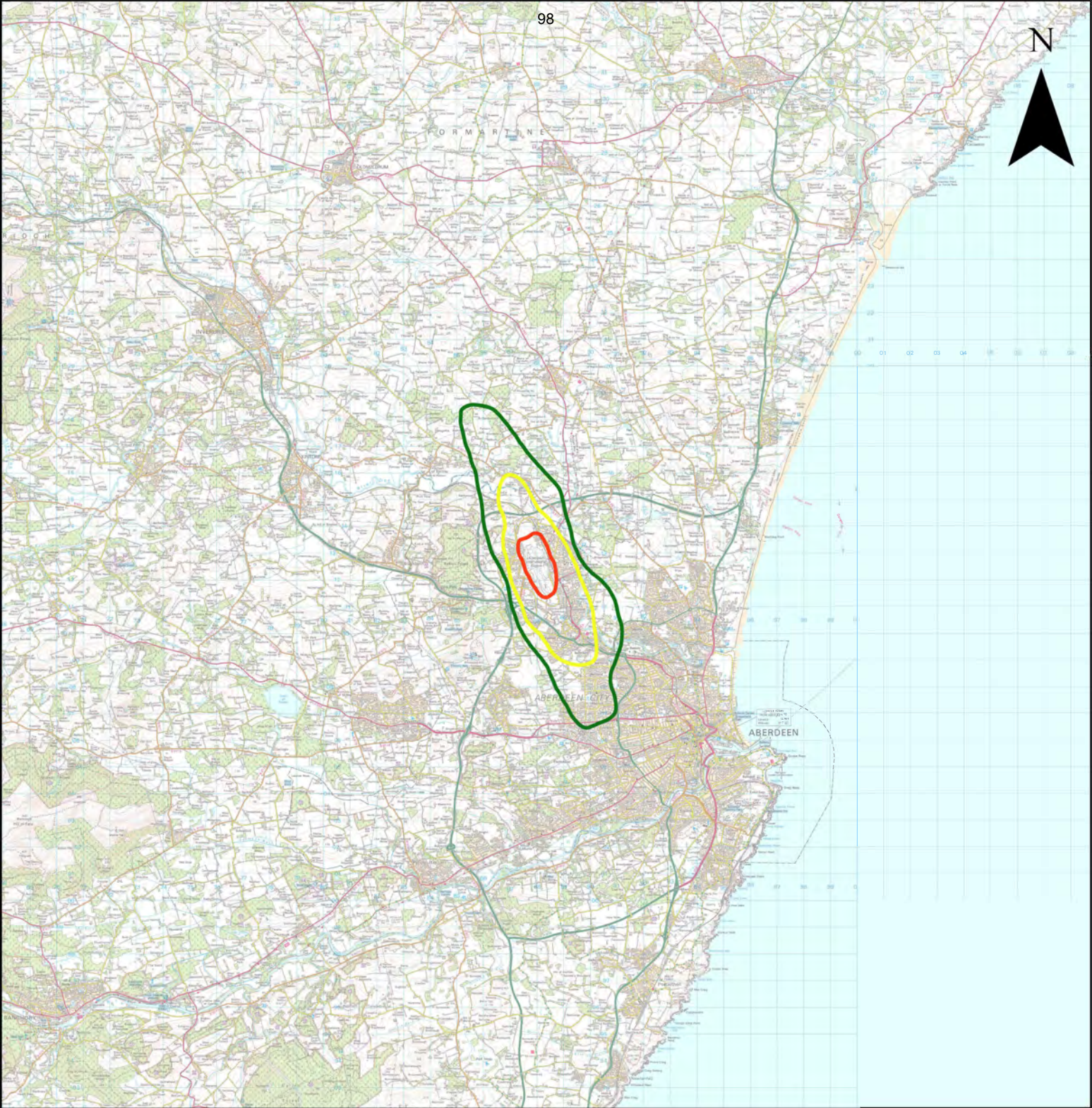
Aberdeen Airport 2022  
92-day summer night N60 5-10 contours  
Current day

N65

5 10







98

N



00 01 02 03 04 05 06

ABERDEEN

Aberdeen Airport 2026 92-day summer night N60 5-20 contours

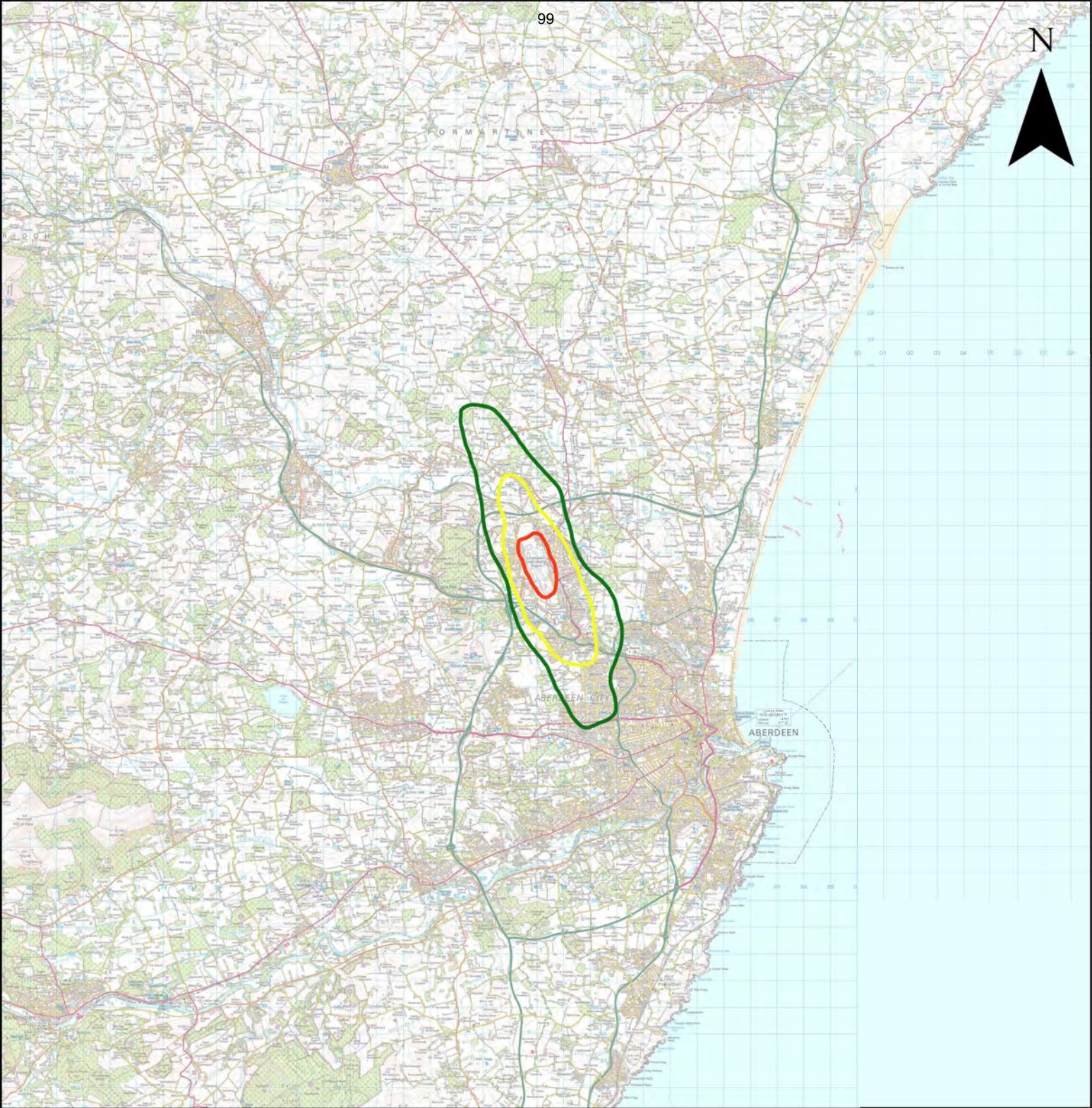
N60

Year of implementation without airspace change proposal

5 10 20







99

N



00 01 02 03 04 05 06

ABERDEEN

Aberdeen Airport 2026 92-day summer night N60 5-20 contours  
 Year of implementation – Vectors to final approach

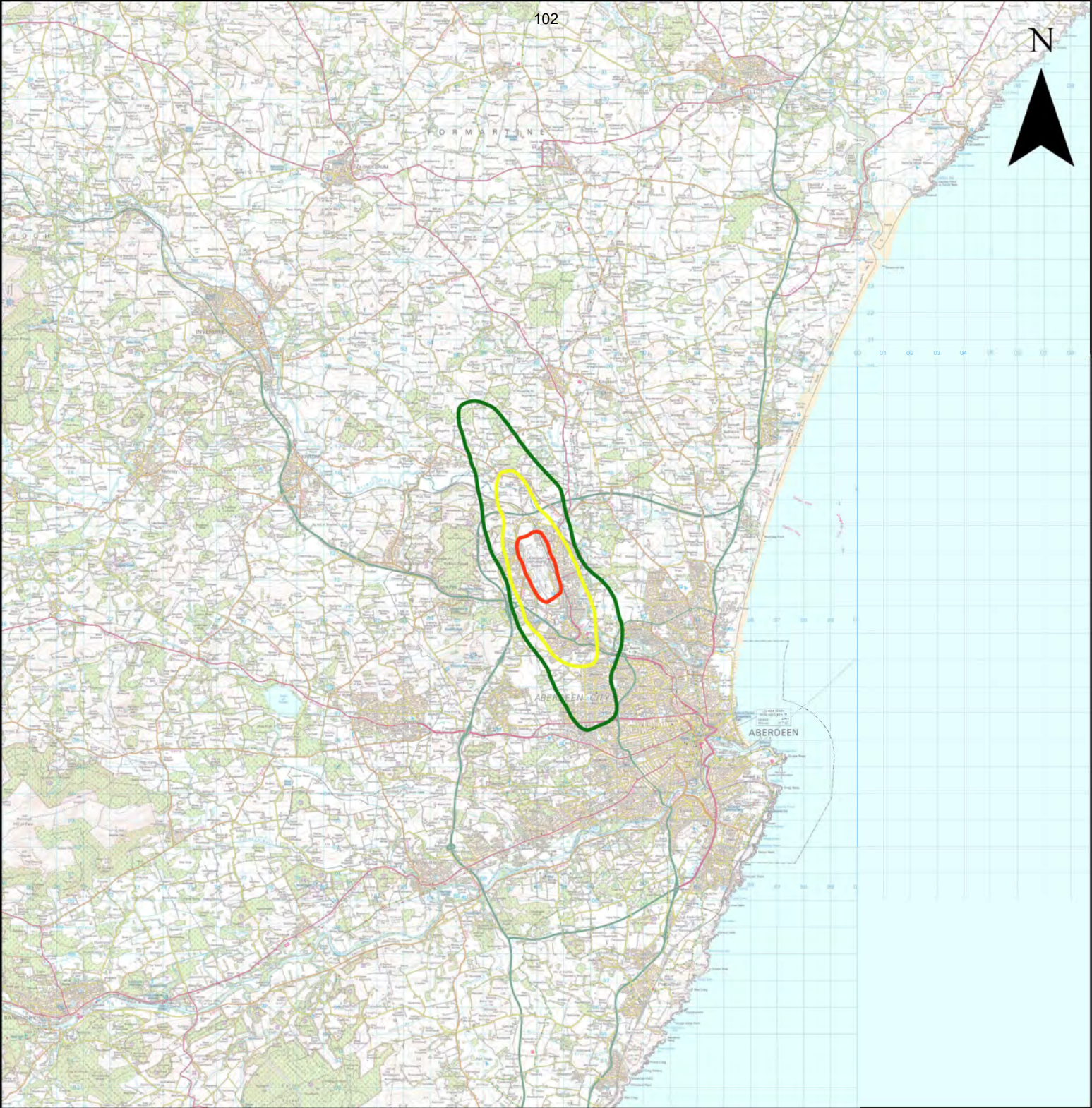
N60

5 10 20

0 3 5 10 15 20 Kilometers

© Crown copyright and database rights 2023  
 Ordnance Survey 0100031673





102

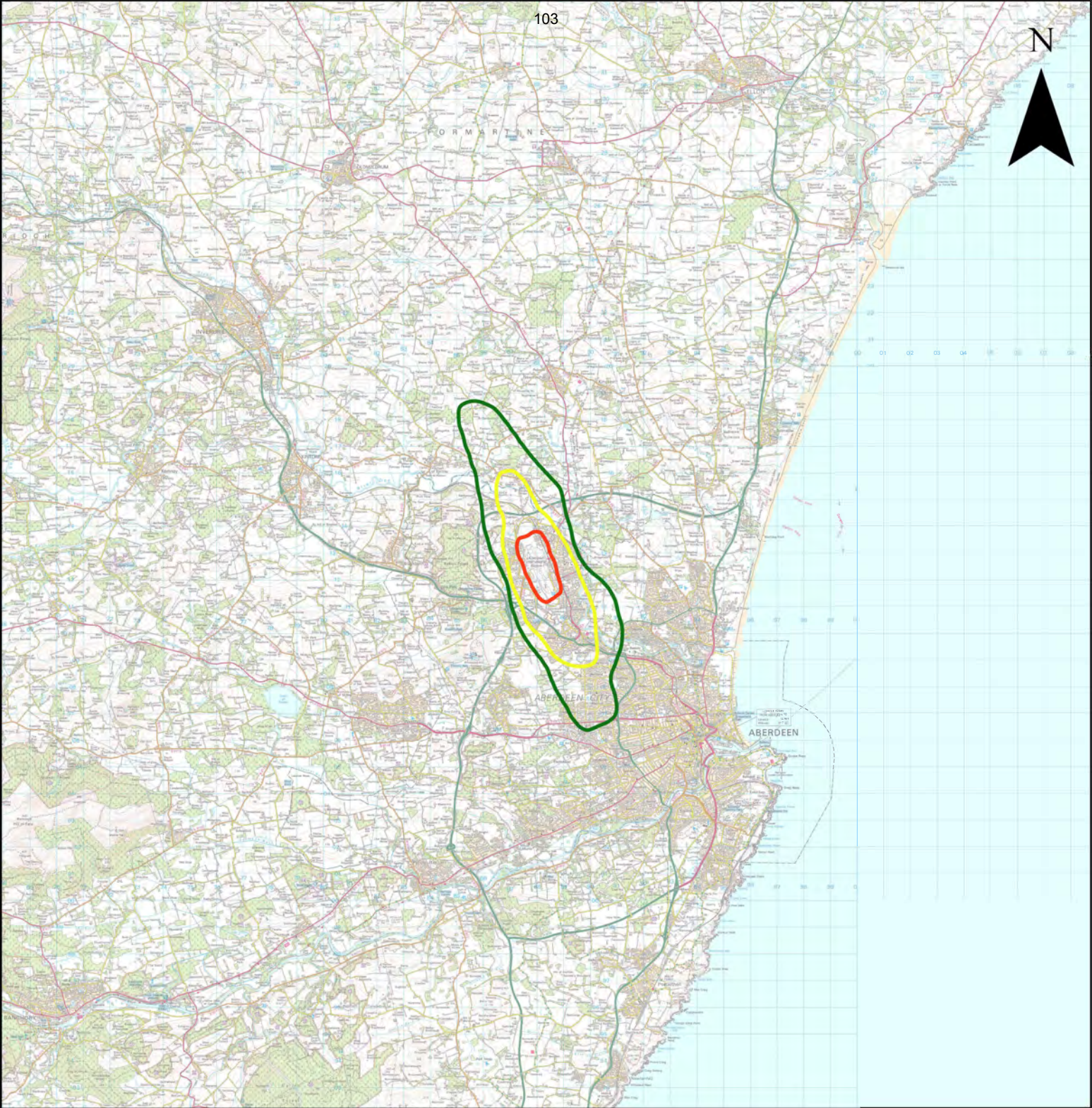


Aberdeen Airport 2035 92-day summer night N60 5-20 contours  
10 years after implementation without airspace change proposal

N60







103

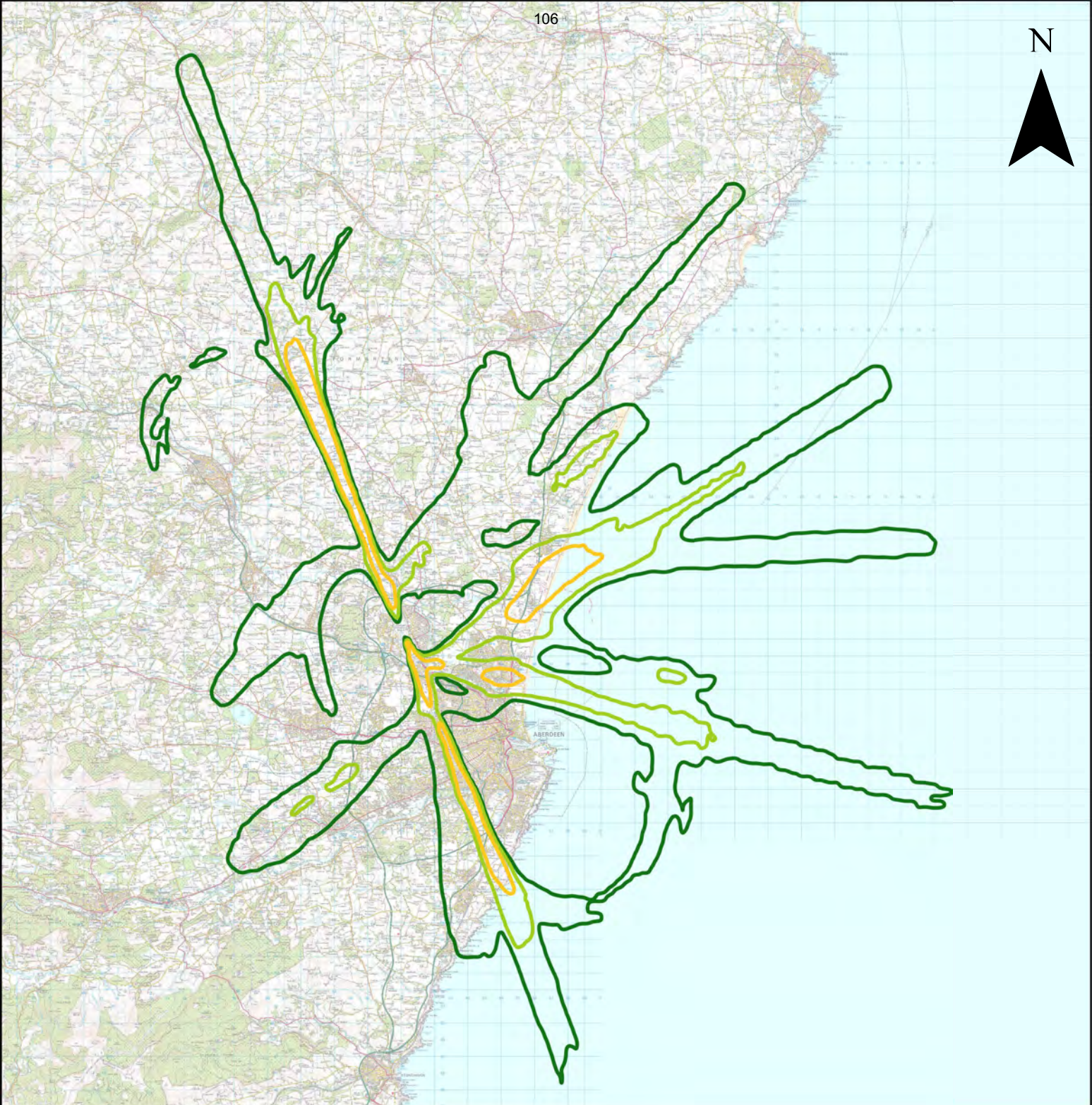


Aberdeen Airport 2035 92-day summer night N60 5-20 contours  
10 years after implementation – Vectors to final approach

N60





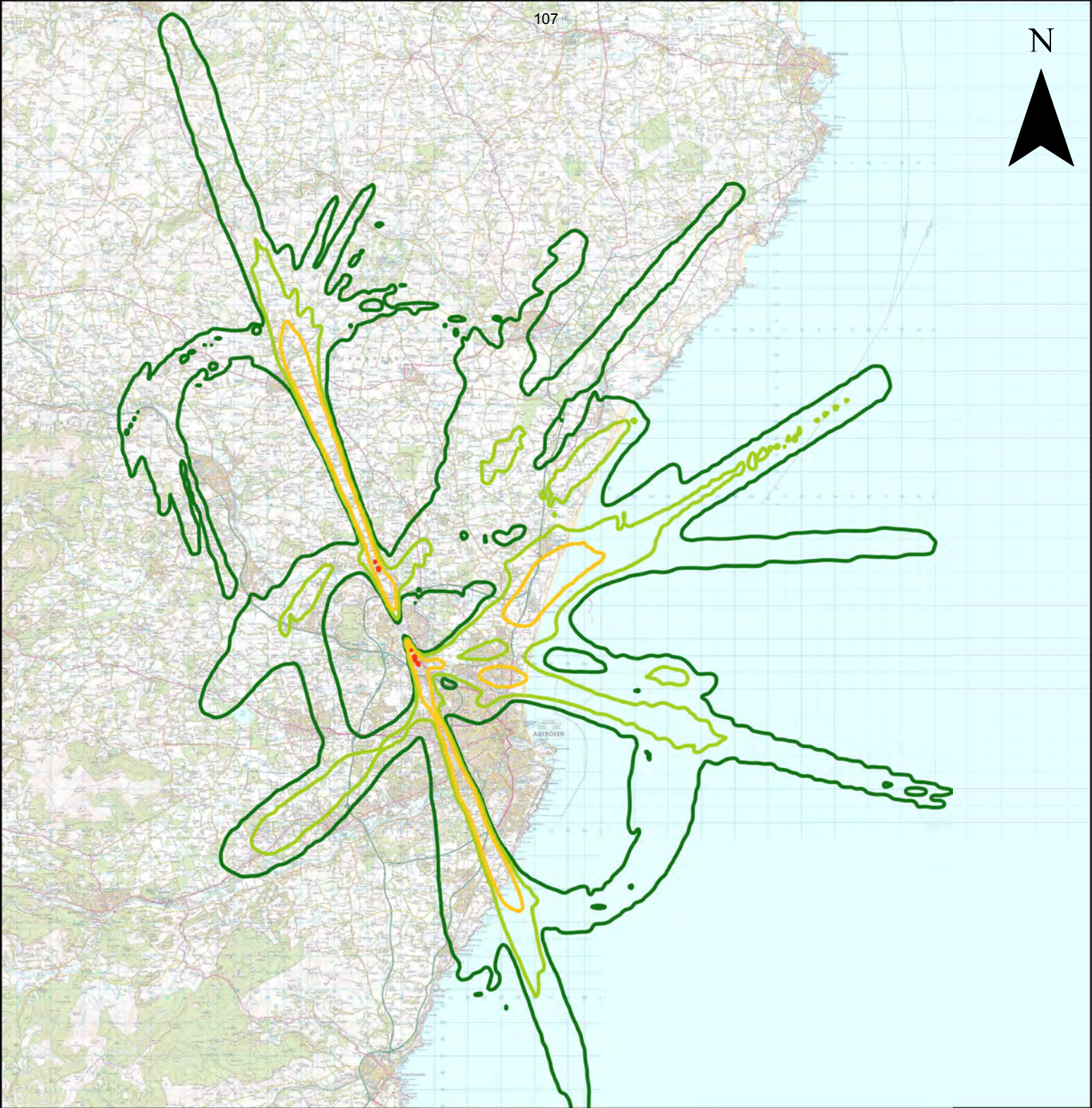


Aberdeen Airport 2022  
 92-day summer overflight 5-20 contours  
 Current day

Average overflights below 7000ft per day







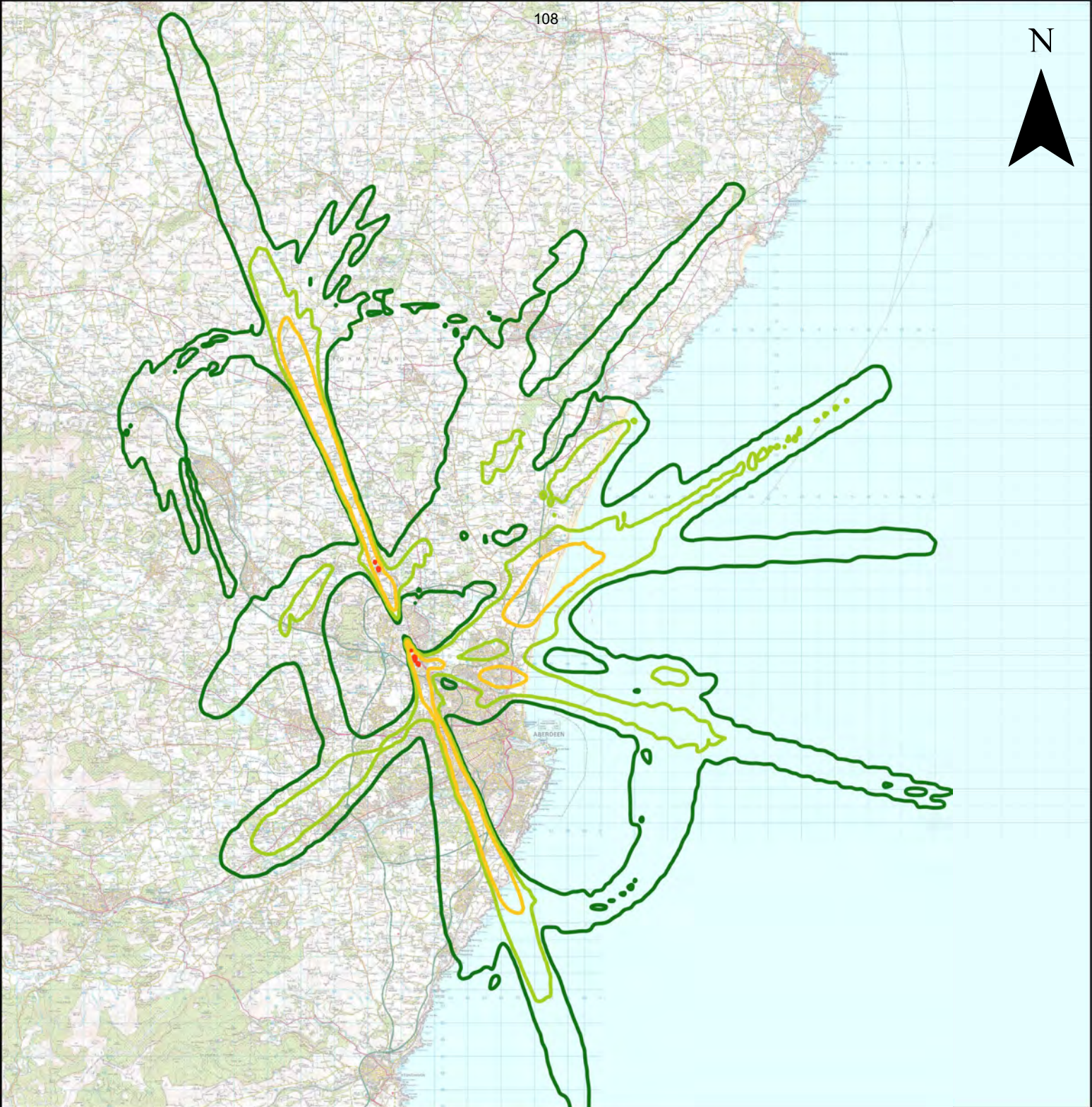
Aberdeen Airport 2026 92-day summer overflight 5-50 contours  
 Year of implementation without airspace change proposal

Average overflights below 7000ft per day

5 10 20 50





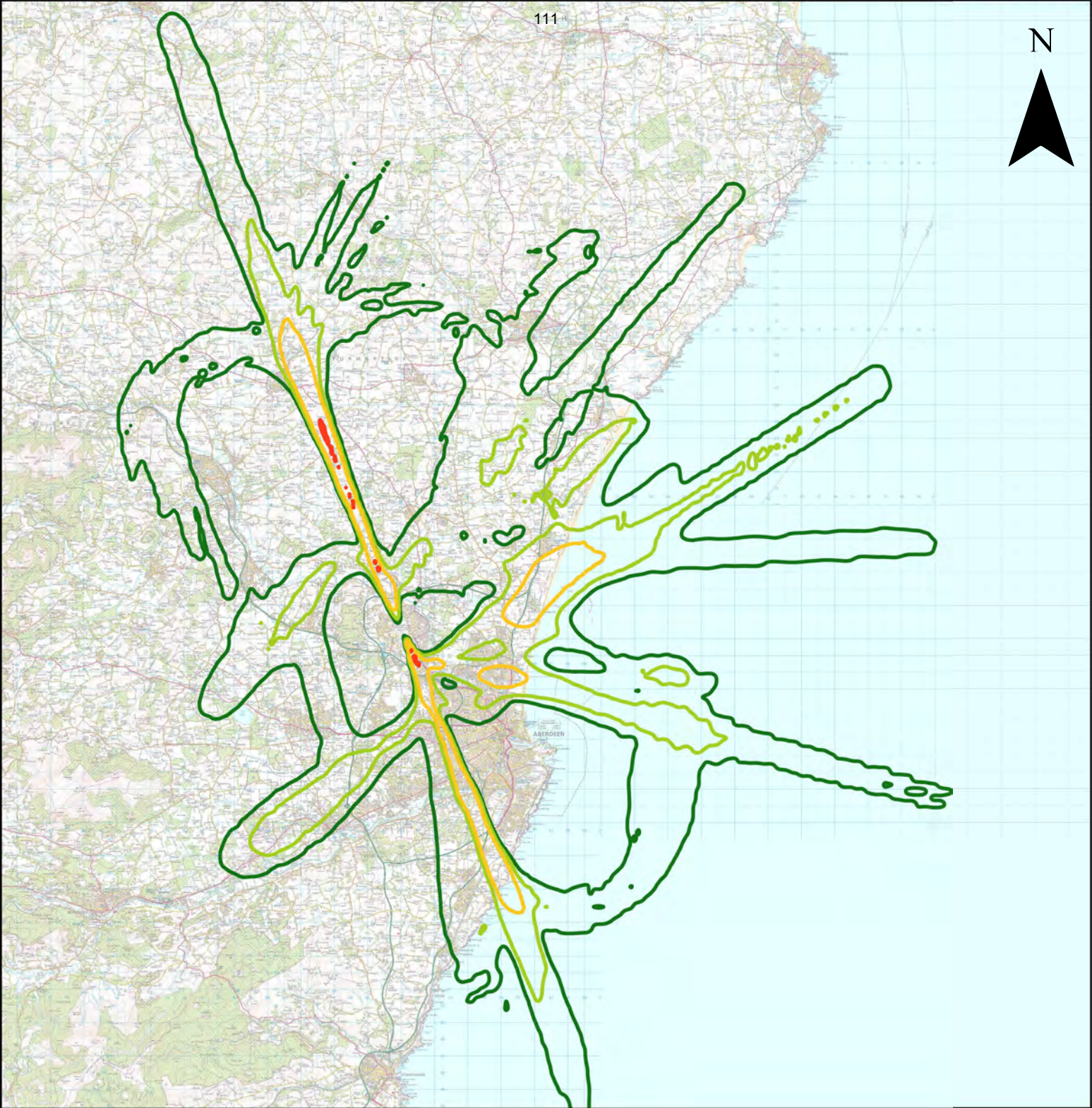


Aberdeen Airport 2026 92-day summer overflight 5-50 contours  
 Year of implementation – Vectors to final approach

Average overflights below 7000ft per day  
 5 10 20 50







Aberdeen Airport 2035 92-day summer overflight 5-20 contours  
10 years after implementation without airspace change  
proposal

Average overflights below 7000ft per day  
5 10 20 50







Aberdeen Airport 2035 92-day summer overflight 5-50 contours  
10 years after implementation – Vectors to final approach

Average overflights below 7000ft per day

